

CONTENTS

Click a title in this table of contents to access the corresponding section

1. HERCULES WIRELESS G AND WINDOWS VISTA	3
1.1. Connecting to a wireless network	3
1.2. Connecting to a Livebox wireless network.....	6
1.3. Disconnecting from a wireless network	10
1.4. Managing your favorite networks	11
2. WELCOME TO THE WIRELESS ATTITUDE!.....	13
2.1. Some requirements.....	13
2.2. Computers running Windows Vista: Sharing folders, a printer or an ADSL connection	13
2.2.1. <i>Enabling sharing</i>	13
2.2.2. <i>Windows Vista: Sharing public or personal folders</i>	16
2.2.3. <i>Computers running Windows Vista: Accessing shared folders</i>	18
2.2.4. <i>Windows Vista: Sharing a printer</i>	18
2.2.5. <i>Computers running Windows Vista : Accessing the shared printer</i>	20
2.2.6. <i>Windows Vista: Sharing an ADSL connection in an <u>Infrastructure</u> type network</i>	22

ENGLISH

FRANÇAIS

DEUTSCH

NEDERLANDS

ITALIANO

ESPAÑOL

1. HERCULES WIRELESS G AND WINDOWS VISTA

The aim of this manual is to help you search for a wireless network, connect to it and set its sharing options, once you have installed an adapter from the **Hercules Wireless G** family on a computer equipped with the **Windows Vista** operating system. While awaiting the impending availability of **WiFi Station** software for Windows Vista, we suggest that you use the **Microsoft Windows Vista automatic configuration utility** to carry out these tasks. Don't hesitate to regularly visit the www.hercules.com website to verify the availability of the latest version of **WiFi Station**, including Windows Vista drivers, and get the most out of all of the functionalities of your Hercules adapter.

1.1. Connecting to a wireless network

Note: The procedure described hereafter is deliberately intuitive and non-exhaustive. If you have mastered Windows Vista, you will note that there are other ways to achieve the same results. You will find our procedure set out in the pages that follow, although you are free to choose your own preferred method.

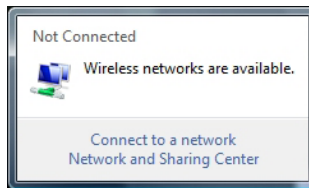
Once your computer is switched on, your WiFi adapter automatically detects the wireless networks available and displays them in a specific window.

To view the detected wireless networks:

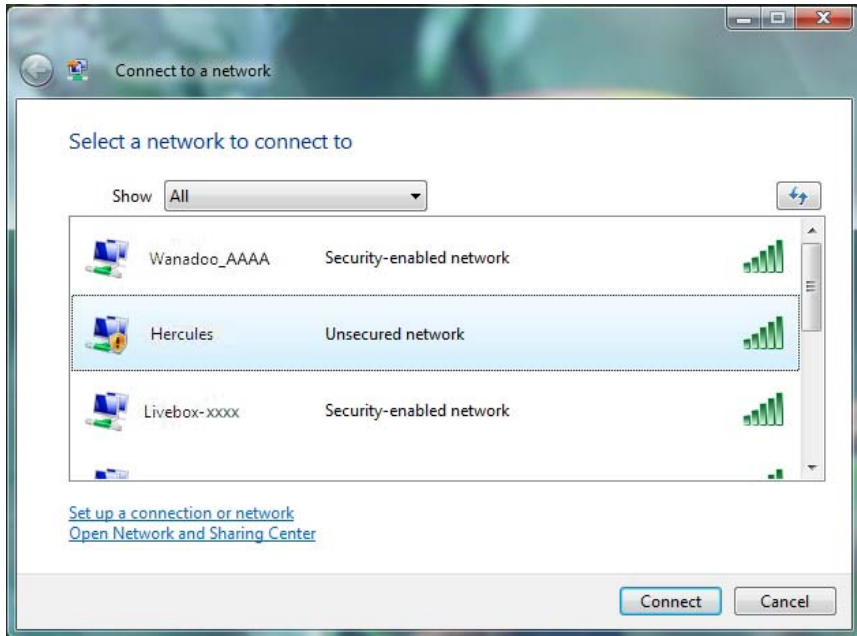
- In the Windows Vista **taskbar**, click the network icon, which includes both wireless and wired networks.



The message **Wireless networks are available** is displayed once your WiFi adapter has detected wireless networks.



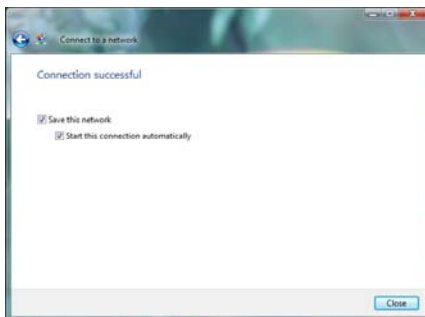
- Click this message to display the list of networks. The **Connect to a network** window appears.



- Browse through the list and select your wireless network (here, the **Hercules** network, highlighted in blue). You will note that this network is unsecured. You will therefore not be asked to provide a key.

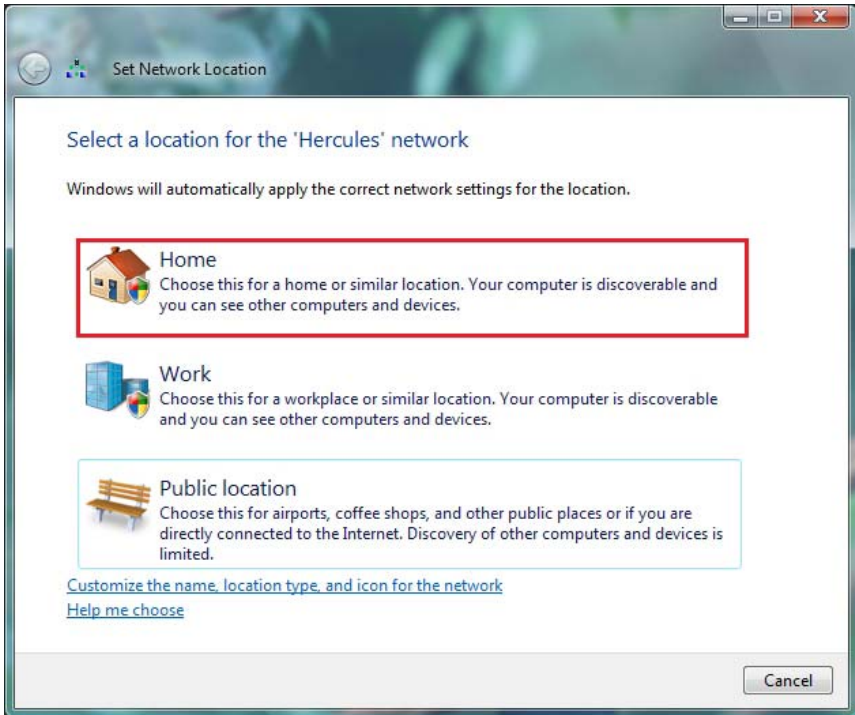
Note: If you select a **security-enabled** network, you must enter the **key** in the window. To do so, you must know the key defined when setting up your wireless network. For information on the different types of keys, please refer to the **Securing your WiFi network using the assistant** chapter in your Hercules Wireless G Modem Router or Hercules Wireless G Router manual, or **The security options** chapter in your WiFi PCI Card / WiFi USB2 Key – For Livebox or Hercules Wireless G PCMCIA / PCI / USB2 manual.

- Click the **Connect** button.



*Wait a few moments. Once the connection to the **Hercules** network has been established, you can save this network in your favorites by ticking the **Save this network** box and **Start this connection automatically**, if you wish. In that case, your computer will always attempt to connect to this network at the start of each new session.*

- Select your **network location**: Home, Work, Public location.



For our purposes, we will consider that you will be using your network at **home**, which will allow you as well as other network users to view the computers present on the network (the “See and be seen” principle, indispensable to be able to share folders, a printer and an ADSL connection).

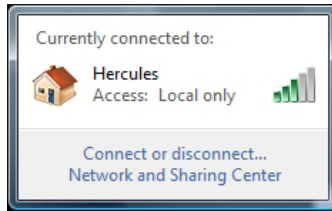
Note: If you prefer to connect to a public hotspot, while you are in a railway station, for example, please refer to the explanations provided by Windows Vista.



Windows Vista may not prompt you to select your network location at this point and select a **public** location for you by default (this will typically be the case if you are already connected to a network). To select another location, you must click the **Customize** link located opposite the name of your network in the **Hercules (public network)** zone of the **Network and Sharing Center**.

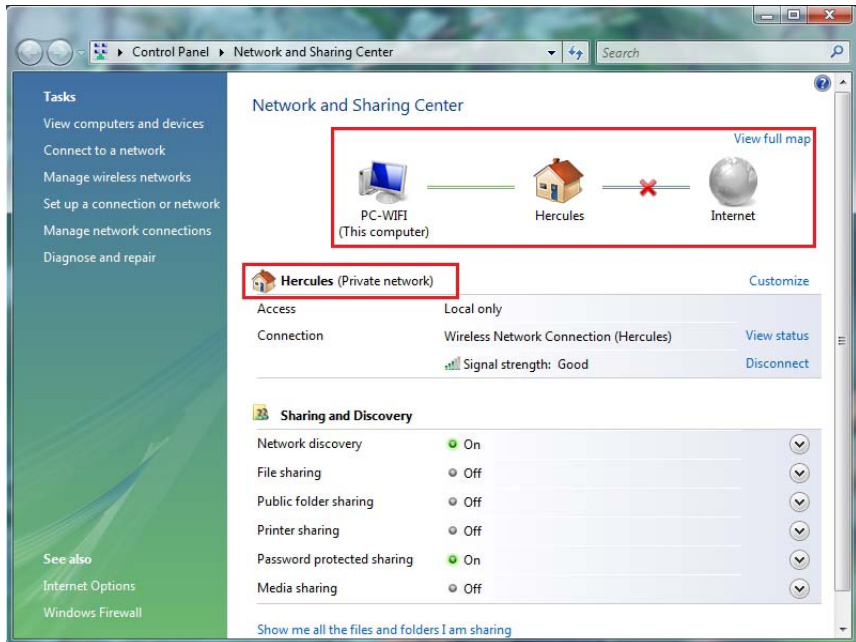
Windows Vista prompts you to confirm your connection choice.

- Click **I confirm the connection request**, then **Continue**.
- Click **Close**.
- In the taskbar, click the network connection icon to verify that you are connected to the **Hercules** network (the message **Currently connected to: Hercules** should be displayed).



- Click the **Hercules** network to access its properties.

The **Network and Sharing Center** appears. In the top part of the window, you will see that your computer called **PC-WIFI** is connected to the **Hercules** network, which is itself connected to the **Internet**.



By default, your computer is part of a **private network** (as opposed to a **public network**). For information on the differences between **private** and **public networks**, please refer to the **Computers running Windows Vista: Sharing folders, a printer or an ADSL connection** section.

1.2. Connecting to a Livebox wireless network

Note: The procedure described hereafter is deliberately intuitive and non-exhaustive. If you have mastered Windows Vista, you will note that there are other ways to achieve the same results. You will find our procedure set out in the pages that follow, although you are free to choose your own preferred method.

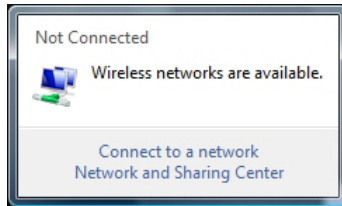
Once your computer is switched on, your WiFi adapter automatically detects the wireless networks available and displays them in a specific window.

To view the detected wireless networks:

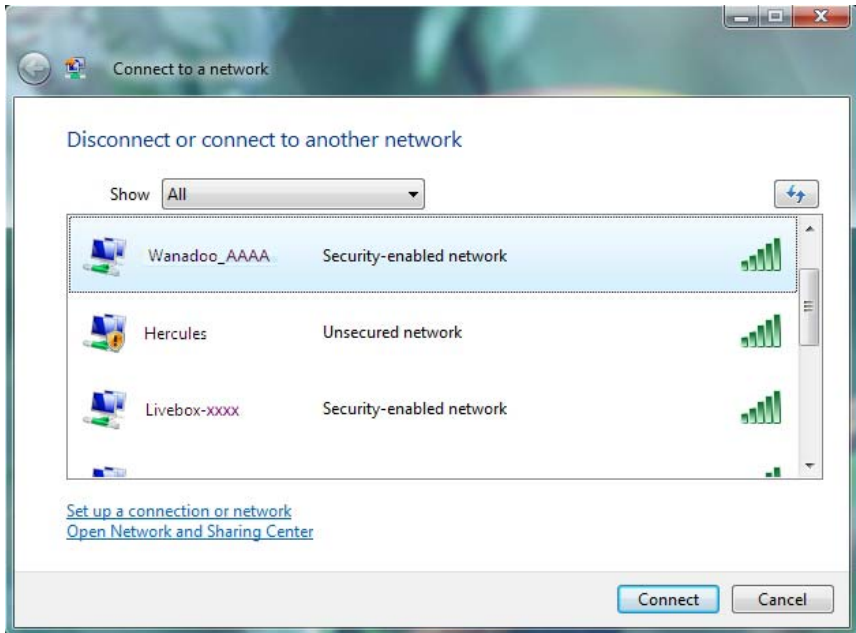
- In the Windows Vista **taskbar**, click the network icon, which includes both wireless and wired networks.



The message **Wireless networks are available** is displayed once your WiFi adapter has detected wireless networks.

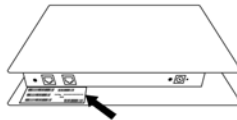


- Click this message to display the list of networks. The **Connect to a network** window appears.

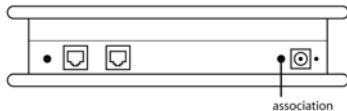


- Browse through the list and select your wireless network (here, the **Wanadoo_AAAA** network, highlighted in blue). You will note that this network is security-enabled. You will therefore be asked to provide a key.

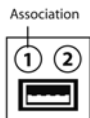
To find out the name of the WiFi network transmitted by your Livebox, please refer to the sticker on the underside of your Livebox unit and make a note of the name found under the term **SSID**.



SAGEM model:



INVENTEL model:

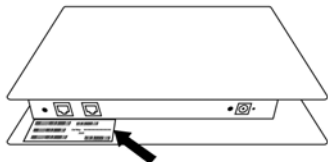


- Step 1: Verify that you have selected the network transmitted by your Livebox.

If this is the first time that you are connecting your PCI Card or your WiFi USB2 Key to your Livebox network, you must switch your Livebox to "Association" mode. To do so, press the **REG** button located on the underside of your Livebox unit next to the power connector (for SAGEM models) or the **Ⓞ** button located at the back of your Livebox unit (INVENTEL models).

The WiFi LED on your Livebox **(W)** flashes throughout the "Association" mode activation period (10 minutes).

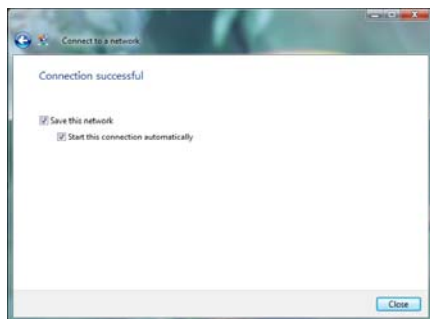
This procedure only has to be carried out once for each WiFi adapter connecting to your Livebox.



- Step 2: Enter the security key for your network if prompted to do so.

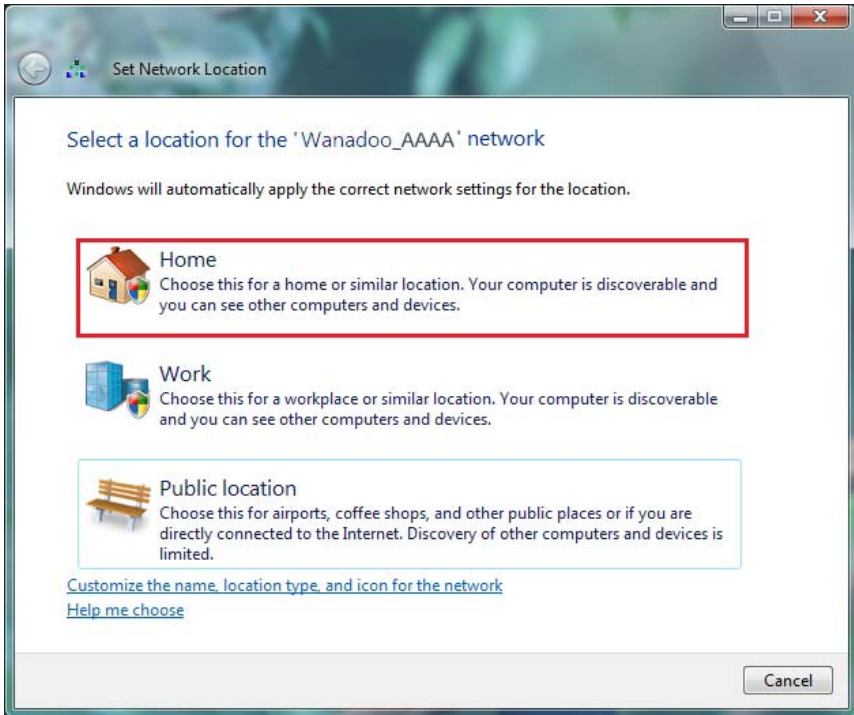
! The WiFi network transmitted by Livebox units is generally security-enabled. To connect to this network, you must know the security key used (generally WEP). The 26 characters that make up the key are found on the sticker found on the underside of your Livebox unit.

- Click the **Connect** button.



*Wait a few moments. Once the connection to the **Wanadoo_AAAA** network has been established, you can save this network in your favorites by ticking the **Save this network** box and **Start this connection automatically**, if you wish. In that case, your computer will always attempt to connect to this network at the start of each new session.*

- Select **your network location**: Home, Work, Public location.



For our purposes, we will consider that you will be using your network at **home**, which will allow you as well as other network users to view the computers present on the network (the “See and be seen” principle, indispensable to be able to share folders, a printer and an ADSL connection).

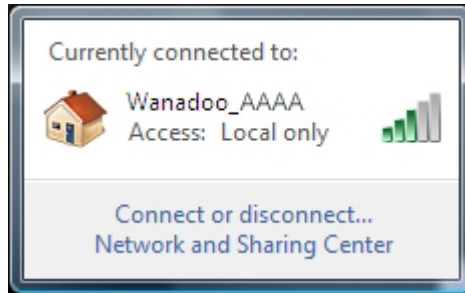
Note: If you prefer to connect to a public hotspot, while you are in a railway station, for example, please refer to the explanations provided by Windows Vista.



Windows Vista may not prompt you to select your network location at this point and select a **public** location for you by default (this will typically be the case if you are already connected to a network). To select another location, you must click the **Customize** link located opposite the name of your network in the **Wanadoo_AAAA (public network)** zone of the **Network and Sharing Center**.

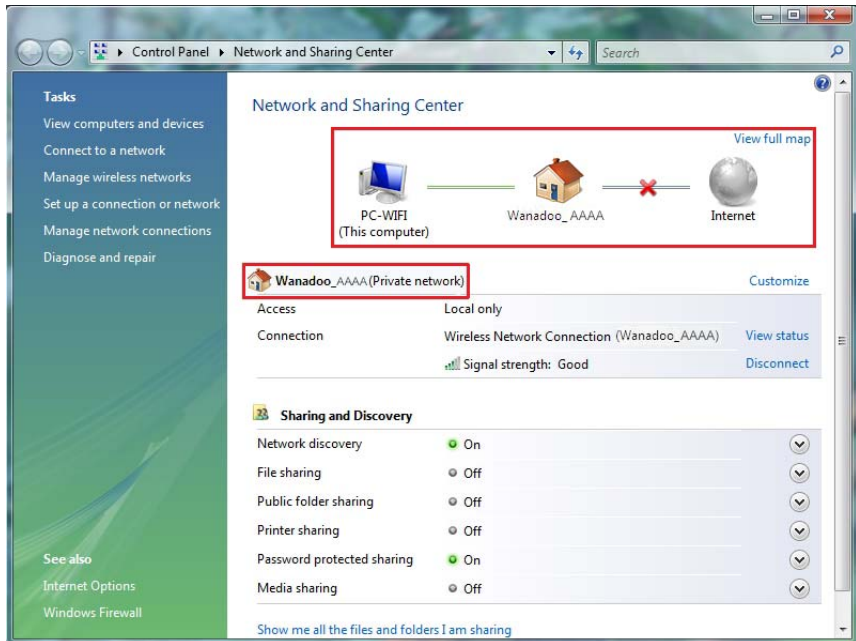
Windows Vista prompts you to confirm your connection choice.

- Click **I confirm the connection request**, then **Continue**.
- Click **Close**.
- In the taskbar, click the network connection icon to verify that you are connected to the **Wanadoo_AAAA** network (the message **Currently connected to: Wanadoo_AAAA** should be displayed).



- Click the **Wanadoo_AAAA** network to access its properties.

The **Network and Sharing Center** appears. In the top part of the window, you will see that your computer called **PC-WIFI** is connected to the **Wanadoo_AAAA** network, which is itself connected to the **Internet**.



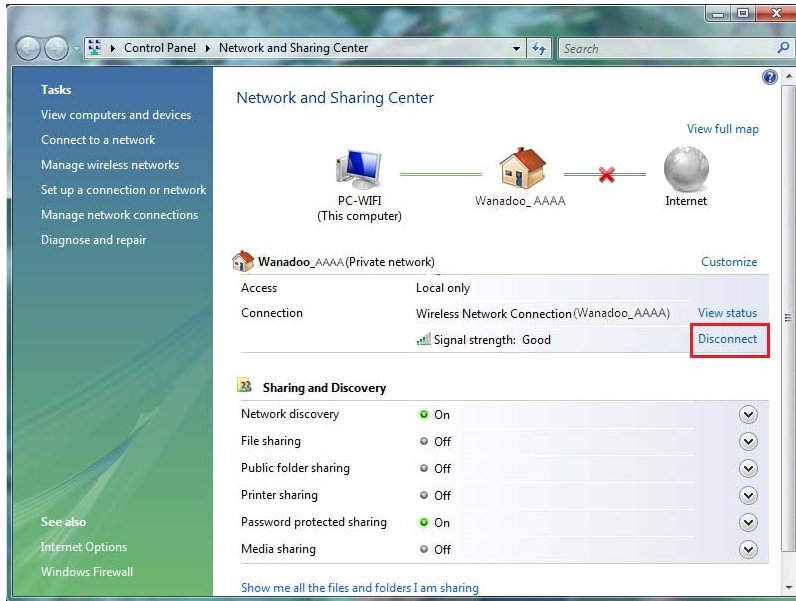
By default, your computer is part of a **private network** (as opposed to a **public network**). For information on the differences between a **public and private network**, please refer to the **Computers running Windows Vista: Sharing folders, a printer or an ADSL connection** section.

1.3. Disconnecting from a wireless network

Once you are connected to a network, you can disconnect via the **Network and Sharing Center**, for example.

Via the **Network and Sharing Center**:

- Click the **Disconnect** link.



Windows Vista disconnects your network.

1.4. Managing your favorite networks

A favorite is a group of settings for connecting to an known Infrastructure or Ad hoc network (your own, a neighbor's, a friend's). The Windows Vista **Network and Sharing Center** allows you to save the settings for a network, or add or remove favorites.

To display your favorite networks, or add or remove a network, click the **Manage wireless networks** link in the **Tasks** zone.



ENGLISH

FRANÇAIS

DEUTSCH

NEDERLANDS

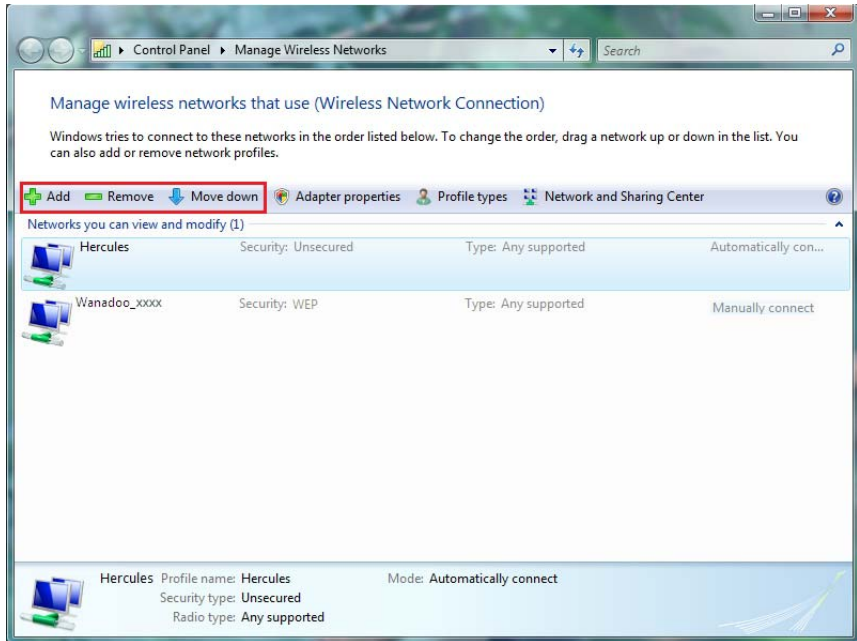
ITALIANO

ESPAÑOL

For example, to remove the Hercules network to which you have just connected, select it in the list (it is then highlighted in blue), then click the **Remove** button.

To add a network, click the **Add** button. Windows Vista launches the manual connection to a wireless network assistant. Follow the on-screen instructions.

Finally, you can change the connection priority by clicking the **Move down** or **Move up** buttons.



2. WELCOME TO THE WIRELESS ATTITUDE!

In the following chapters, we will show you just how user-friendly and easy to use working with a wireless network can be. Sharing your folders, a printer, or letting your friends use your ADSL connection for online gaming are some of the examples that we will show you how to accomplish. Enter the world of wireless and join in the **Wireless Attitude!**

2.1. Some requirements

- Each computer that you wish to put on the network must be equipped with a WiFi adapter.
- To share an ADSL connection, your ADSL modem must be switched on and your ADSL line must be active.
- You must determine in advance whether you are using an **Infrastructure** or **Ad hoc** network. **Reminder:** **Infrastructure** is a type of network with an access point + at least two computers, whereas in **Ad hoc** mode, you have two computers without an access point.
- The wireless network is created on the access point.
- Computers equipped with an earlier operating system than **Windows Vista** must have the same workgroup name.

2.2. Computers running Windows Vista: Sharing folders, a printer or an ADSL connection



To create a network of computers, share data, a printer or an **ADSL** connection between computers running **Windows Vista**, it is not imperative that the computers belong to the same **workgroup**. However, if you wish to share between **Windows Vista** and an earlier operating system, make sure to define the same workgroup on all computers. For information on how to create a workgroup, please refer to the manual of your Hercules product.

Note: The access paths described hereafter may vary slightly if you have modified the default display in Windows Vista (that is to say, the Start menu properties and the Control Panel display).

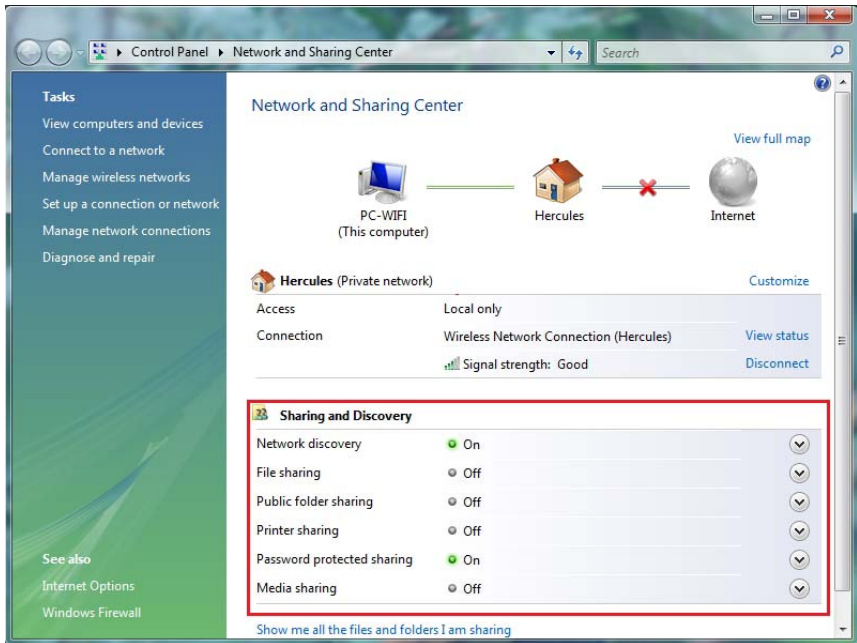
You have connected your computer to a **private network** (as opposed to a **public network**). Therefore, the **discovery** options (namely, the ability to view outside devices and computers and to be seen by other networks) are enabled, but **sharing** options are not. You must therefore enable them manually before you can share your folders, your Internet connection or your printer.

2.2.1. Enabling sharing


Before setting up sharing for your folders, your printer or your Internet connection, you must enable sharing in the **Network and Sharing Center**.

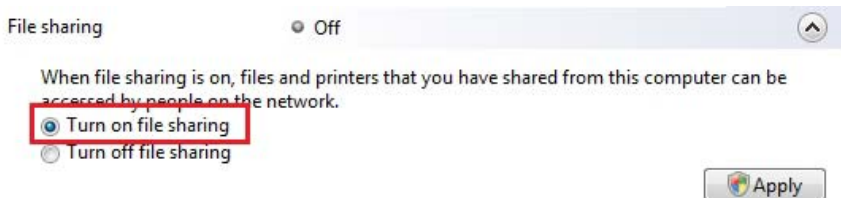


Note: To open the **Network and Sharing Center**, click the network icon in the **Windows taskbar**, then the **Network and Sharing Center** link.



Enabling file sharing


- In the **Sharing and Discovery** zone, click the **Off** link or the  button located opposite **File sharing**.
- Select the **Turn on file sharing** radio button.



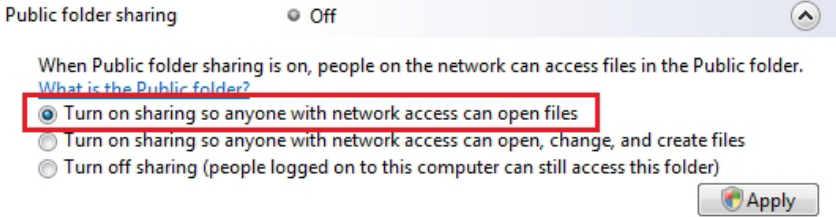
- Click **Apply**. In the Windows Vista confirmation window, click **Continue**.

Enabling public folder sharing

Note: A public folder is a folder which can be shared by other users of the same computer or of the same network.

- In the **Sharing and Discovery** zone, click the **Off** link or the  button located opposite **Public folder sharing**.

- Select the **Turn on sharing so anyone with network access can open files** radio button (they will only be able to consult files) or select **Turn on sharing so anyone with network access can open, change, and create files** (there will be no limitations on the contents of these folders in terms of viewing, making changes and additions or other actions).



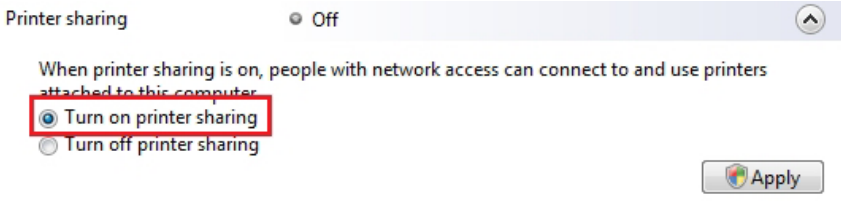
- Click **Apply**. In the Windows Vista confirmation window, click **Continue**.

Enabling printer sharing

Note: To enable printer sharing, you must first have installed a printer.

- In the **Sharing and Discovery** zone, click the **Off** link or the  button located opposite **Printer sharing**.


- Select the **Turn on printer sharing** radio button.



- Click **Apply**. In the Windows Vista confirmation window, click **Continue**.

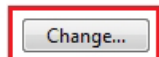
Enabling media file sharing

Note: This option allows you to enable sharing of your music, videos and images.

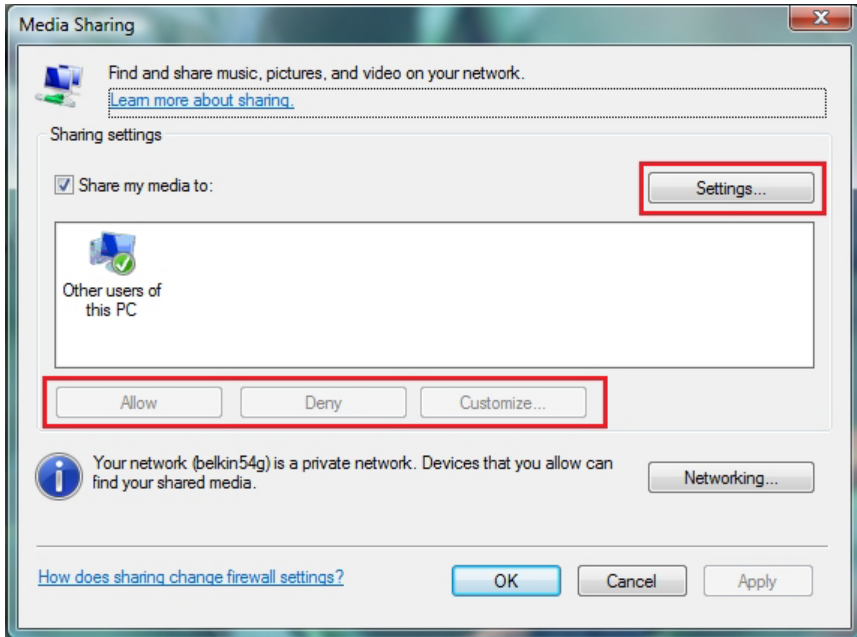
- In the **Sharing and Discovery** zone, click the **Off** link or the  button located opposite **Media sharing**.

- Click **Change...**

When media sharing is on, people and devices on the network can access shared music, pictures, and videos on this computer, and this computer can find those types of shared files on the network.



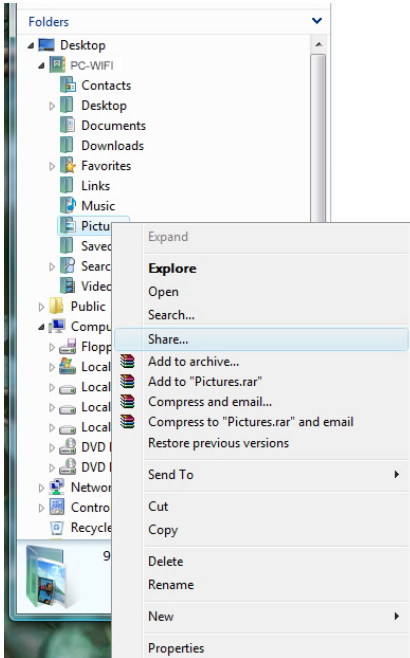
- In the **Media Sharing** window that appears, tick the **Share my media** box.



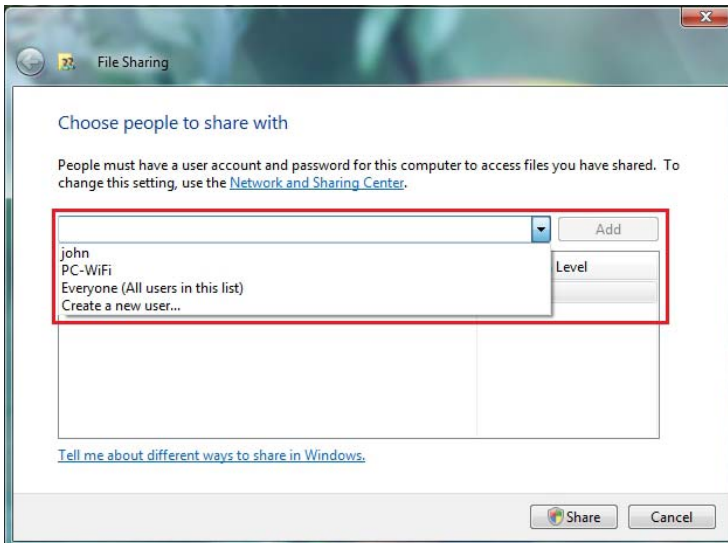
- Click **Apply**. In the Windows Vista confirmation window, click **Continue**.
- In the following window, you can define the different **settings**, such as: authorize or refuse groups of users, set parental controls, select media types to be shared, and so on.
- When you're done, click **Apply**, then **OK**.

2.2.2. Windows Vista: Sharing public or personal folders

Reminder: In Windows Vista, there are two types of folders: **personal or local folders** and **public folders**. A **personal folder** is a folder belonging to a specific user created on the computer, whereas a **public folder** is a folder that can be shared by any other user of the same computer or the same network. In essence, a public folder is shared, and therefore available to everyone for viewing (minimum authorization level). For sharing **personal folders** (your folder of your own images, for example), you must select the users who will be able to access their contents and set the authorization level, as indicated in the following procedure.



1. Select the folder that you wish to share, without opening it. Here, your **Pictures** folder.
2. Right-click the folder. Select **Share**.



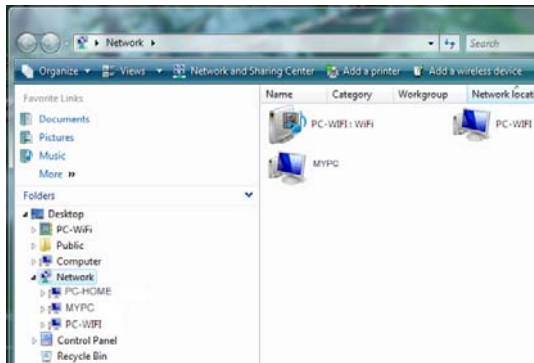
3. In the **File Sharing** window, select the user(s) who will be able to access this folder, then click **Add**.

Note: You can provide access to all users with no restrictions (**Everyone** option) or select specific users previously created on your PC. You can also create new users by clicking **Create a new user...** in the drop-down list.

4. Select the **Permission Level** you wish to assign by clicking on the line for that user: **Reader** (authorization to view only), **Contributor** (authorization to view, add and delete) or **Co-owner** (authorization to view, modify, add and delete).
5. Click **Share**. Be sure to note the path indicated, which will allow for access to the shared folder on the network from another computer. For example: **\\PC-WIFI\Users\My documents\Shared Pictures Folders**.
6. Click **Done**.

The folder is now shared. You can now display all shared folders and files on the computer or the shared files on the network by clicking the links in the **Network and Sharing Center**.

2.2.3. Computers running Windows Vista: Accessing shared folders



1. In the file explorer, accessible via **Start/Computer**, double-click **Network**.

You access the list of the computers on the same network. Use the path indicated by Windows when setting up sharing (for example: **\\PC-WIFI\Users\My documents\Shared Pictures Folders**).

2. Double-click the computer sharing the folders you wish to access.
3. If a password has been defined, enter your **user name** and your **password**.

All shared folders appear. Depending on your authorization level, you can display, modify, add and/or delete shared folders and files.

2.2.4. Windows Vista: Sharing a printer

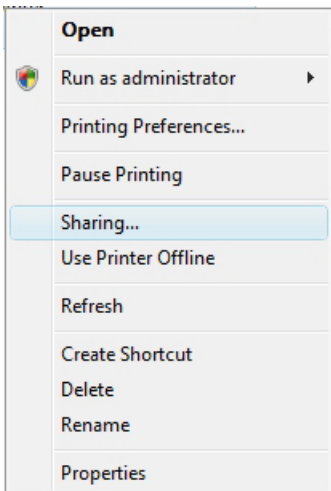
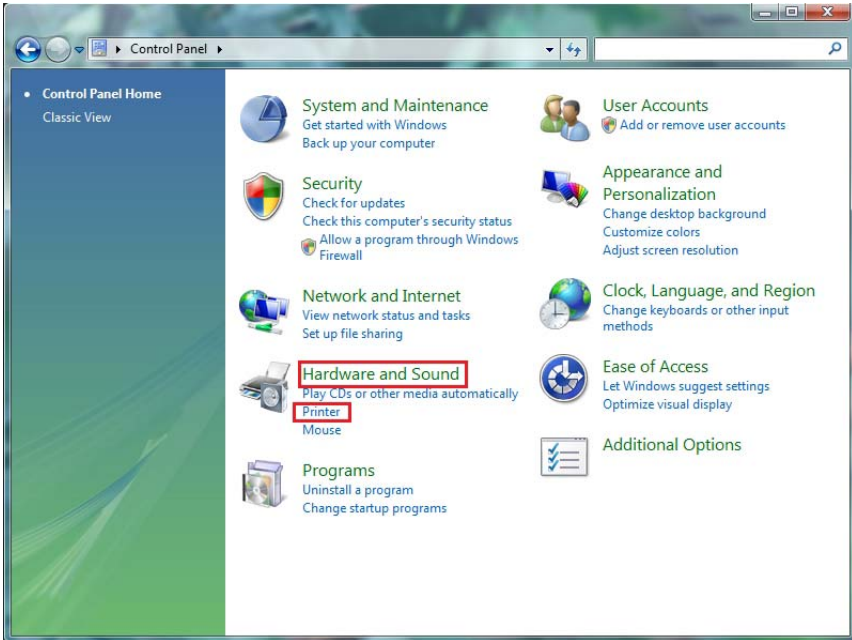
You can put a printer on the network and thereby share it with all computers in your home equipped with a WiFi adapter.



To access a printer on the network, sharing for the printer must first be set up in the **Network and Sharing Center** (please refer to chapter 2.2.1 **Enabling sharing**). The printer must then be set up for sharing on the computer to which is connected and on which it is installed.

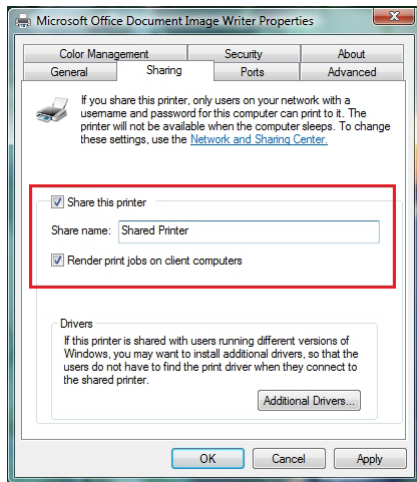
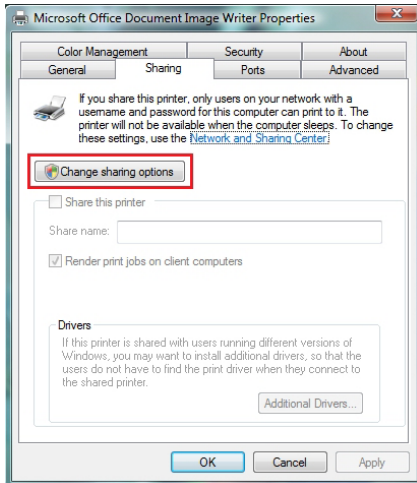
On the computer connected to the printer:

1. Click **Start/Control Panel**.
2. Under the **Hardware and Sound** heading, click the **Printer** link.



The list of installed printers is displayed.

3. Right-click the printer and select the **Sharing...** option.

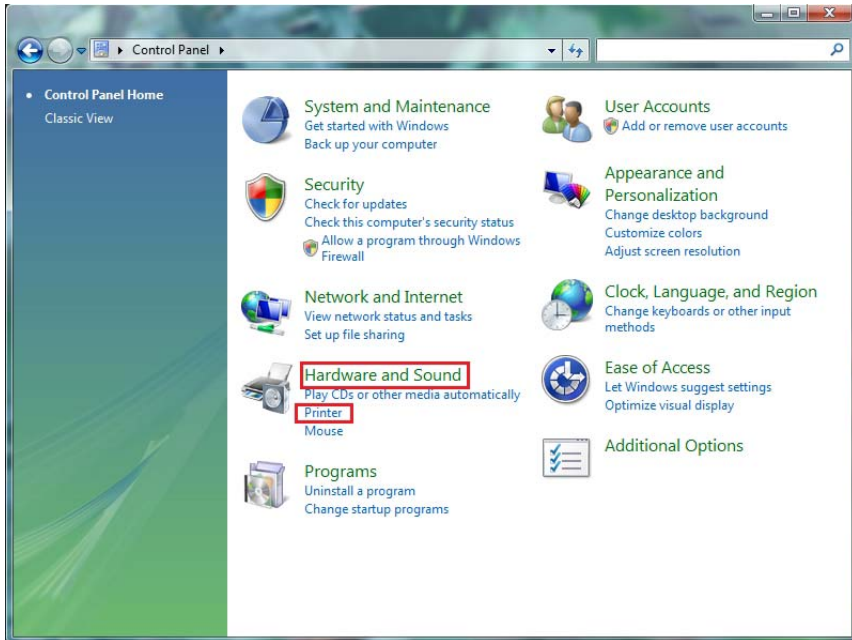


4. In the **Printer Properties** window, click the **Change sharing options** button.
5. In the Windows Vista confirmation window, click **Continue**.
6. Tick the **Share this printer** box.
7. Select the name of the printer which will be displayed on the network under **Share name**.
8. Click **Apply**, then **OK**.

2.2.5. Computers running Windows Vista : Accessing the shared printer

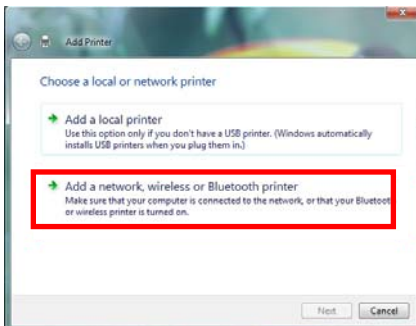
On the computers that will use the shared printer:

1. Click **Start/Control Panel**.
2. Under the **Hardware and Sound** heading, click the **Printer** link.

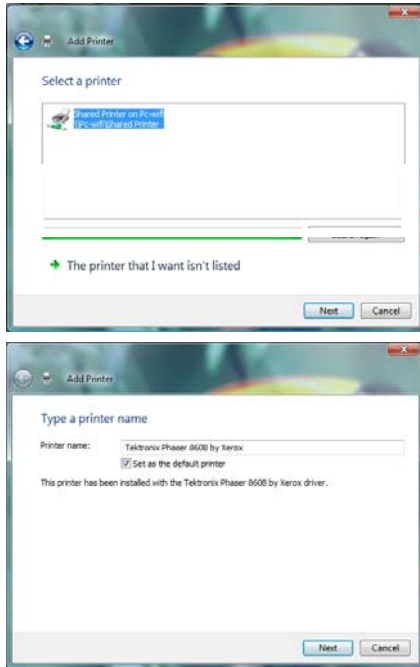


3. Click the **Add a printer** button.

The Add a printer assistant appears.



4. Click **Add a network, wireless or Bluetooth printer**.

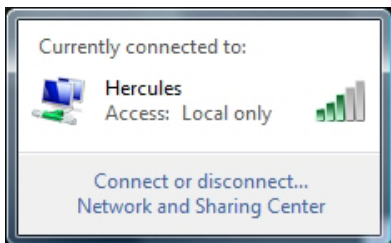


5. Windows searches for the shared printers on your network. Select the shared printer.
6. Click **Next**.
7. If required, accept installation of the printer's drivers when you are being prompted by Windows.
8. Validate the name of your printer, then click **Next**.
9. Click **Finish** to close the assistant.

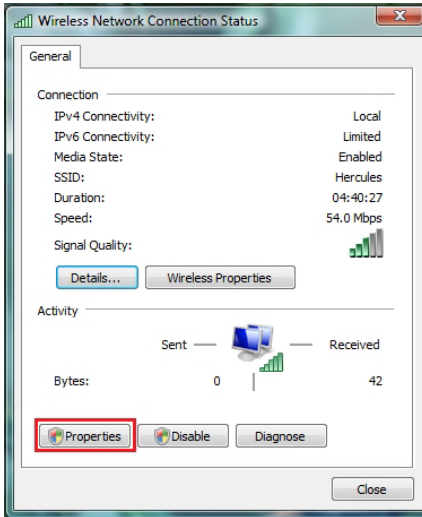
2.2.6. Windows Vista: Sharing an ADSL connection in an Infrastructure type network

Reminder: If you have a Livebox, a modem router or a router connected to a modem and one or more computers, your network will be in **Infrastructure mode** by default. In this mode, the WiFi adapters are connected to your **access point**, which might be your Livebox, your Hercules Modem Router or your Hercules Router connected to a modem. **Infrastructure mode** is ideal for exchanging data, playing online, and also for sharing an Internet connection and/or printer among several computers. Follow the instructions below to finally free yourself from the cable that connects you to your modem... without cutting the links to your ADSL connection. Viva the Wireless Attitude!

Proceed as follows for each computer that will use the shared Internet connection:



1. Connect to your wireless network (Hercules or Livebox_####, for example).
2. Access the **Network and Sharing Center**. To do so, click the network icon on the Windows taskbar, then click the **Network and Sharing Center** link.
3. Click the **View status link**.

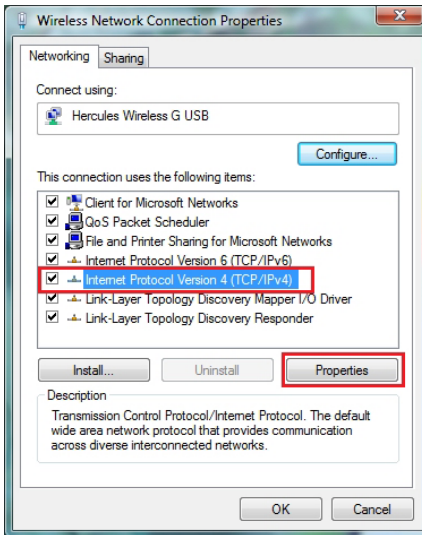


4. In the **Wireless Network Connection Status** window, click **Properties**.

5. In the Windows Vista confirmation window, click **Continue**.

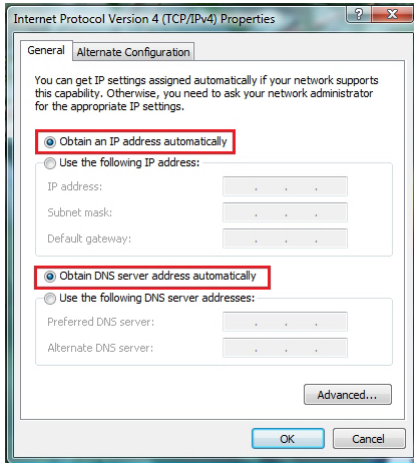
6. In the **Wireless Network Connection Properties** tab, select **Internet Protocol version 4 (TCP/IPv4)**.

7. Click **Properties**.



8. In the **Wireless Network Connection Properties** tab, select **Internet Protocol version 4 (TCP/IPv4)**.

9. Click **Properties**.



10. In the **Internet Protocol version 4 (TCP/IPv4)** window, select **Obtain an IP address automatically** and **Obtain DNS server address automatically**.

11. Click **OK** to validate.

12. Do the same for **Internet Protocol version 6 (TCP/IPv6)**.

To access the Internet, simply launch your Internet browser.

Copyright

Hercules® is a registered trademark of Guillemot Corporation S.A. Intel® and Pentium® are registered trademarks of Intel Corporation. Microsoft® Windows® 98, Millennium,2000,XP and Vista are trademarks or registered trademarks of Microsoft Corporation in the United States and/or other countries. All other trademarks and brand names are hereby acknowledged and are property of their respective owners. Illustrations not binding. Contents, designs and specifications are subject to change without notice and may vary from one country to another.