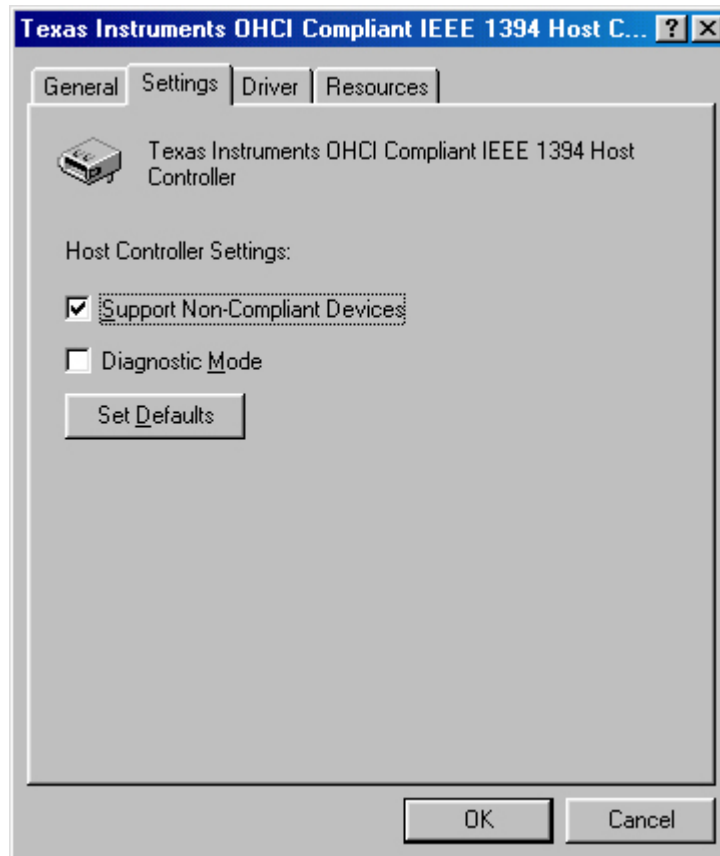


## My camcorder is connected to the board but has not been detected.

If your camcorder has not been detected, enable the board to support non-compliant devices by following the procedure below:

- Click on Start/Settings/Control Panel.
- Double-click on the System icon.
- Select the Device Manager tab.
- Click on the + symbol next to 1394 bus controller.
- Select Texas Instruments OHCI Compliant IEEE 1394 Host Controller and click on Properties.



- Select the Settings tab.
- Enable Support Non-Compliant Devices.

Note: this procedure will not have any undesirable effects on the operation of your camcorder or any other connected devices.