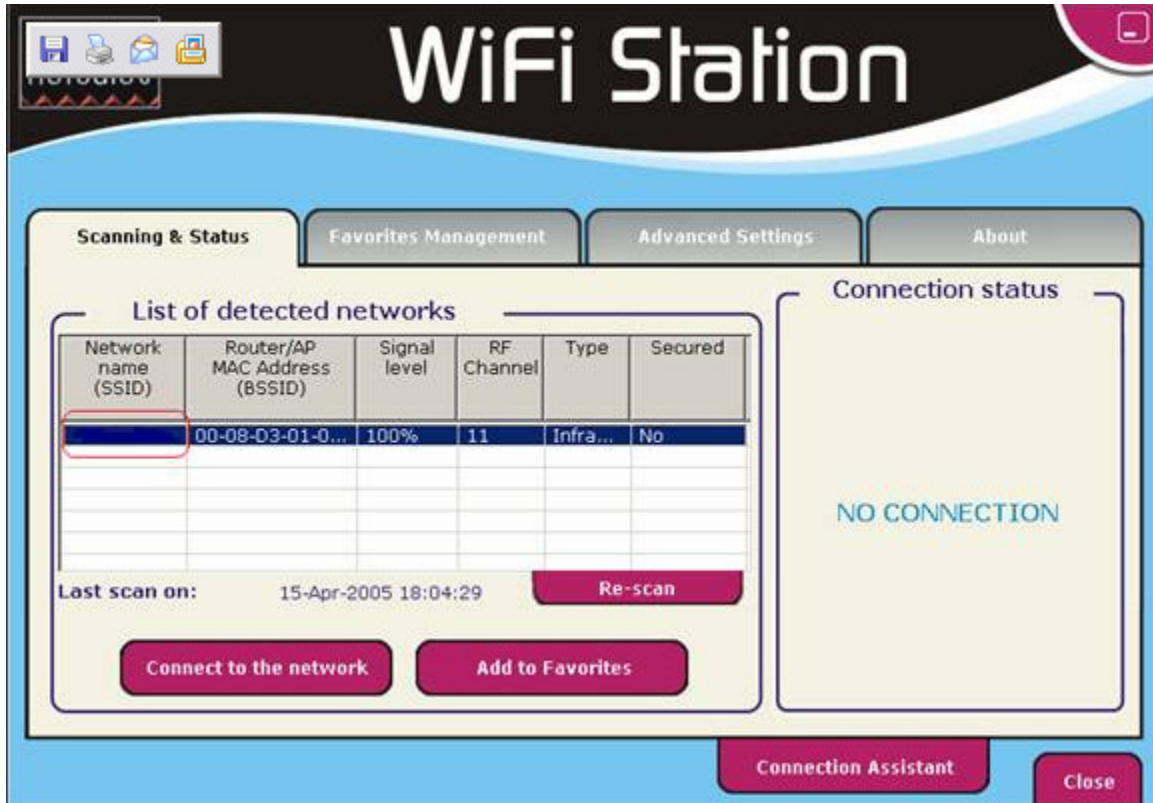
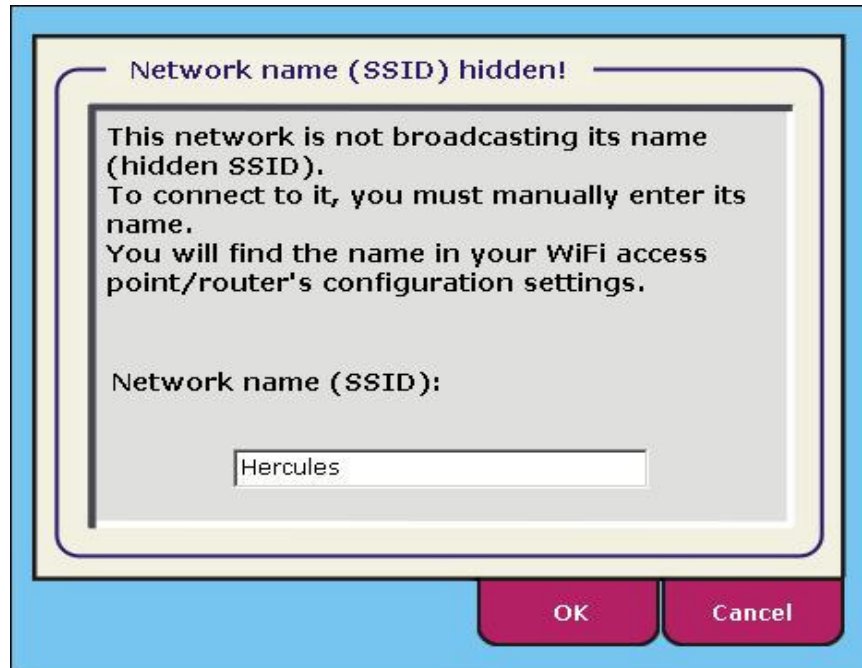


How to connect to a network whose name (SSID) is not broadcasted?

Once you choose not to broadcast the name (SSID) of the network from your modem router's parameters, the network will still be detected in WiFi Station, but its name won't be displayed.



If you want to connect to a network whose SSID is not broadcasted, you have to know its name and enter it manually.



Remark

*If you use **Microsoft Zero Config** (the WiFi management tool from Windows XP SP2) you cannot see at all the hidden networks. You must first add the network manually in your Favorite networks. Please refer to Windows Help for further details.*

