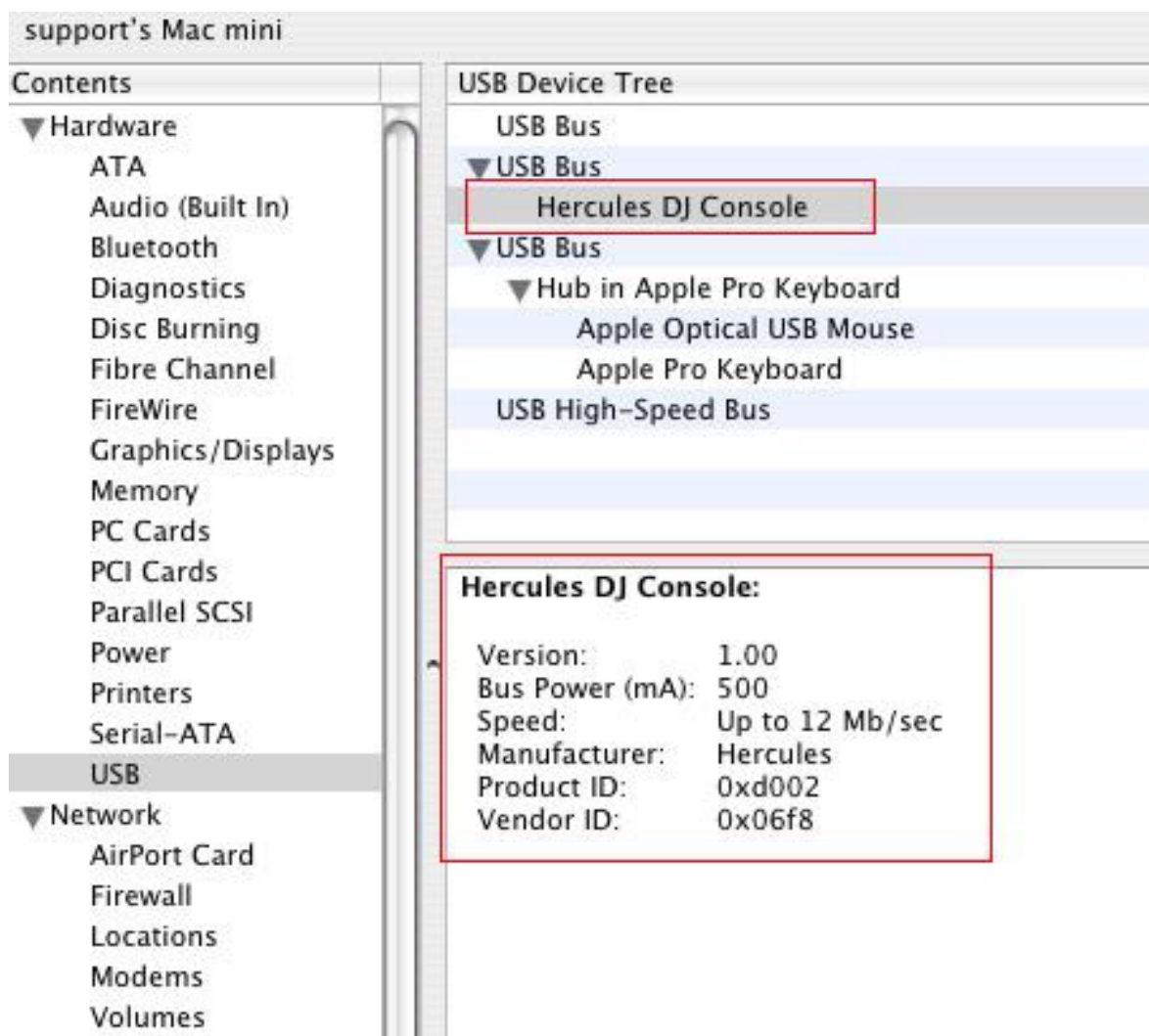
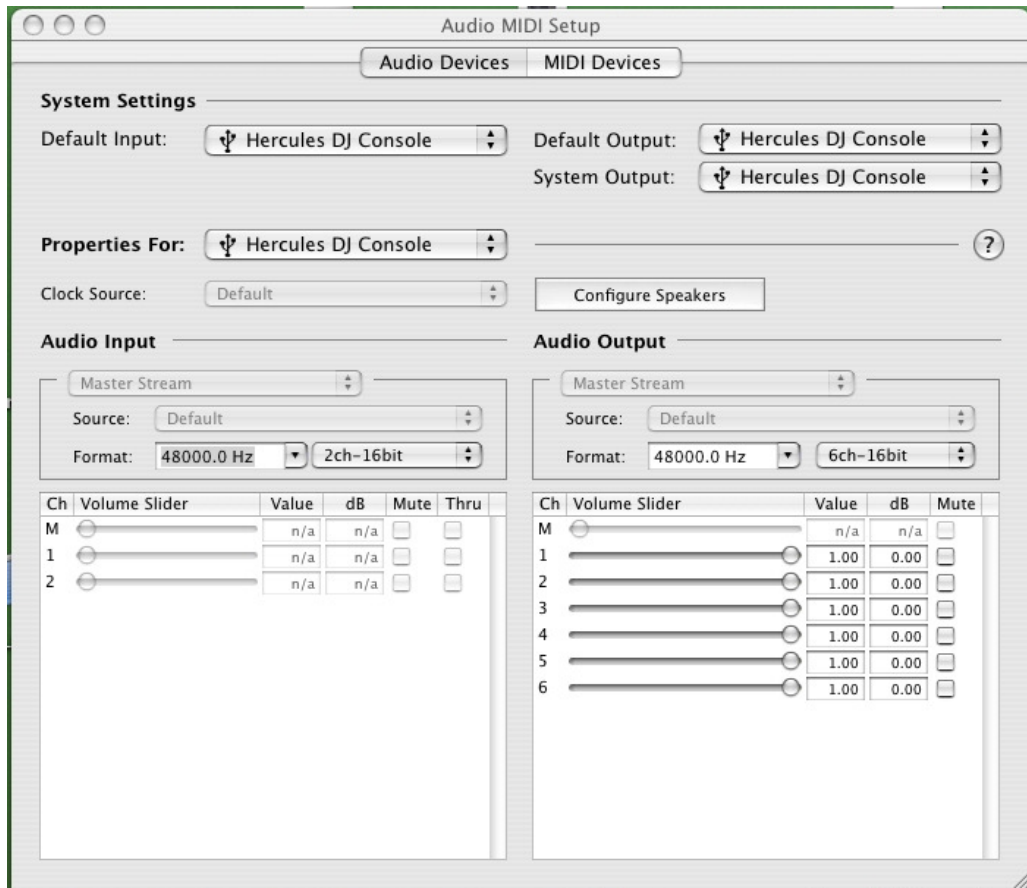


## How can I verify that my DJ Console MAC is correctly installed on my computer ?

Once connected, the DJ Console MAC should normally be enumerated by System Profiler (Application / Utilities):

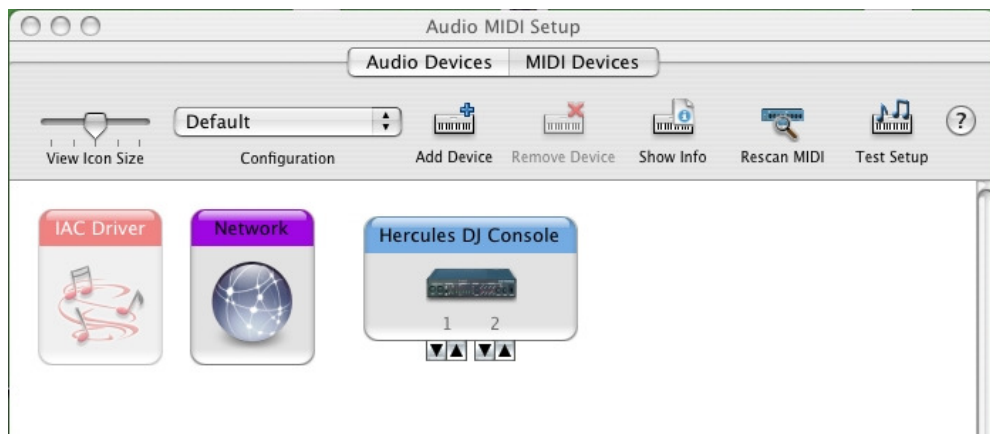


The DJ Console will also be present under "System Preferences > Sound", but also (and most importantly), in "Audio/MIDI SETUP" (Application > Utilities):



When connected, the DJ Console should be seen as the default audio INPUT and OUTPUT, but if not, you can use the drop menu to select it.

Under MIDI DEVICES, you should notice the Console inputs and outputs



Finally, Open the DJ Console Control Panel (Application > DJ Console), which will provide you with additional options. The Control panel also includes information about the FIRMWARE and CPL currently installed.

