

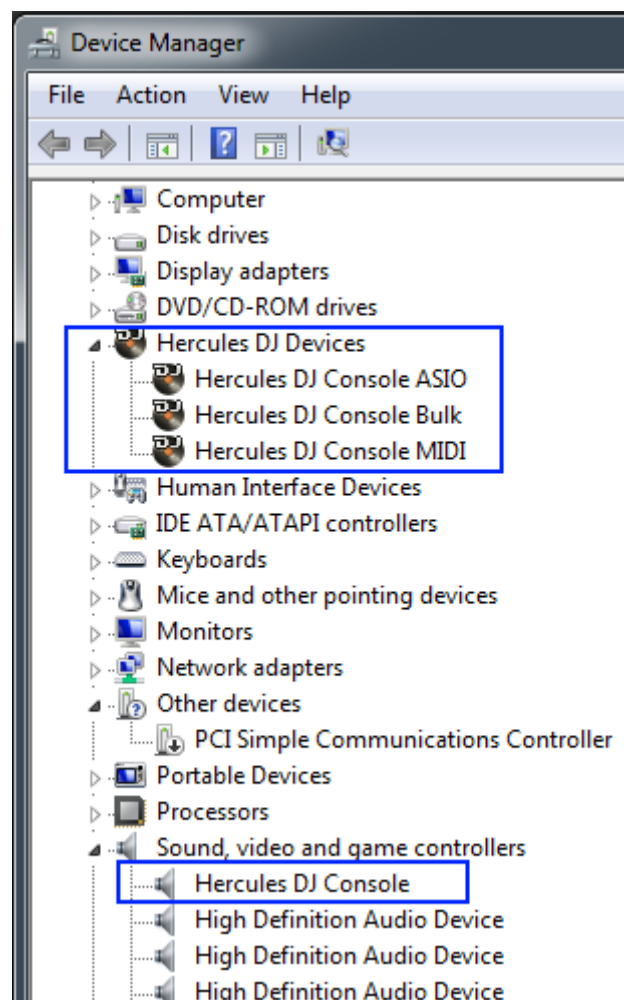
How can I verify that my DJ Console is correctly installed on my PC ?

First, we recommend that you use the latest driver version available from our web site to proceed to the installation.

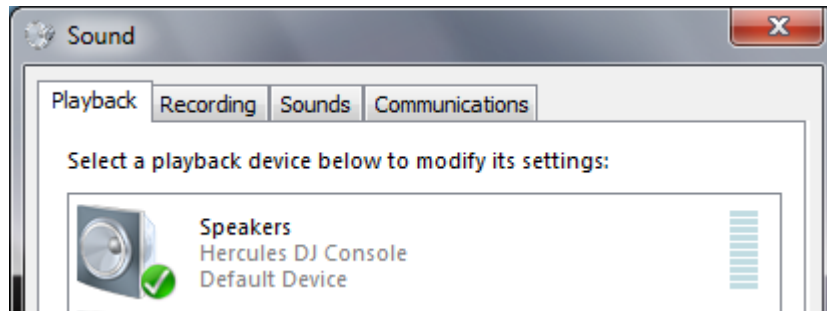
Once connected and installed, the DJ Console should normally be enumerated under Device Manager:

- Right click on **COMPUTER** icon on your desktop and select **Manage**
- From the left column, click on **Device Manager**

The different elements of the **DJ Console** you should normally appear in the following categories:

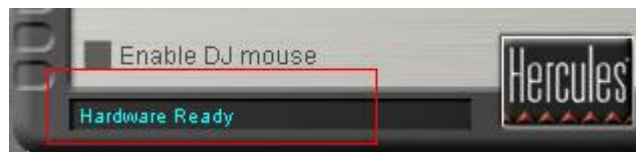


The DJ Console will also be present under **Sound and audio Properties** In Windows Control Panel.



When connected, the DJ Console should be seen as the default **Sound Playback** and **Sound Recording**. If you wish to use any other soundcard for applications other than DJ (Chat, movies, etc), you can select it from this menu.

You will notice that controls for **Sound Recording**, are not accessible, since changes are required to be made using the **DJ Console mixer**, which should appear in the notification area (near the clock). It can also be accessed from the **Windows Control Panel**



A message box at the bottom left corner should indicate the status of the console.

Click on the Hercules logo to obtain more information about the drivers currently installed. If you ever need to contact our technical support, be sure to have this information at hand.

