

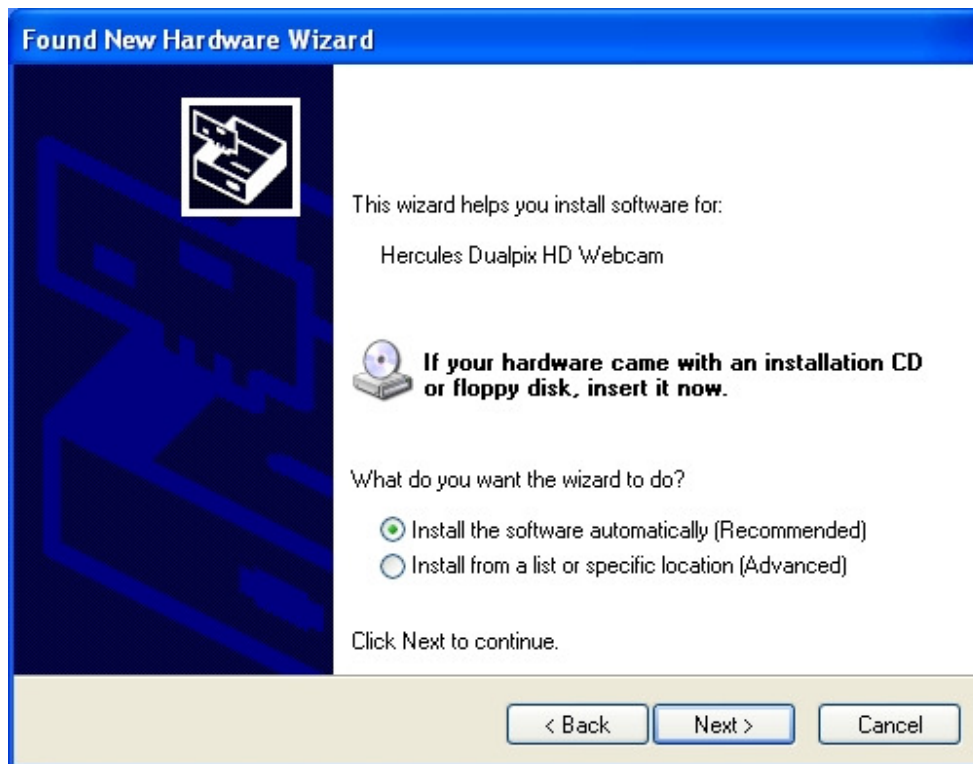
I just changed my webcam's USB port and Windows detects new hardware. What should I do?

If you connect your webcam to a different USB port than the one used during installation, Windows automatically detects new hardware. This is normal and you must then manually install the drivers by following these steps:

1. When the **Found New Hardware Wizard** appears, select the **No, not this time** option and click **Next**.



2. In the next dialog box, select the **Install the software automatically** option and click **Next**.



3. Your webcam's drivers are installed. Once installation is complete, you can click **Finish** and use your webcam again.

