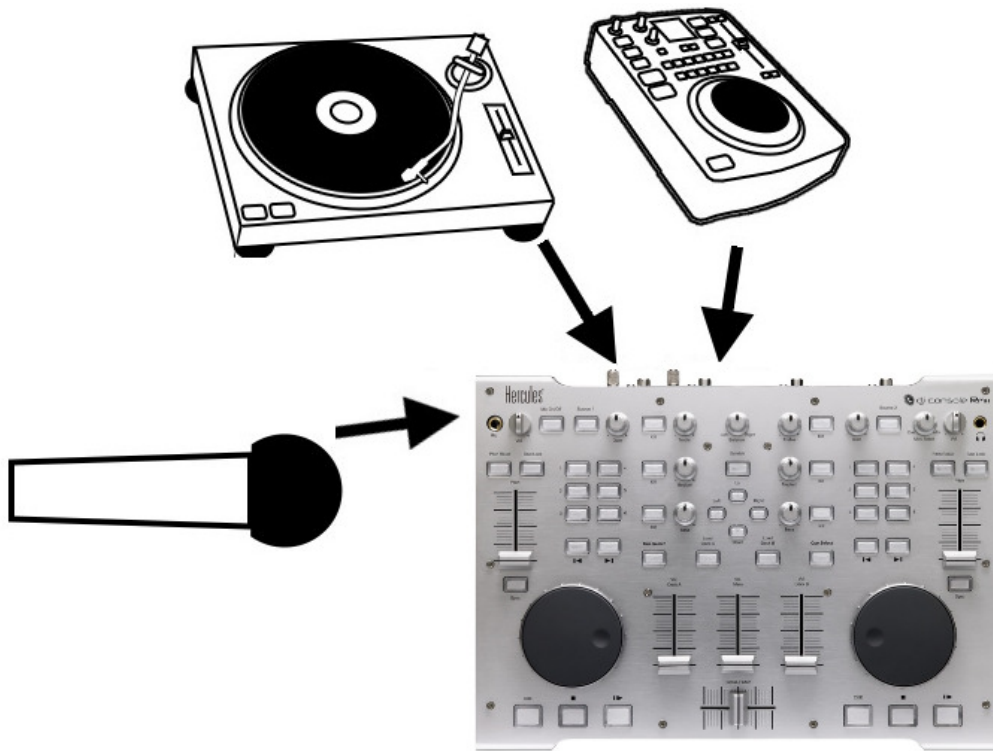


Configuring external audio sources with the DJ Console Rmx.



Many types of audio sources devices can be connected to your DJ Console. Whether you want to use the songs from your MP3 player or a Timecoded CD, it is important to define your audio source type (i.e. the correct output level for the device you are connecting) **before** making the connection to the DJ Console. Doing so will avoid possible audio issues such as distorted sound and preserve your ears.

Turntables

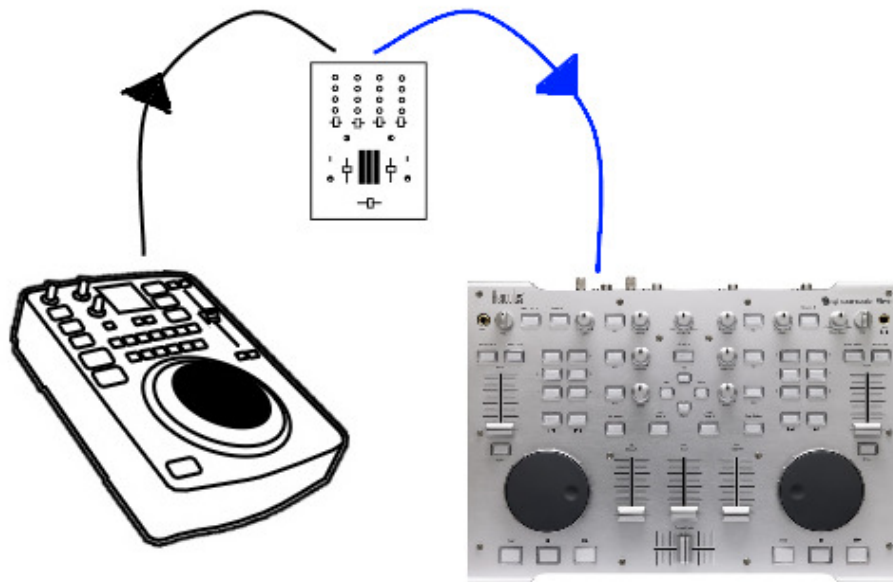
Turntables usually produce a **Phono level** signal, different from the **Line level** signal given by the majority of audio products. Be sure to set the switch **Line-Phono** to the correct position depending on your turntable output (Check the user manual for more details). The same applies if you are using a Phono/Line level converter.

If necessary, connect the ground between the DJ Console and the turntable.

For Line level devices and CDJ

It's also possible to connect **Line level (-10 dBv)** sources to the Rmx, such as CD or MP3 players. For these, insure that the switch is set to **Line-IN**.

When using devices that have high output level (**+4dBu to +8dBu**) such as Pioneer CDJ players, it might be necessary to insert another device between the output and the input of the DJ Console to attenuate the signal and avoid saturation:



This can be accomplished by using:

- **a small mixer**, such as the Behringer Xenyx 502

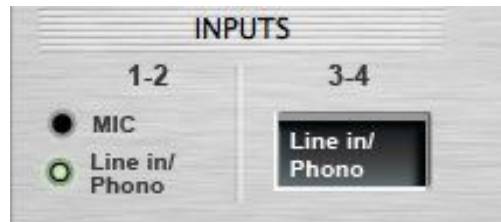
<http://www.behringer.com/EN/Products/502.aspx>

- **a dedicated attenuator**, such as the SM Pro Audio Nano Patch

<http://www.smproaudio.com/produkte/monitor-controller/nano-patch-passiver-lautstaerke-controller.html>

Microphones

When looking at the **Console Rmx control panel**, you will notice that **Input 1-2** is shared with the **Microphone** connector (located on the front or top of the console). As such, it will not be possible to use BOTH at once. The selection needs to be made from the Control Panel:



Please note that this doesn't pertain to the **Talk Over** mode (**Mic On-Off**) since this function acts directly on the hardware of Rmx by sending the signal of the microphone input to the main output.

We recommend using **dynamic** microphones with an **impedance** rating of **1 to 64 ohms**. If you wish to use a **condenser** microphone, please note that an external power source will be required as the Console doesn't provide phantom power (+48 V).

Once our device is connected, some additional configuration may be necessary in your software's settings in order to enable and use the DJ Console's inputs.

Note regarding ASIO (PC only)

When the DJ Console Rmx operates in ASIO **24Bit**, **Input 3-4** is automatically disabled. This is indicated in the control panel:



Consequently, **Input 3-4** cannot be used with an external source.