

Configuring the Hercules Muse Pocket with TRAKTOR PRO 2 (Windows)

This document will explain how to configure your Hercules Muse Pocket USB soundcard so that it can perform properly with Traktor Pro 2.

The following subjects will be covered:

- [Installation](#)
- [Speakers and headphone connections](#)
- [Traktor Pro 2 configuration](#)

Before we start, we need to identify your model:



Muse Pocket LT



Muse XL Pocket LT3

Traktor require the use of a soundcard with ASIO drivers to be able to access all in the Outputs (which is necessary for headphone preview). As the Muse Pocket does have such driver, you will need to use a generic ASIO driver called **ASIO4all**, available at:

www.asio4all.com

Once the download is complete, proceed to install ASIO4all and follow the onscreen instructions.



Speakers and headphone connections

Before we begin with the configuration, we must first make the appropriate connections:



Muse Pocket LT:

- Connect your speakers to the **Center/Sub** audio output.
- Connect your headphone to the **FRONT** audio Output.

Muse XL Pocket LT3:

- Connect your speakers to the **Center/Sub** audio output.
- Connect your headphone to the **FRONT** audio Output.



Important: DO NOT connect your headphone to the dedicated headphone output, as this will prevent all other outputs from working.

A note regarding 5.1 speakers systems:

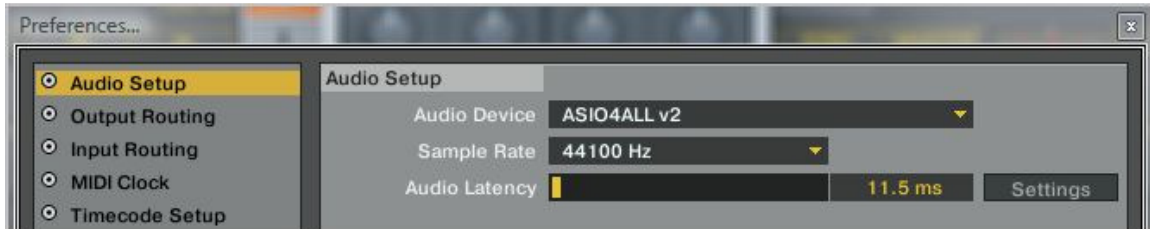
- Only connect the FRONT (often colored green) connector to the soundcard.
- Your system will probably need to be configured in **SURROUND** mode so that the sound can be heard on all speakers (Consult the speaker's user manual for more details).



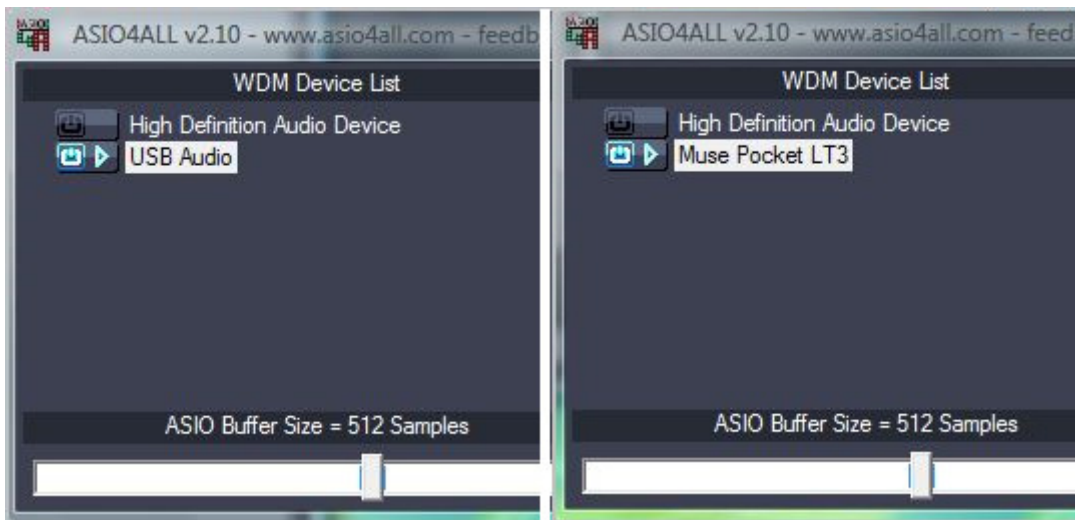
Traktor Pro 2 Configuration

1) Sound card selection

Launch Traktor. Open the configuration window (**Preferences > Audio Setup**)

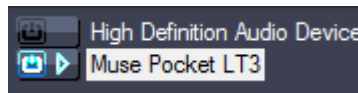


- Under **Audio Setup**, select **ASIO4ALL** as **Audio Device**
- Click on **SETTING** to bring up the **ASIO4All** configuration menu:

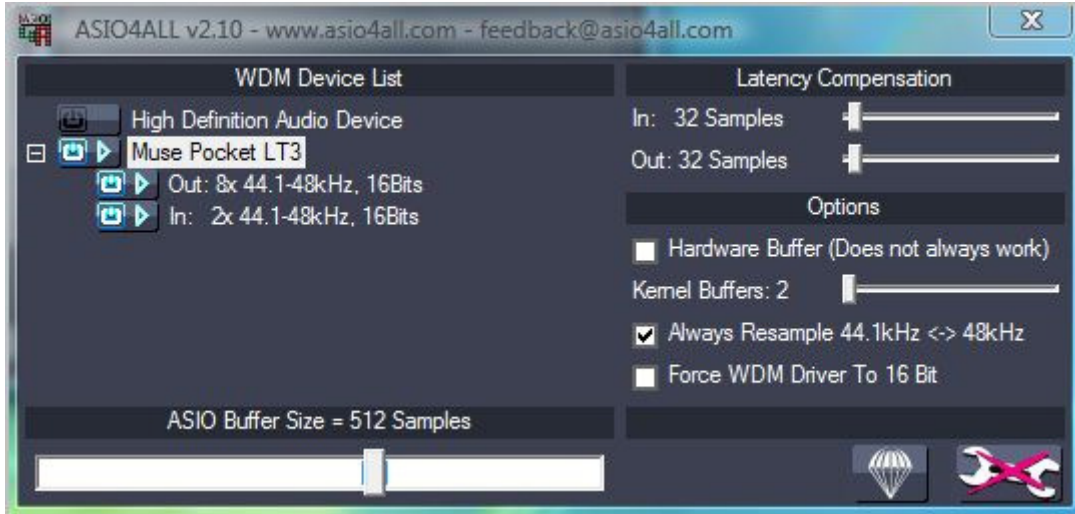


The **Muse LT3** should appear as such, while the Muse LT will appear as **USB AUDIO**

From the **WDM Device List**, enable only the audio device you wish to use (in **blue**). Your computer integrated soundcard and any other audio device (such as the webcam microphone for example) should be disabled to prevent conflicts.



To access the **Advanced** mode, click on the **wrench** (at the bottom right corner):



From this view, you can see all the Input and Output possibilities.

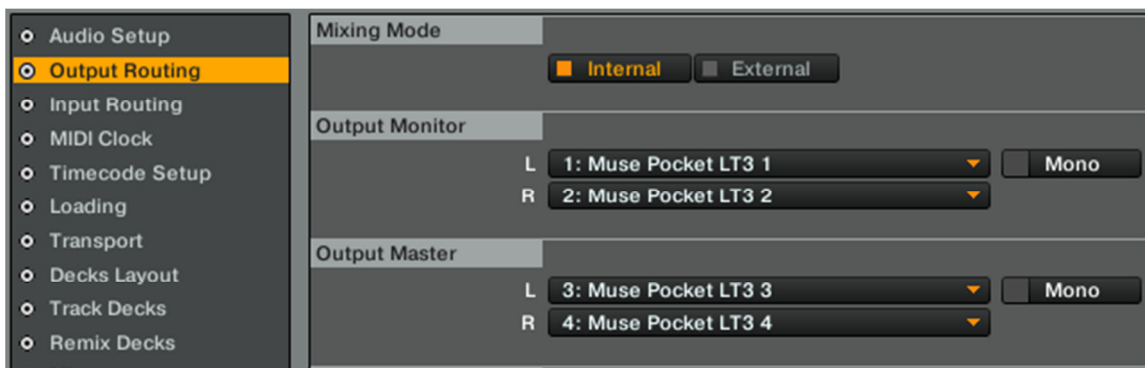
At the bottom is the **ASIO buffer size** slider, the most important setting which you will probably need to modify at some point (more on that later...)

For more details, please consult the **ASIO4ALL** user manual.

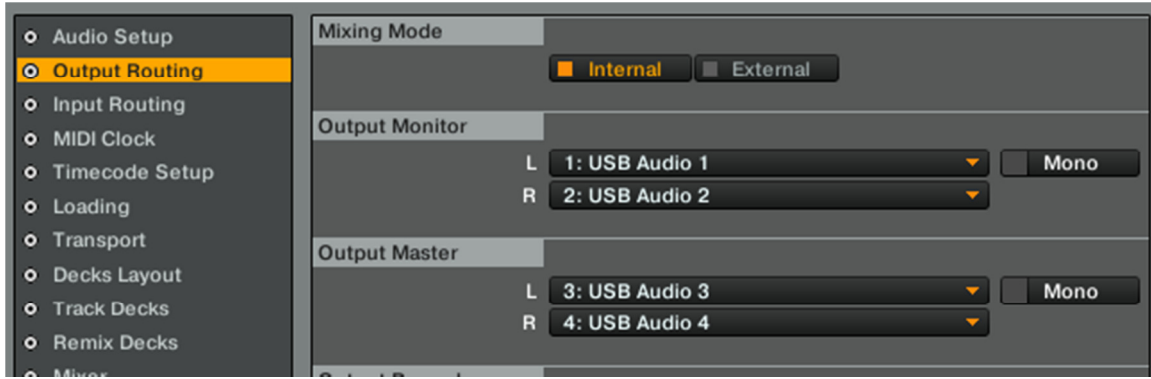
2) Output selection

Close the ASIO4all configuration window, and move back to the **Output Routing** menu to set the various outputs as follow:

Muse Pocket LT3



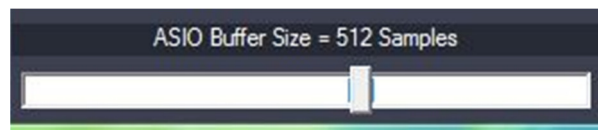
Muse Pocket LT



These configurations correspond to the outputs to which we previously connected our speakers and headphone.

3) Audio buffer size adjustments

If you have any audio issues like clicks and stutter, go back to the ASIO4all control panel and increase or decrease the **ASIO buffer size** by one step at a time.



Use Traktor again for a while, and repeat until you find the correct setting for your computer.

For further enhancements possibilities that can be applied to your computer to improve performances, please consult our PC and Windows optimizations guide:

http://ts.hercules.com/faqs/eng/her_eng_00364.pdf

You are now ready to use the Muse Pocket with Traktor.

