

Control Preview (PFL) with DJControl Compact in Djuced 18

Tip date: 2016/11/14

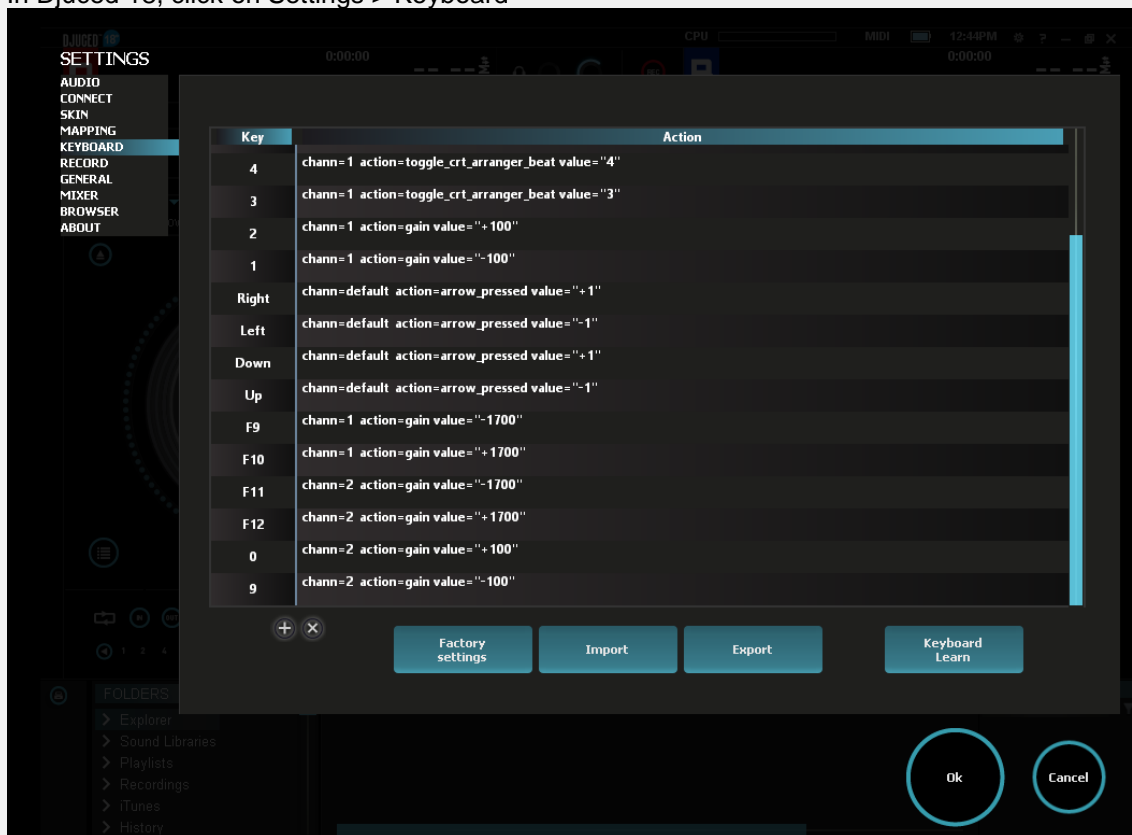
A. Status

DJControl Compact has no built-in audio, and no controls to select which deck you want to preview in your headphones.

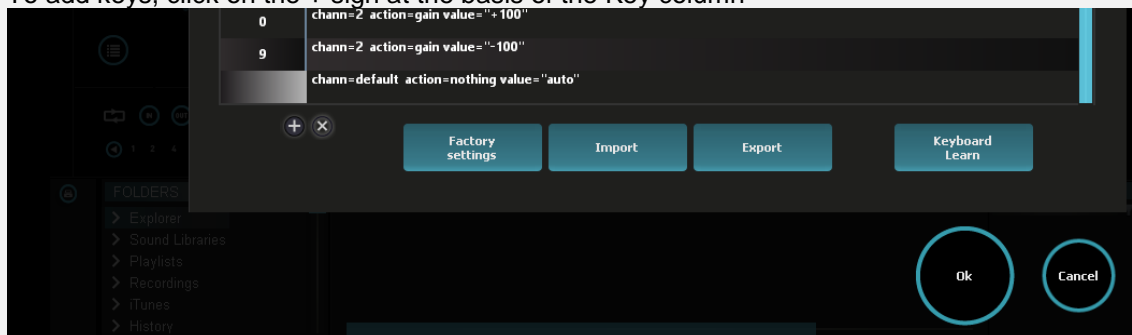
If you have a sound card capable to play a preview in addition to your master (i.e: 2 independent stereo outputs), a workaround solution is to map the control of the deck you preview on your computer keyboard

B. Map deck A preview on your keyboard

1. Run Djuce 18.
2. In Djuced 18, click on Settings > Keyboard



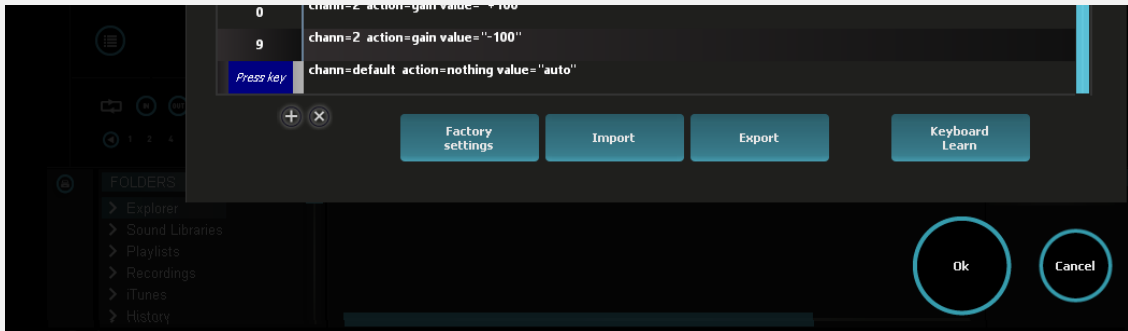
3. To add keys, click on the + sign at the basis of the Key column



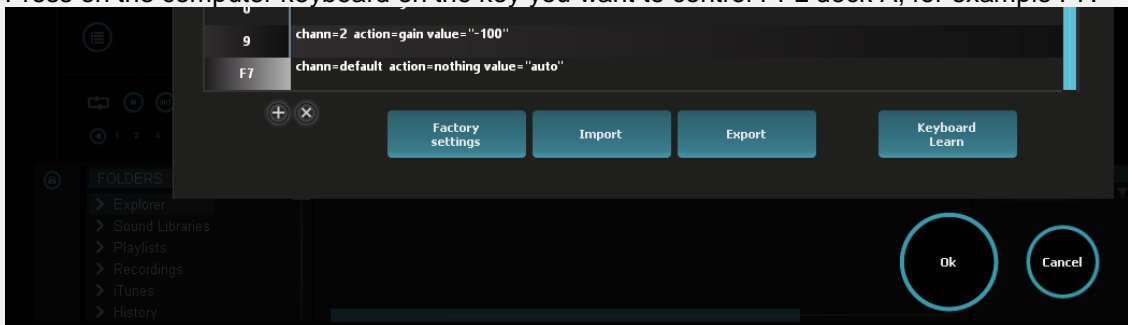
4. Click on the empty key field starting the new line displayed: it displays "Press Key".

Control Preview (PFL) with DJControl Compact in Djuced 18

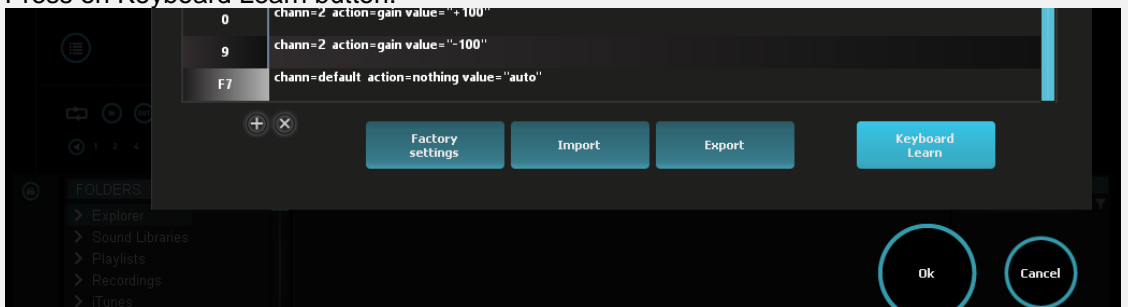
Tip date: 2016/11/14



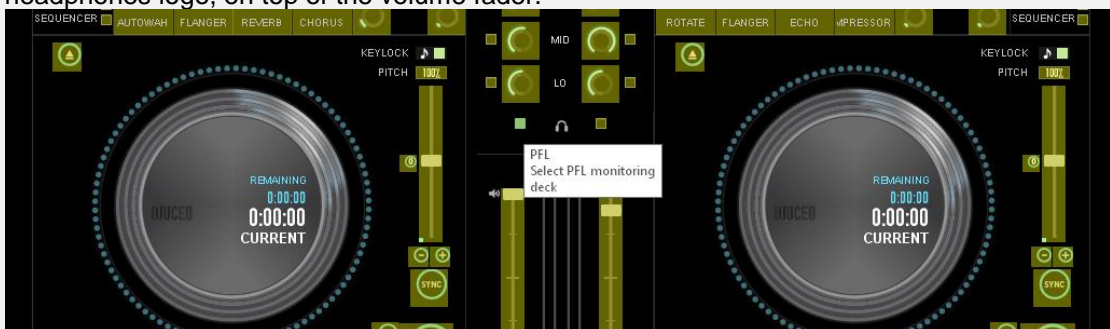
5. Press on the computer keyboard on the key you want to control PFL deck A, for example F7.



6. Press on Keyboard Learn button.



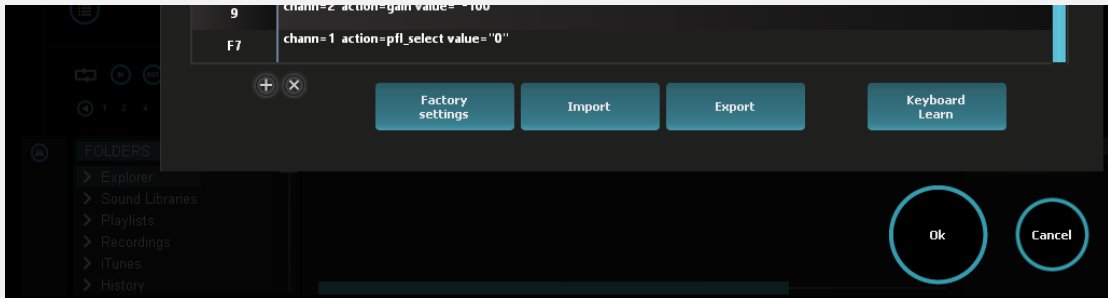
7. You arrive in Djuced 18 standard interface, but with a yellow veil over the commands you can map. Click on the command controlling the left deck preview (Deck A), on the left of the headphones logo, on top of the volume fader.



8. You come back to Settings > Keyboards and you see the action for F7 key has been updated in Chann=1 action=pfl_select value="0".

Control Preview (PFL) with DJControl Compact in Djuced 18

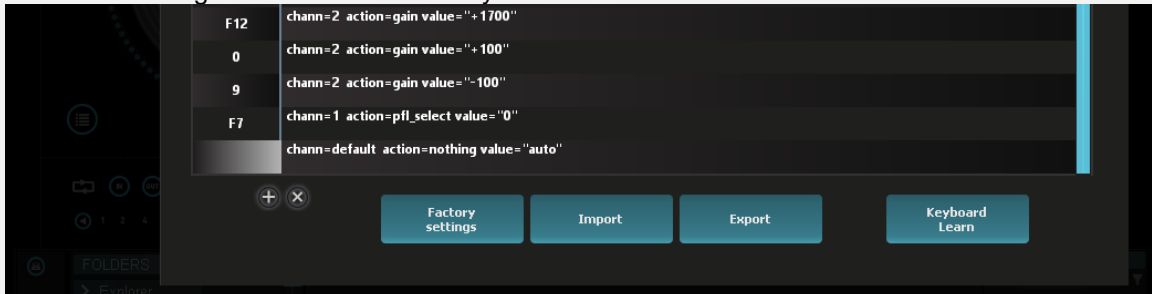
Tip date: 2016/11/14



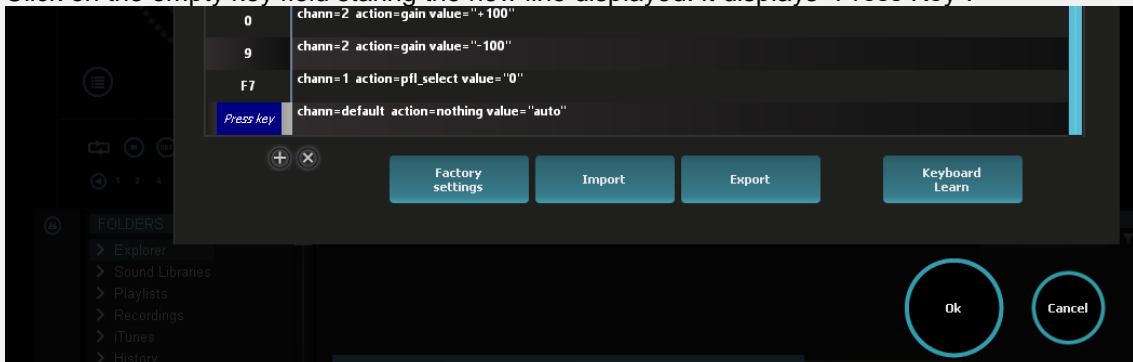
- You can no do the same to map F8 as key to control deck B preview.

C. Map deck B preview on your keyboard

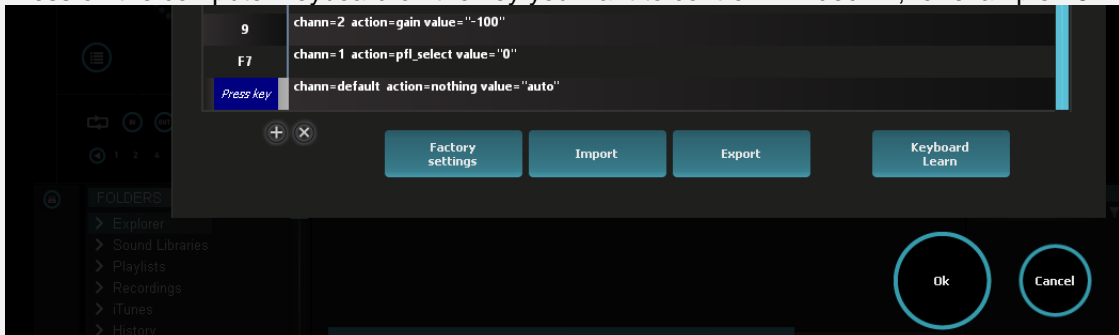
- Click on the + sign at the basis of the Key column



- Click on the empty key field starting the new line displayed: it displays "Press Key".



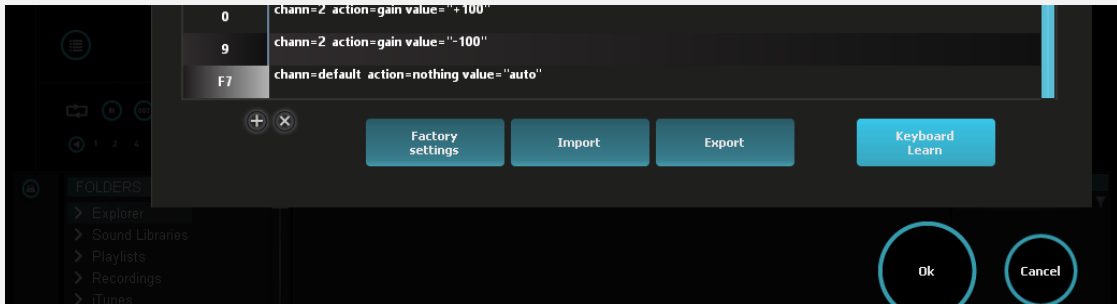
- Press on the computer keyboard on the key you want to control PFL deck B, for example F8.



- Press on Keyboard Learn button.

Control Preview (PFL) with DJControl Compact in Djuced 18

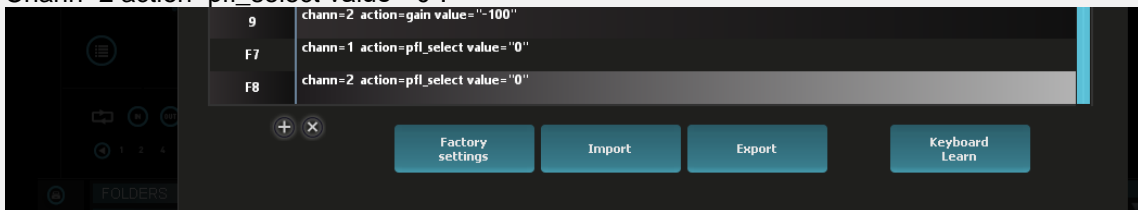
Tip date: 2016/11/14



- You arrive in Djuced 18 standard interface, but with a yellow veil over the commands you can map. Click on the Field controlling the right deck preview (Deck B), on the right of the headphones logo.



- You are back to Settings > Keyboards and you see the action for F8 key has been updated in Chann=2 action=pfl_select value="0".



Click on OK: you can now control the deck playing in headphones with F7 and F8 keys.