


eCAFÉ™ Update Manager

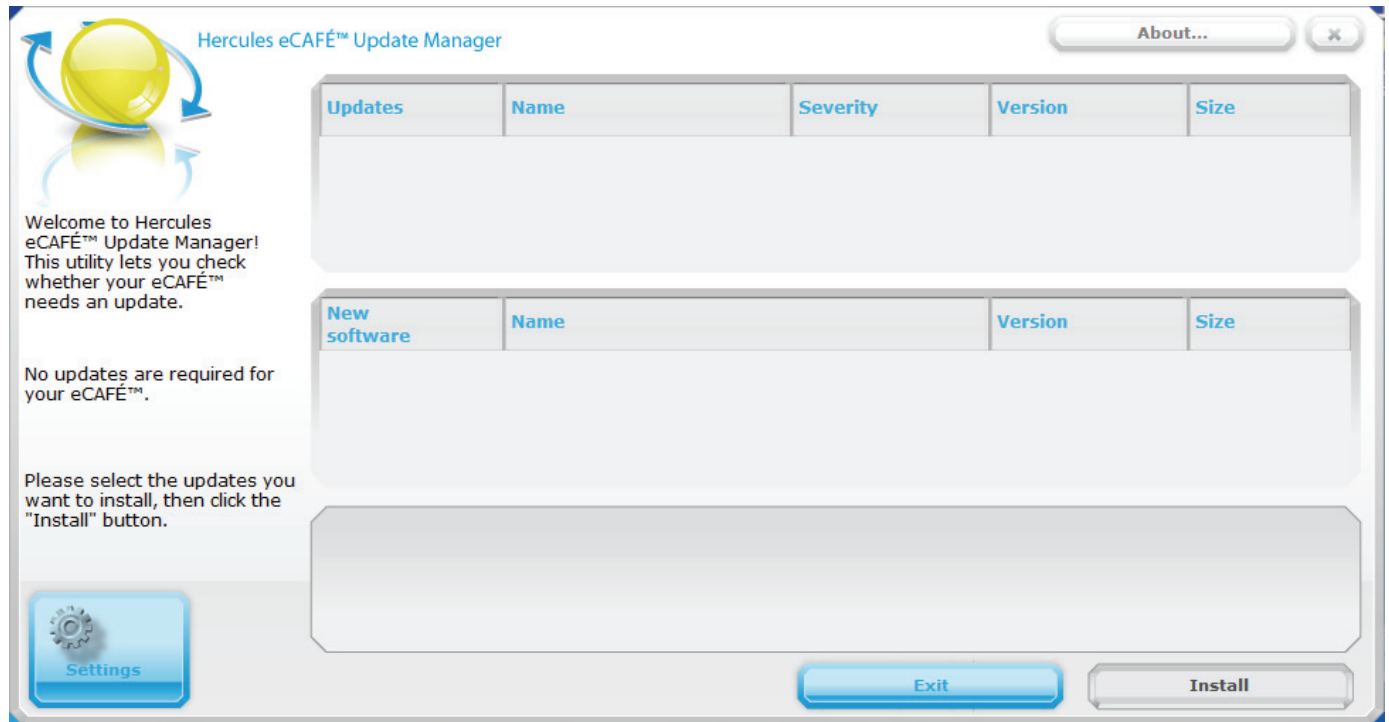
CONTENTS

1. INTRODUCTION	3
2. SEARCHING FOR UPDATES.....	4
3. INSTALLING AN UPDATE OR NEW SOFTWARE	6

1. INTRODUCTION


eCAFÉ™ Update Manager can provide you with the latest versions of the software (eCafé™ Email Center, eCafé™ CONNECT, eCafé™ Webcam Station, etc.) or new applications specifically developed by Hercules for your eCafé™.

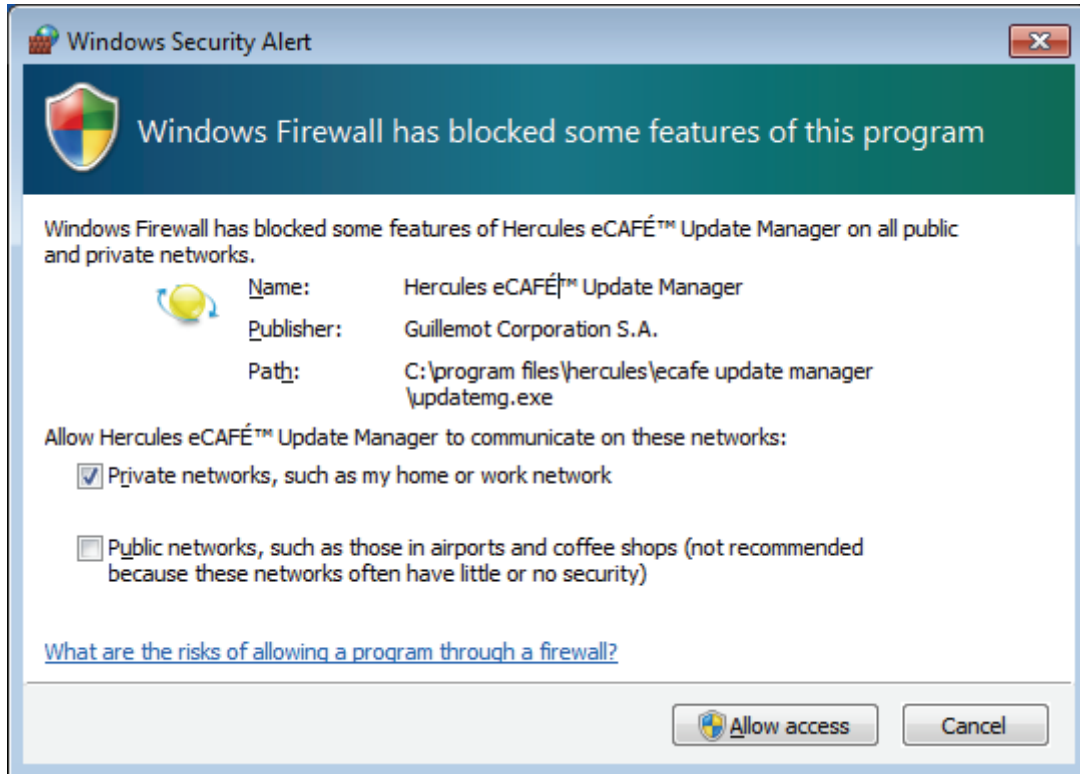
 You need an Internet connection to access the update server.



2. SEARCHING FOR UPDATES

eCAFÉ™ Update Manager automatically searches for updates that are available on the Hercules server, either at the default frequency or at a frequency that you can set.

 During the first update search, Windows asks you to allow eCAFÉ™ Update Manager to access Internet. For security reasons, it is recommended to select only the Private networks box.

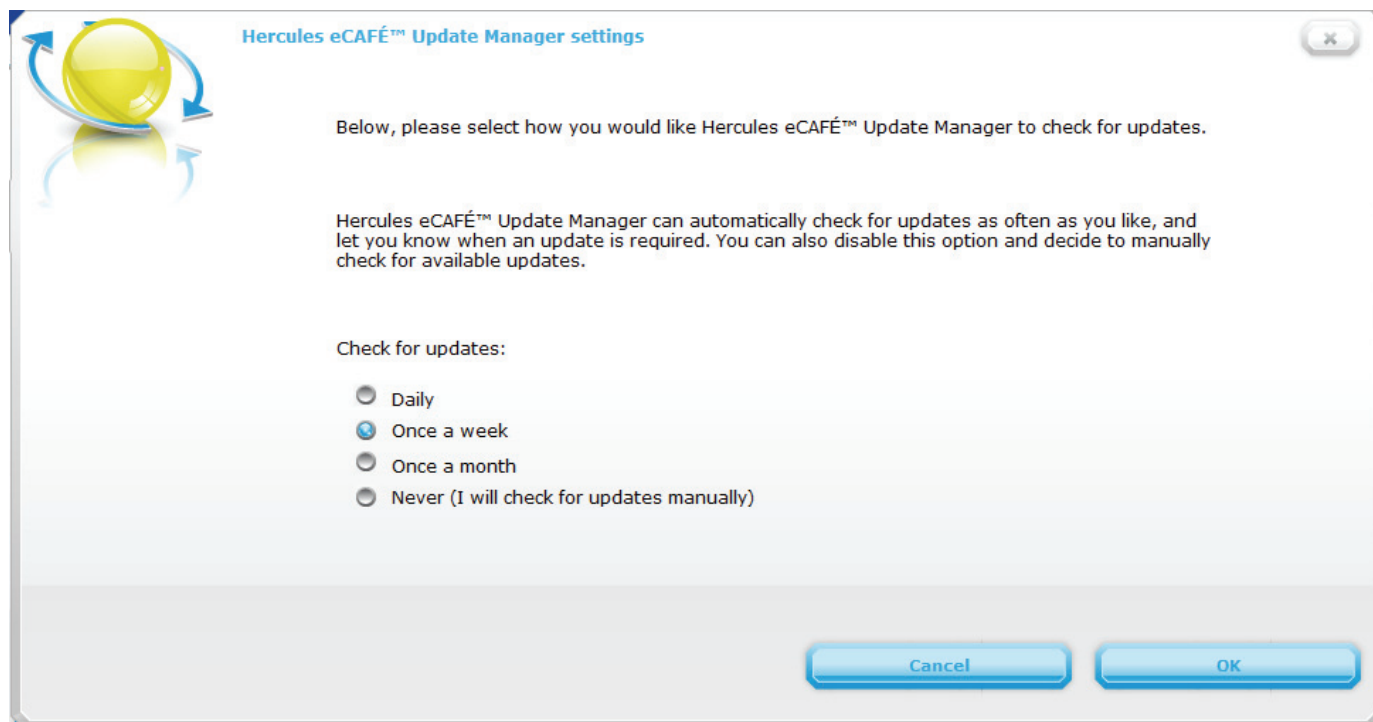


To modify the automatic checking frequency:

- Click on the  icon located on the Windows desktop to run eCAFÉ™ Update Manager.

- Click on .

- Select one of the options proposed.



- Click on **OK**.

To deactivate automatic checking for updates:

- Click on the  icon located on the Windows desktop to run eCAFÉ™ Update Manager.

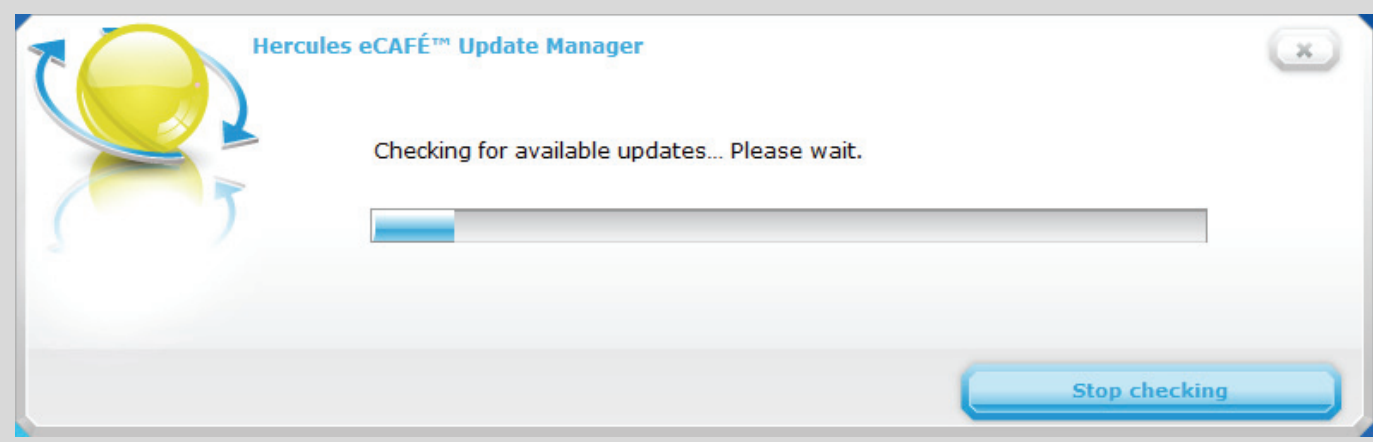


- Click on

- Select the **Never (I will check for updates manually)** option.

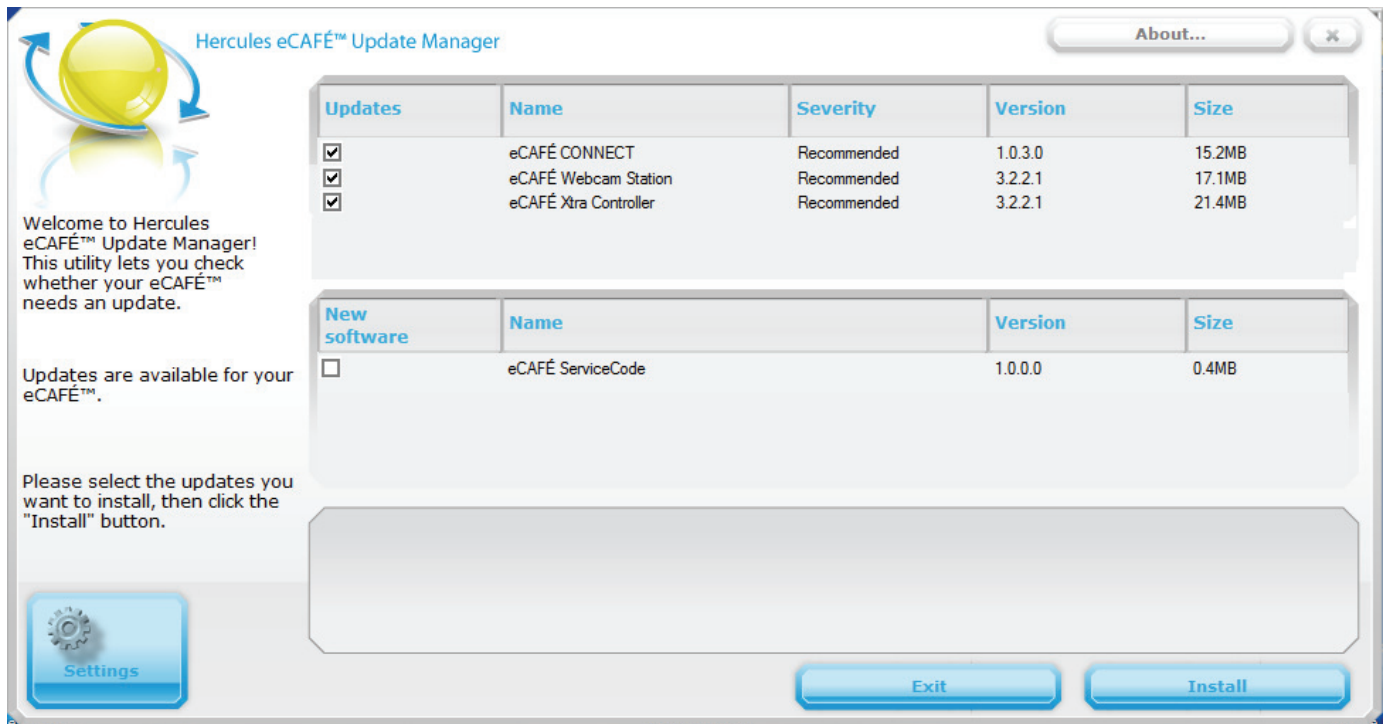
- Click on **OK**.

 Now, the search for updates will only begin each time you run eCAFÉ™ Update Manager.



3. INSTALLING AN UPDATE OR NEW SOFTWARE

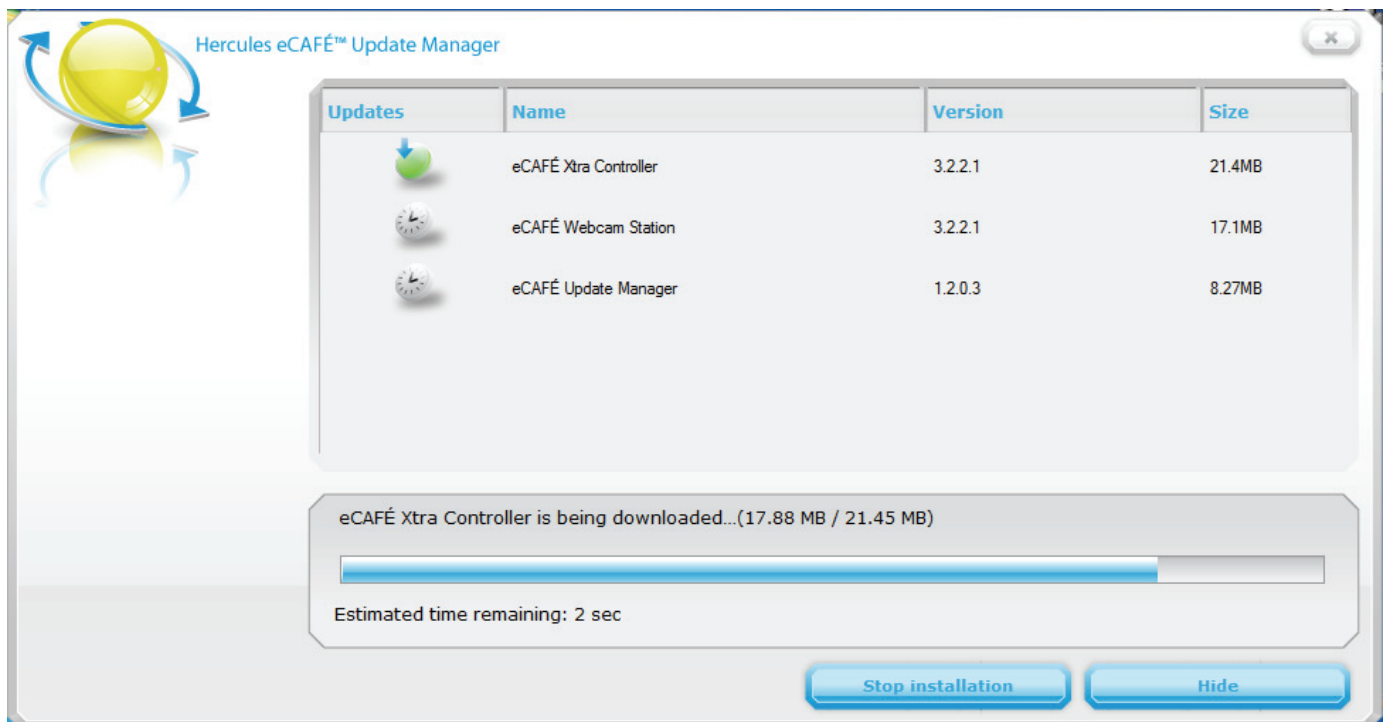
eCAFÉ™ Update Manager automatically searches for updates or new software at a frequency that you set: **Daily**, **Once a week** (by default), **Once a month**, or a manual search if you select the option **Never (I will check for updates manually)** option in the preferences. If there is an update or new software, it will be indicated in the main window with information on the version, severity and size.



To install an update or new software:

- From the eCAFÉ™ Update Manager window, select one or more updates and software applications from the list proposed.
- Click on **Install**.

eCAFÉ™ Update Manager will download the update or the new software and start the installation.



- Follow the instructions on the screen. If you selected several updates, eCAFÉ™ Update Manager will download them one after the other.



Some updates may require you to restart your computer. A message will inform you if this is necessary.

During the download operation, you can click on **Hide** to place the eCAFÉ™ Update Manager window in the background, without stopping the download operation.

The **Stop installation** button is used to suspend the download operation. You can restart it at any moment by pressing this button again.

Registered trademarks

Hercules® and eCAFÉ™ are registered trademarks of Guillemot Corporation S.A. Microsoft®, Windows®, Windows Live®, Microsoft® Windows® 7, MSN®, Internet Explorer® and the Windows flag are trademarks or registered trademarks of Microsoft Corporation in the United States and/or in other countries. Wi-Fi is a registered trademark of the Wi-Fi Alliance. All other registered trademarks and brand names are hereby acknowledged and are the property of their respective owners. Illustrations not binding. Contents, designs and specifications are liable to change without prior notice and may vary according to countries.

Copyright

© 2009 Guillemot Corporation S.A. All rights reserved.

No part of this manual may be copied, summarised, issued, posted, stored in a search engine or translated in any language or computer language, for any purpose or by any means that may be, whether electronic, mechanical, magnetic, manual, by means of photocopies, recordings or others, without the express authorisation in writing of Guillemot Corporation S.A.

End User License Agreement

IMPORTANT: Please read the following End User License Agreement before using the eCAFÉ™ device. The term "Software" refers to all executable programs, managers, libraries, data files and to any documentation relating to the programs, as well as the complete operating system included in the eCAFÉ™ product. The Software is licensed, and not sold, to the User, exclusively for use complying with the terms of this License Agreement. You hereby accept and agree to abide by the Terms & Conditions of this License Agreement. If you disagree with the Terms & Conditions of this License Agreement, please do not use the Software.

The Software is protected by international copyright laws and agreements, as well as other international laws and agreements relating to intellectual property.

The Software (excluding the software sub-applications) remains the property of Guillemot Corporation S.A. All rights reserved. Guillemot Corporation S.A. grants only a limited and non-exclusive right to use the Software.

Guillemot Corporation S.A. reserves the right to cancel this License Agreement in the event of failure to abide by its Terms & Conditions.

License granted

1. The license is granted to the original Buyer alone. Guillemot Corporation S.A. remains the sole owner and holder of the Software (excluding the software sub-applications), and reserves all rights that are not expressly granted by this License Agreement. The User is not allowed to sub-license the rights granted by this License Agreement. The User is allowed to transfer this License, provided that the original Buyer retains no part of the Software and that the Transferee reads and accepts the Terms & Conditions of this License Agreement.
2. The Buyer may only use the software on one computer at a time. The machine-readable part of the Software may be copied to another computer, provided that the Software is deleted from the first computer and that it is impossible to use the Software on several computers at the same time.
3. The Buyer hereby acknowledges and accepts the copyright belonging to Guillemot Corporation S.A. The copyright shall in no event be removed from the Software, nor from any documentation, whether printed or electronic, provided with the Software.
4. The License grants the User the right to perform one (1) copy of the machine-readable part of the Software for archival purposes, provided that the User also copies Software's copyright.
5. Except within the limits expressly allowed by this License Agreement, the Buyer may not agree or allow any third party to agree to: grant a sublicense; provide or divulge the Software to other third parties; allow use of the Software on several computers at a time; perform alterations or copies of any kind; reverse engineer, decompile or modify the Software in any way or attempt to obtain information relating to the Software that is not accessible to the User; perform copies or translations of the User Manual.

Warranty limitation

The Software is provided "as is", with no guarantee whatsoever from Guillemot Corporation S.A. regarding its use and/or performance. Guillemot Corporation S.A. does not guarantee that the operation of the Software will be free from interruptions or errors. The use or the performance of the Software remain under the Buyer's entire responsibility, and Guillemot Corporation S.A. can provide no guarantee of any kind with regard to the performance and results obtained by the Buyer while using the Software. No guarantee of any kind, whether explicit or implied, is offered by Guillemot Corporation S.A. with regard to the non-violation of third party rights, the merchantability or the adequacy of the Software to a specific use.

In no event shall Guillemot Corporation S.A.'s liability be engaged in the event of damages of any kind arising from the use or the incapacity to use the Software.

Applicable law

The Terms & Conditions of this License Agreement are subject to French Law.

ENVIRONMENTAL CARE RECOMMENDATIONS



At the end of its useful life, this product should not be discarded with standard household refuse but should be given to a collection point for waste from electric and electronic devices, where it shall be recycled.

This is stated by the symbol that appears on the product, the User Manual or the packaging.

According to their specificities, these materials may be recycled. By supporting recycling and other methods of recovering waste from electric and electronic equipment, you help care for the environment.

Please consult with the local authorities, who will refer you to the relevant waste collection point.