

HERCULES P32 DJ

Hercules P32 DJ Mapping Details with Traktor Pro 2



Settings - OS X

1- Audio configuration in Traktor

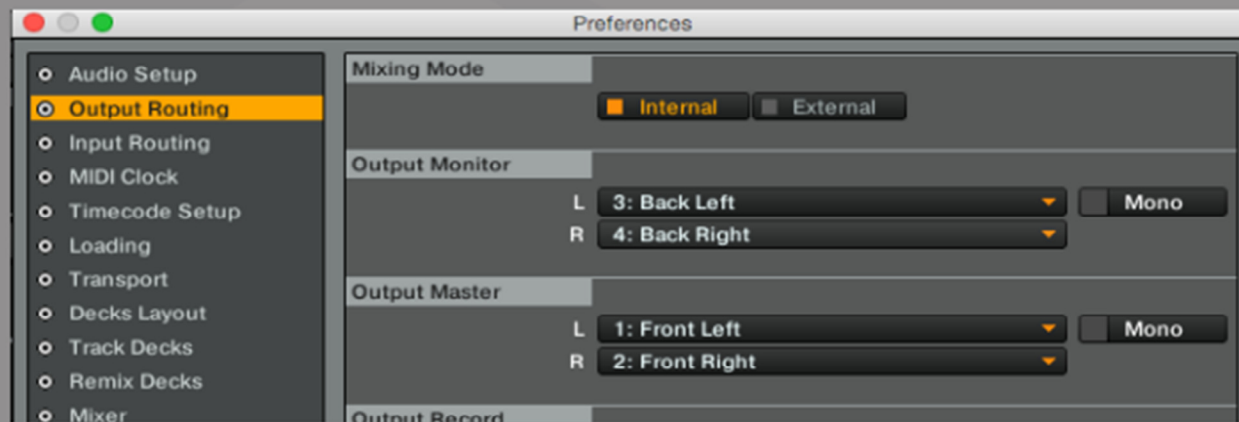
a) From the main menu, click on **Preferences** and select **Audio Setup**.

Choose **Hercules P32 DJ** as **Audio Device**



You can adjust the audio **Latency** if needed.

b) Under **Output Routing**, set **Output 3 & 4** for **Monitor** and **Output 1 & 2** for **Master**.



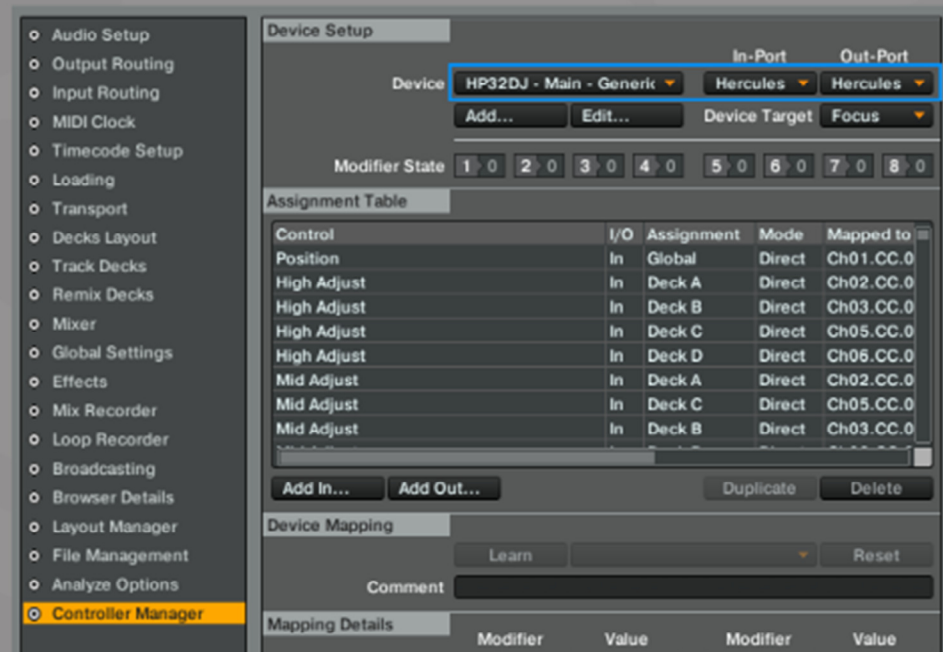
Traktor MIDI configuration

- a) click the **Import** button to locate and select the **.tsi** configuration file.
- b) A menu will then display the different categories that will be imported.
(Image may not reflect the actual Categories)



c) in **Controller-Manager:**

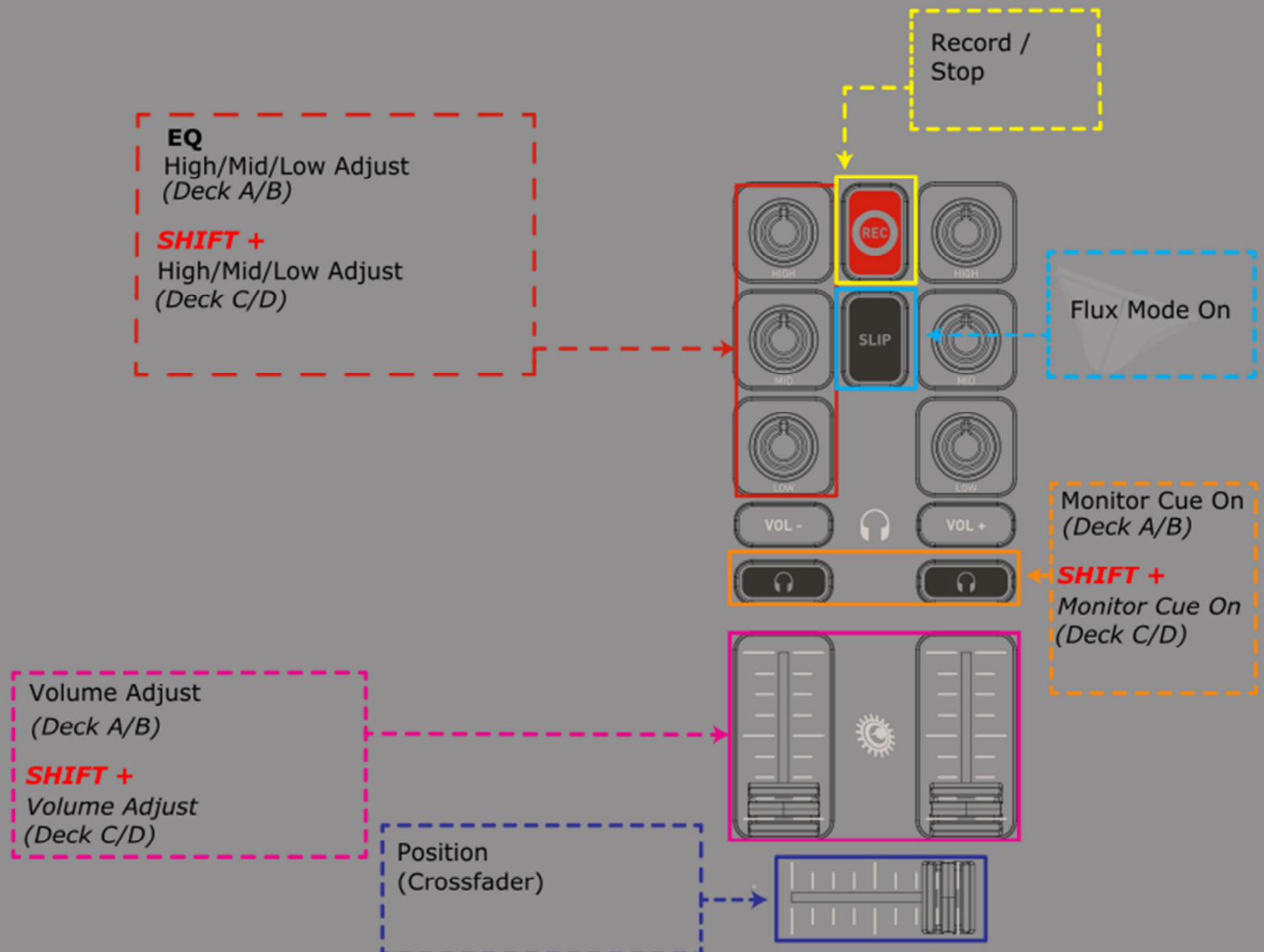
- Under **Device**, choose **HP32DJ**
- For both **In-Port** and **Out-Port**, be sure **Hercules P32DJ** is selected.



This menu also give you access to the various MIDI settings, should you wish to modify them.
Refer to **Traktor User manual** (chapter **Controller Manager**) for more details.

MIDI Layout for Hercules P32DJ and Traktor 2 Pro

The terms used are those employed in Traktor, unless otherwise indicated (*)



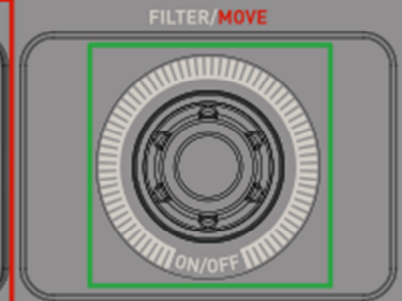
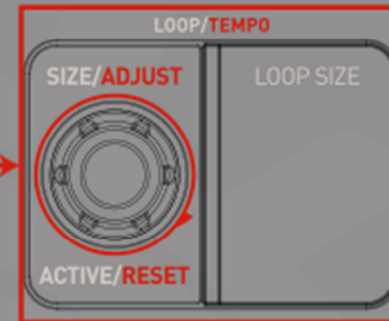
Encoder: Loop Size Adjust

Encoder Button: Loop Set

SHIFT +

Encoder: Tempo Adjust

Encoder Button: Tempo Reset



Encoder: Filter Adjust

Encoder Button: Filter On / Off

SHIFT +

Encoder: Seek Position

BROWSE & LOAD

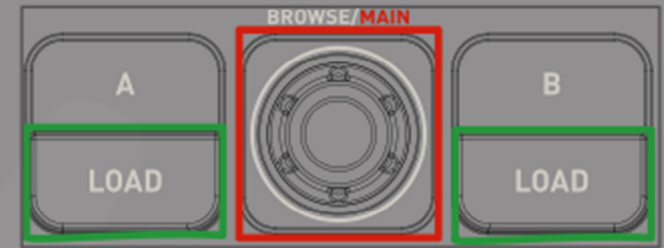
Press the **Browser** knob button to switch between **Folders** and **Playlist** (Default).

= **Select Up/Down** (Browser Tree / Browser List)

SHIFT + Encoder Button = Only Browser

Deck A SHIFT + Encoder = **Loop Recorder Dry / Wet**

Deck B SHIFT + Encoder = **Master Volume**



Load Selected - **Deck A & B** (Default)

LOAD A: Expand/Collapse (Folder Mode)

Transport

CUE

SHIFT + = Seek Position (Reset)

Play / Pause (Deck A & B)

SHIFT + = **Play / Pause** (Deck C & D)

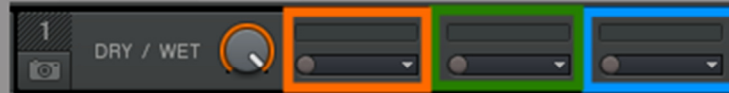
Sync (Deck A & B)

SHIFT + = Sync (**Deck C & D**)



Effects

Fx Unit 1-2



Effect 1/2/3 Adjust

Effect 1/2/3 On

SHIFT + = Effect 1/2/3 Select

FX AMOUNT

FX unit 3-4

Dry/Wet Adjust

Effect On/Adjust (Macro)

ON

ON

ON

MACRO

DRY/WET

POWIN

The diagram shows four circular control elements, each with a rotary knob and a button below it. The first three buttons are labeled 'ON' and are highlighted with orange, green, and blue borders respectively. The fourth button is labeled 'MACRO' and is highlighted with a yellow border. A yellow arrow points from the 'MACRO' button to the 'FX unit 3-4' control panel below.



PERFORMANCE PADS : HOTCUES

Select Set/Store Hot Cue 1-8

SHIFT + = *Delete HotCue 1-8*



PERFORMANCE PADS : Loop

Loop Recorder

- Rec | Play | Undo/Redo | Delete

- Loop Size: 4 | 8 | 16 | 32

SHIFT + = Slot Capture from Loop Recorder
(Remix Deck 1 - 4)



Loop Size Select + Set



PERFORMANCE PADS : SLICER



= Freeze Mode On / Off

PERFORMANCE


Slice Trigger 1-8



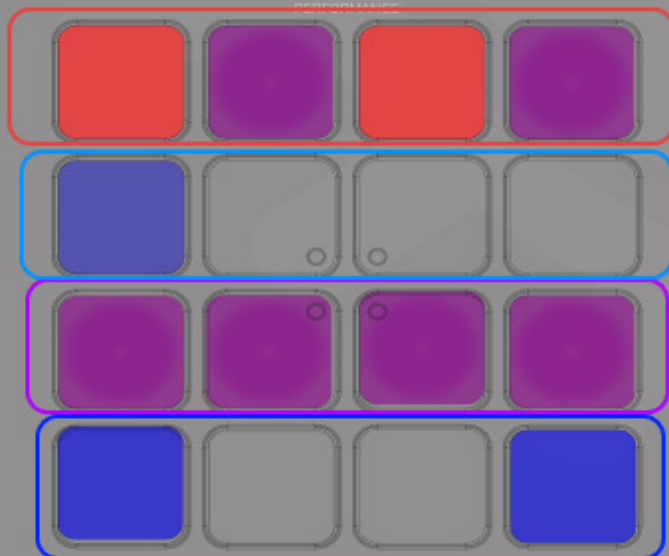
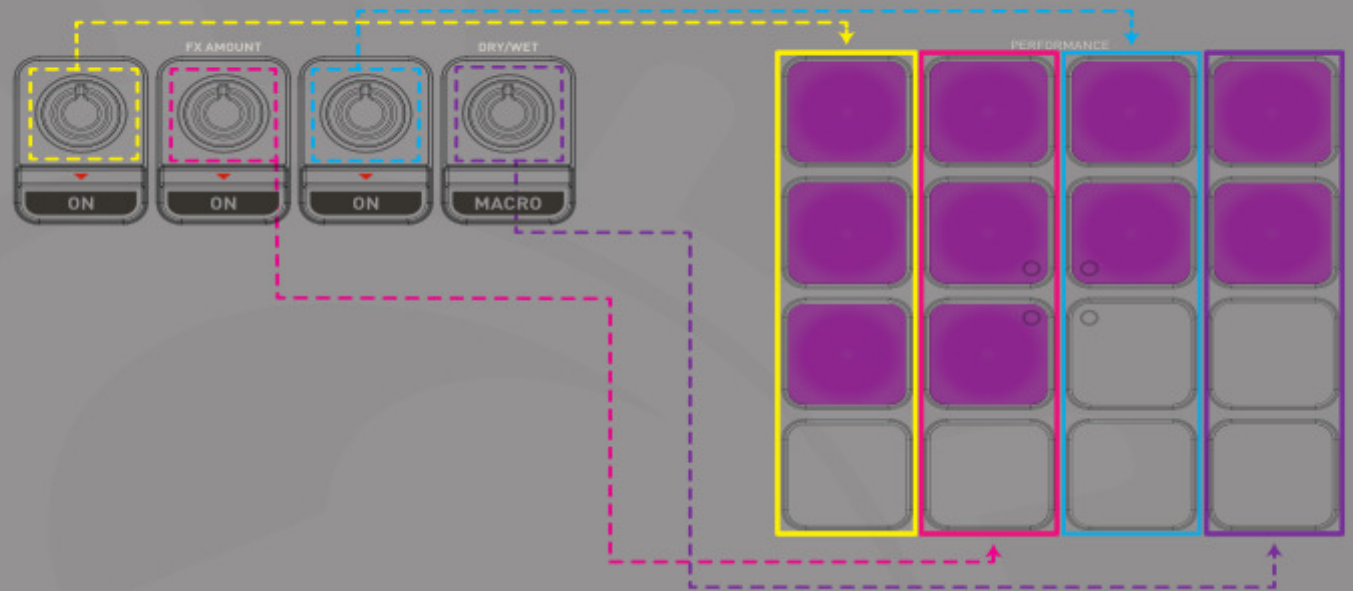
Freeze Slice Count Adjust:

1 / 2 / 4 / 8
16 / 32

PERFORMANCE PADS : SAMPLER

SHIFT +  = Adjust the Volume of a **Sample group**

SHIFT +  = Load Set from List



Slot Play Mode:  = Loop /  = One Shot

Loop Size Select + Set

Slot FX On/Off

Slot Mute On