

# CONTENTS

<b>CONTENTS</b> .....	<b>1</b>
<b>1. INTRODUCTION</b> .....	<b>2</b>
1.1. Box contents .....	2
1.2. Technical specifications .....	2
1.3. Recommendations .....	3
<b>2. INSTALLING YOUR XPS 2.0 60 SPEAKER KIT</b> .....	<b>3</b>
2.1. Positioning the speaker kit .....	3
2.2. Connections .....	4
2.2.1. <i>Connection to a PC</i> .....	5
2.2.2. <i>Connection to a television set equipped with a headphone jack</i> .....	6
2.2.3. <i>Connection to a DVD player/television set equipped with Left and Right audio outputs</i> .....	6
2.2.4. <i>Connection to a game console</i> .....	6
<b>3. USING YOUR XPS 2.0 60 SPEAKER KIT</b> .....	<b>7</b>
<b>4. TECHNICAL SUPPORT</b> .....	<b>7</b>
<b>5. WARRANTY</b> .....	<b>8</b>
<b>ENVIRONMENTAL PROTECTION RECOMMENDATION</b> .....	<b>8</b>

# 1. INTRODUCTION

## 1.1. Box contents

- 2 amplified satellite speakers
- 1 power adapter
- 1 male-male minijack cable
- 2 connection cables between the satellites (1.8m and 3m)
- User Manual

## 1.2. Technical specifications

Output power (effective power)	▪ Satellite speakers: 2 x 15W RMS
Total power	30W RMS
Frequency response	▪ Satellite speakers: 50 – 20kHz
Magnetic shielding	Magnetic shielding allowing for placement close to a monitor without disturbing the display
Features	<ul style="list-style-type: none"><li>▪ Right speaker:<ul style="list-style-type: none"><li>- 1 RCA type audio output to connect the left speaker</li><li>- 1 line in connector at the back for the main audio input</li><li>- 1 connector for the power adapter</li><li>- 1 auxiliary input and 1 headphone connector on the right side of the speaker</li><li>- 1 volume control knob with standby position</li><li>- 1 treble control knob</li><li>- 1 bass control knob</li></ul></li></ul>
For use with	PC, TV sets, DVD players, game consoles, CD-Audio, MP3 players

## 1.3. Recommendations

- Place your satellite speakers on a flat surface to avoid the risk of the speakers falling.
- Never open up your speaker kit, as you risk damaging its internal components.
- This speaker kit is intended for use in a temperate environment.
- To prevent the risk of fire or electrical discharge, keep your speaker kit away from:
  - rain or humidity, as well as all fluids (water, chemical products or any other liquids),
  - sources of heat such as heaters, stoves or any other heat-producing devices (including amplifiers),
  - direct sunlight.
- Do not expose your speaker kit to drips or splashes of water.
- Never place any object filled with liquid (a glass, vase...) on your speaker kit.
- **Warning :** The electrical consumption of this system in Standby mode is 1.5W.
- Unplug the speaker kit's power cord if you do not plan on using your speaker kit for an extended period of time. To disconnect the power cord, take hold of and pull on the plug; never pull on the cord itself.
- Make sure that the speaker kit's power plug connected to an electrical outlet remains easily accessible.
- Disconnect the speaker kit before cleaning. Use a damp cloth and avoid using aerosol cleaners.
- The speaker kit's power plug serves to power off the device and must therefore be easily accessible at all times.
- Attention: at full power, prolonged listening with headphones may cause damage to the user's ears and hearing.
- Markings are located on the back of the speakers.

## 2. INSTALLING YOUR XPS 2.0 60 SPEAKER KIT

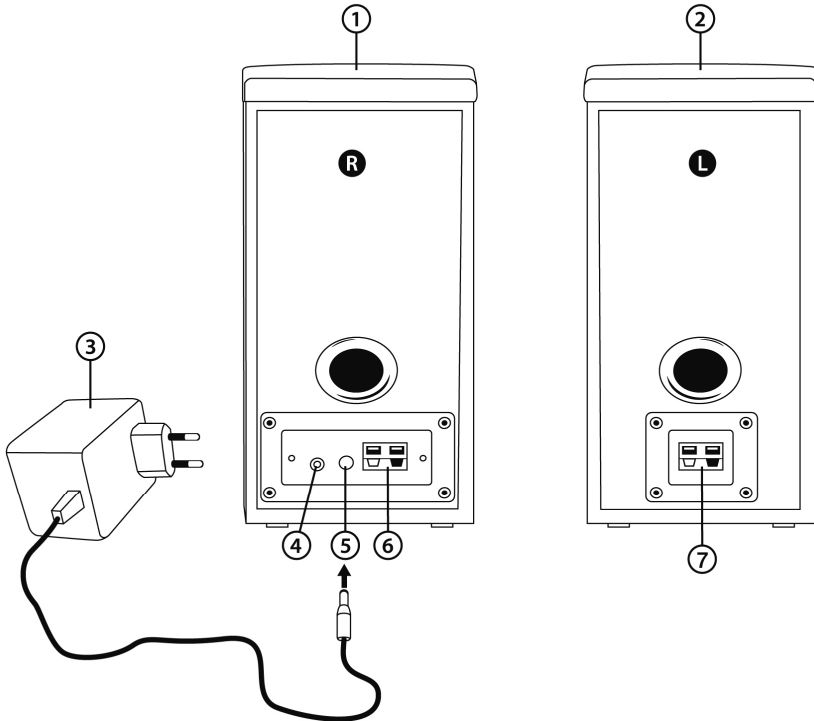
### 2.1. Positioning the speaker kit

1. Place the satellite speakers on a desk to either side of your monitor, keeping them at least 50cm away from the side walls.
2. Place the speakers at an equal distance from the listener and direct them towards the listening position.

## 2.2. Connections

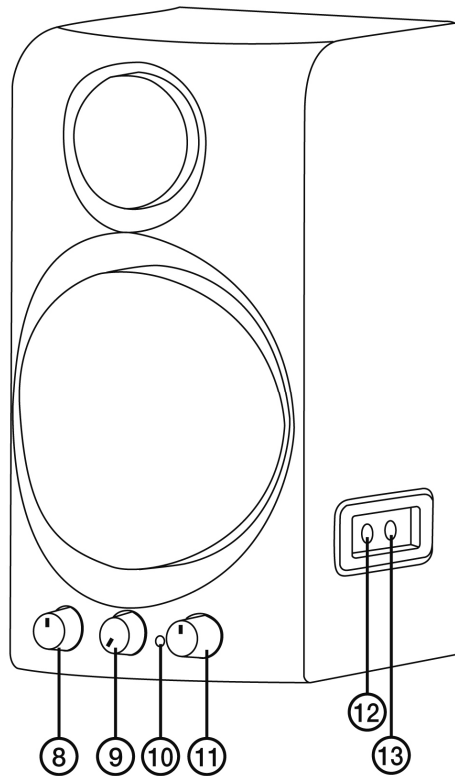
1. Switch off the audio source (PC, television set, DVD player or game console) to which you wish to connect your speaker kit.

- **General connection diagram:**



- 1: Right speaker
- 2: Left speaker
- 3: Power adapter
- 4: Connector for main audio input
- 5: Power connector
- 6: Connector for left satellite speaker cable
- 7: Connector for left satellite speaker

- Right satellite speaker with features:



8: Bass control

9: Master volume with standby position

10: Power LED

11: Treble control

12: Headphone connector (the speakers are automatically disabled when headphones are connected)

13: Auxiliary audio input, allowing you to connect an MP3 player or any other audio source

### 2.2.1. Connection to a PC

- Connect your speaker kit's main input (the connector on the back of the right satellite speaker) to the green FRONT SPEAKERS or FRONT OUT connector on your sound card or on the sound card integrated into your computer's motherboard. Use the included male-male minijack cable for this connection.

### 2.2.2. *Connection to a television set equipped with a headphone jack*

- Connect your speaker kit's main input (the connector on the back of the right satellite speaker) to the headphone jack on your television set.

### 2.2.3. *Connection to a DVD player/television set equipped with Left and Right audio outputs*

Requires a female minijack/double male RCA cable (not included – please see diagram 14A, below).

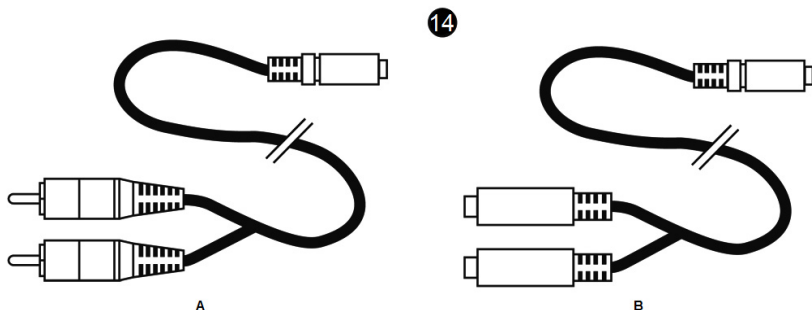
1. Connect your speaker kit's minijack connector to the female minijack/double male RCA cable.
2. Connect the white RCA connector on the female minijack/double male RCA cable to the corresponding audio output on your DVD player/television set.
3. Connect the red RCA connector on the female minijack/double male RCA cable to the corresponding audio output on your DVD player/television set.

### 2.2.4. *Connection to a game console*

Requires a female minijack/double female RCA cable (not included – please see diagram 14B, below).

1. Connect your speaker kit's minijack connector to the female minijack/double female RCA cable.
2. Connect the white and red audio connectors on your console's A/V cable to the female minijack/double female RCA cable.

Please refer to your console's user manual for more information on the other connections.



### 3. USING YOUR XPS 2.0 60 SPEAKER KIT

1. Switch on the audio source you wish to use (PC, television set, DVD player or game console).
2. Adjust the master volume (**Volume**) and the **Treble** and **Bass** controls on the right speaker.

Note: In order to determine the ideal settings for your speaker kit, put all of the settings to their minimum values and then progressively increase their intensity.



When you connect an audio source to the auxiliary audio input on the side of the right satellite speaker, the main audio source is disabled.



When you connect headphones to the headphone connector on the right satellite speaker, the satellite speakers are automatically cut off and only the headphone output is enabled.

### 4. TECHNICAL SUPPORT

If you encounter a problem with your product, please go to <http://ts.hercules.com> and select your language. From there you will be able to access various utilities (Frequently Asked Questions (FAQ), the latest versions of drivers and software) that may help to resolve your problem. If the problem persists, you can contact the Hercules products technical support service ("Technical Support"):

#### By email:

In order to take advantage of technical support by email, you must first register online. The information you provide will help the agents to resolve your problem more quickly.

Click **Registration** on the left-hand side of the Technical Support page and follow the on-screen instructions.

If you have already registered, fill in the **Username** and **Password** fields and then click **Login**.

#### By telephone:

<b>United Kingdom</b>	<b>08450800942</b> Charges at local rate	Monday to Friday from Noon to 4pm and 5pm to 10pm Saturday from 9am to Noon and 1pm to 7pm Sunday from 9am to Noon and 1pm to 4pm
<b>United States</b>	<b>1-866-889-5036</b> Free	Monday to Friday from 7am to 11am and from Noon to 5pm Saturday and Sunday from 7am to Noon (Eastern Standard Time)
<b>Canada</b>	<b>1-866-889-2181</b> Free	Monday to Friday from 7am to 11am and from Noon to 5pm Saturday and Sunday from 7am to Noon (Eastern Standard Time)
<b>Denmark</b>	<b>80887690</b> Free	Monday to Friday from 1pm to 5pm and 6pm to 11pm (English) Saturday from 9am to 1pm and 2pm to 8pm Sunday from 10am to 1pm and 2pm to 5pm
<b>Sweden</b>	<b>0200884567</b> Free	Monday to Friday from 1pm to 5pm and 6pm to 11pm (English) Saturday from 9am to 1pm and 2pm to 8pm Sunday from 10am to 1pm and 2pm to 5pm
<b>Finland</b>	<b>0800 913060</b> Free	Monday to Friday from 2pm to 6pm and 7pm to Midnight (English) Saturday from 10am to 2pm and 3pm to 9pm Sunday from 11am to 2pm and 3pm to 6pm

## 5. WARRANTY

Worldwide, Guillemot Corporation S.A. ("Guillemot") warrants to the consumer that this Hercules product will be free from material defects and manufacturing flaws for a period of two (2) years from the original date of purchase. Should the product appear to be defective during the warranty period, immediately contact Technical Support, who will indicate the procedure to follow. If the defect is confirmed, the product must be returned to its place of purchase (or any other location indicated by Technical Support).

Within the context of this warranty, the consumer's defective product will, at Technical Support's option, be either repaired or replaced. Where authorized by applicable law, the full liability of Guillemot and its subsidiaries (including for indirect damages) is limited to the repair or replacement of the Hercules product. The consumer's legal rights with respect to legislation applicable to the sale of consumer goods are not affected by this warranty.

This warranty shall not apply: (1) if the product has been modified, opened, altered, or has suffered damage as a result of inappropriate or abusive use, negligence, an accident, normal wear, or any other cause not related to a material defect or manufacturing flaw; (2) in the event of failure to comply with the instructions provided by Technical Support; (3) to software not published by Guillemot, said software being subject to a specific warranty provided by its publisher.

### ADDITIONAL WARRANTY PROVISIONS

In the United States of America and in Canada, this warranty is limited to the product's internal mechanism and external housing. Any applicable implied warranties, including warranties of merchantability and fitness for a particular purpose, are hereby limited to two (2) years from the date of purchase and are subject to the conditions set forth in this limited warranty. In no event shall Guillemot Corporation S.A. or its affiliates be liable for consequential or incidental damage resulting from the breach of any express or implied warranties. Some States/Provinces do not allow limitation on how long an implied warranty lasts or exclusion or limitation of incidental/consequential damages, so the above limitation may not apply to you. This warranty gives you specific legal rights, and you may also have other legal rights which vary from State to State or Province to Province.

### Copyright

© 2008 Guillemot Corporation S.A. All rights reserved.

Guillemot™ and Hercules® are trademarks and/or registered trademarks of Guillemot Corporation S.A. All other trademarks and brand names are hereby acknowledged and are property of their respective owners. Illustrations not binding. Contents, designs and specifications are subject to change without notice and may vary from one country to another.

### ENVIRONMENTAL PROTECTION RECOMMENDATION



At the end of its working life, this product should not be disposed of with standard household waste, but rather dropped off at a collection point for the disposal of Waste Electrical and Electronic Equipment (WEEE) for recycling.

This is confirmed by the symbol found on the product, user manual or packaging.

Depending on their characteristics, the materials may be recycled. Through recycling and other forms of processing Waste Electrical and Electronic Equipment, you can make a significant contribution towards helping to protect the environment.

**Please contact your local authorities for information on the collection point nearest you.**