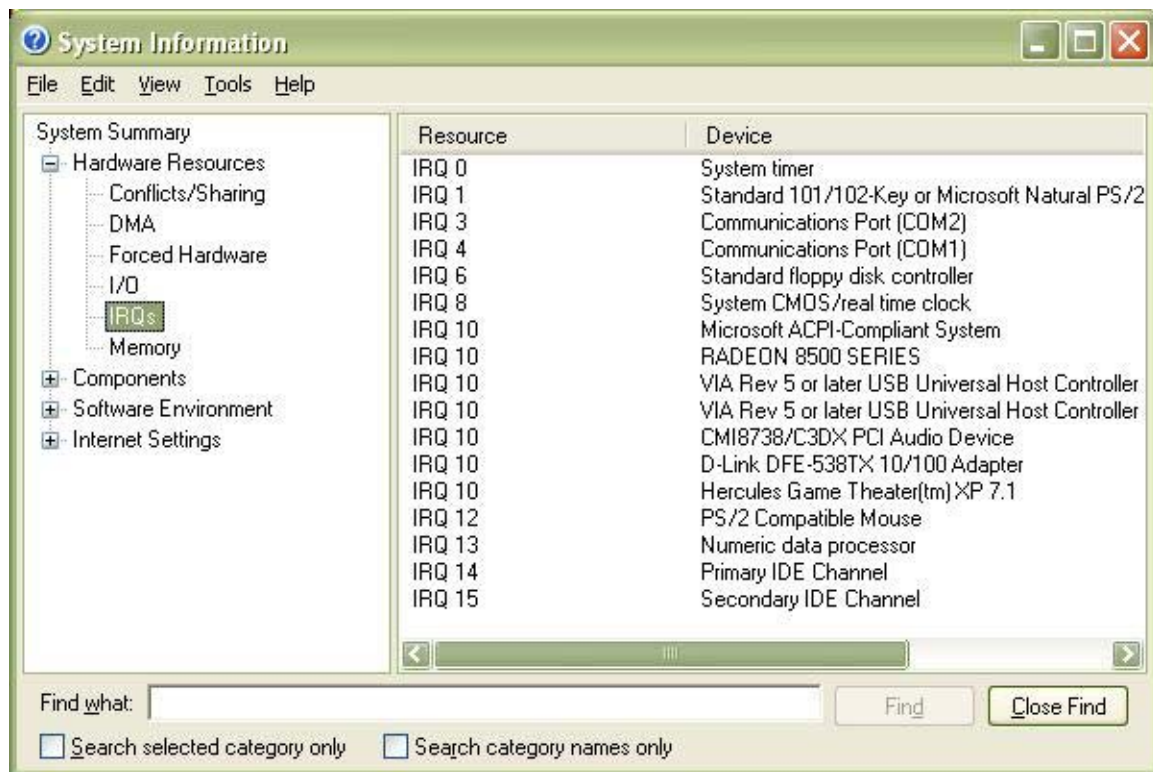


The computer crashes when I use certain software.

Make sure that the sound card is not sharing its IRQ with another device:

- Click on **Start/RUN**
- Type **MSINFO32**
- Open **Hardware Resources**.
- Select **IRQs**.



A list of IRQs used by the different devices installed on your PC will be displayed.

Make sure that your sound card is not sharing a number with one or many other devices (as the example above).

If it is sharing its IRQ with another device, modify the IRQ used by your sound card either by changing its PCI position or by exchanging the IRQ with the PCI position used by the card in the computer's BIOS. Please refer to your motherboard's user manual for more information.

If the card is not sharing its IRQ, make sure that none of the other boards in your computer are sharing their IRQs (verify the graphics board in particular and also the board used by the software). Also make sure that the drivers for all your boards have been updated.

If the problem continues, update the motherboard's BIOS as well as its chipset drivers.