


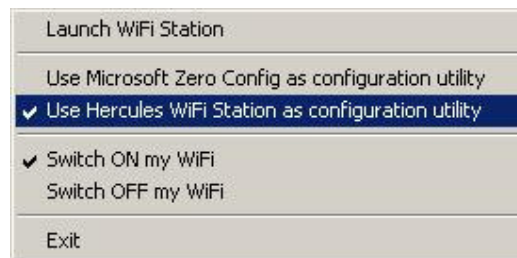
How to set up a network using a Hercules WiFi adapter and an Inventel or Sagem modem router (from Tiscali, Wanadoo - Livebox or Cegetel)?

First, please make sure that your modem router is in "**Pairing mode**" by pressing the WiFi button on the side of the unit. The modem router will stay in "Pairing mode" for 10 minutes, during which time the WiFi led will be blinking.

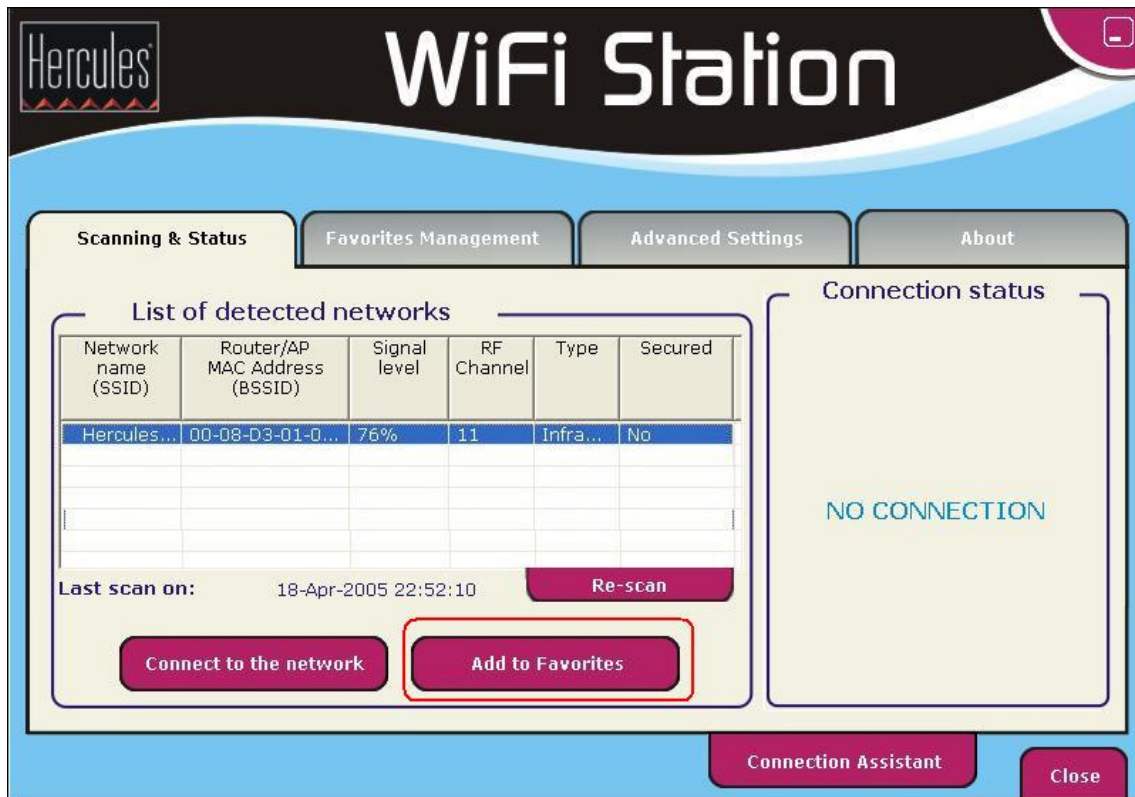
Note:

For Livebox Inventel the button is above the USB port and for Livebox Sagem, on the left of the electrical connector.

Now launch the **WiFi Station** and make sure that the options "**Use Hercules WiFi Station as configuration utility**" and "**Switch on my WiFi**" are checked. For that you have to right click on the WiFi Station Icon  from the task bar.



In the first tab "**Scanning & Status**", click the "**Re-scan**" button and select your network. Add it to Favorites by choosing the "**Add to favorites**" button.



Follow the steps for adding the network to **Favorites** and make sure you have checked the **Network name (SSID)**, the **Type of network** (Infrastructure) and the **Security type** (you can enter here the security key if your network is secured).



Save the configuration and **Re-scan** the network then connect to your favourite network. Now your WiFi connection is properly configured.

Should you encounter difficulties in connecting to the network, please check also the followings:

- the modem router is still in Pairing mode
- the SSID is correct
- the security type chosen corresponds to your modem settings and has been correctly inserted
- the modem has disabled the MAC address filtering option.