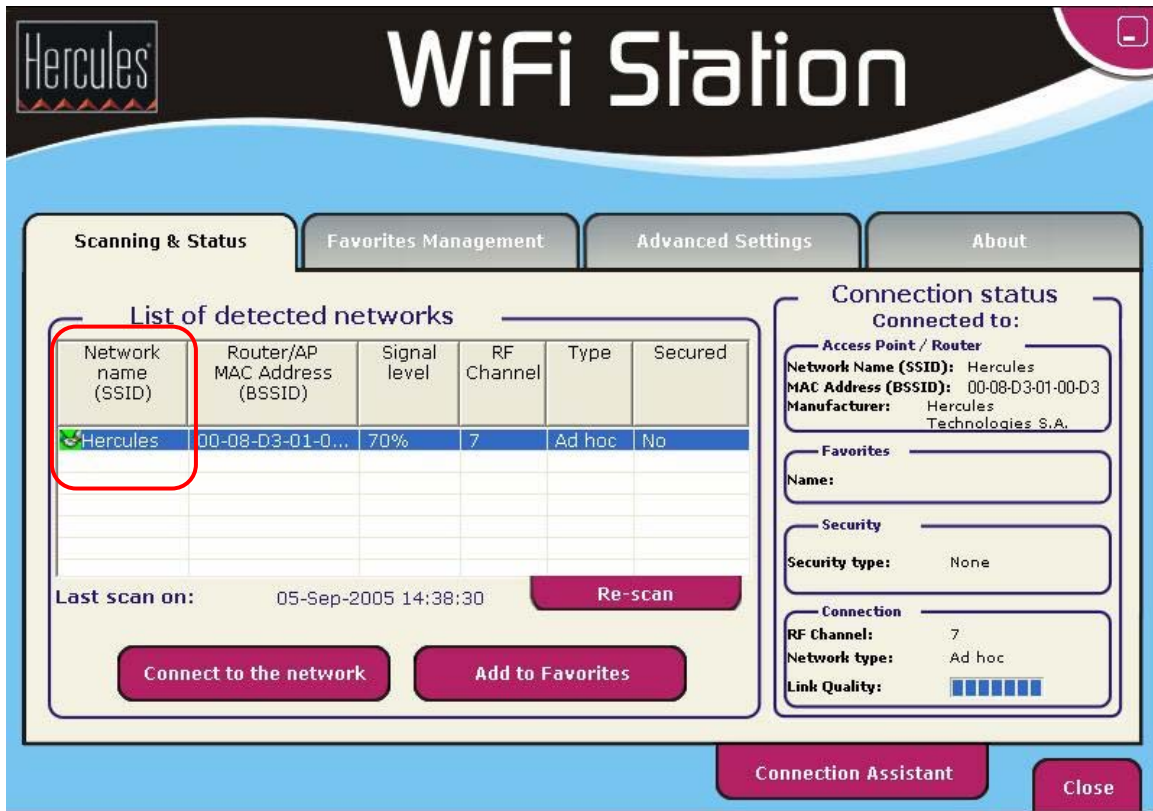


I'm connected via WiFi (Ad hoc mode) but can't access the Internet.

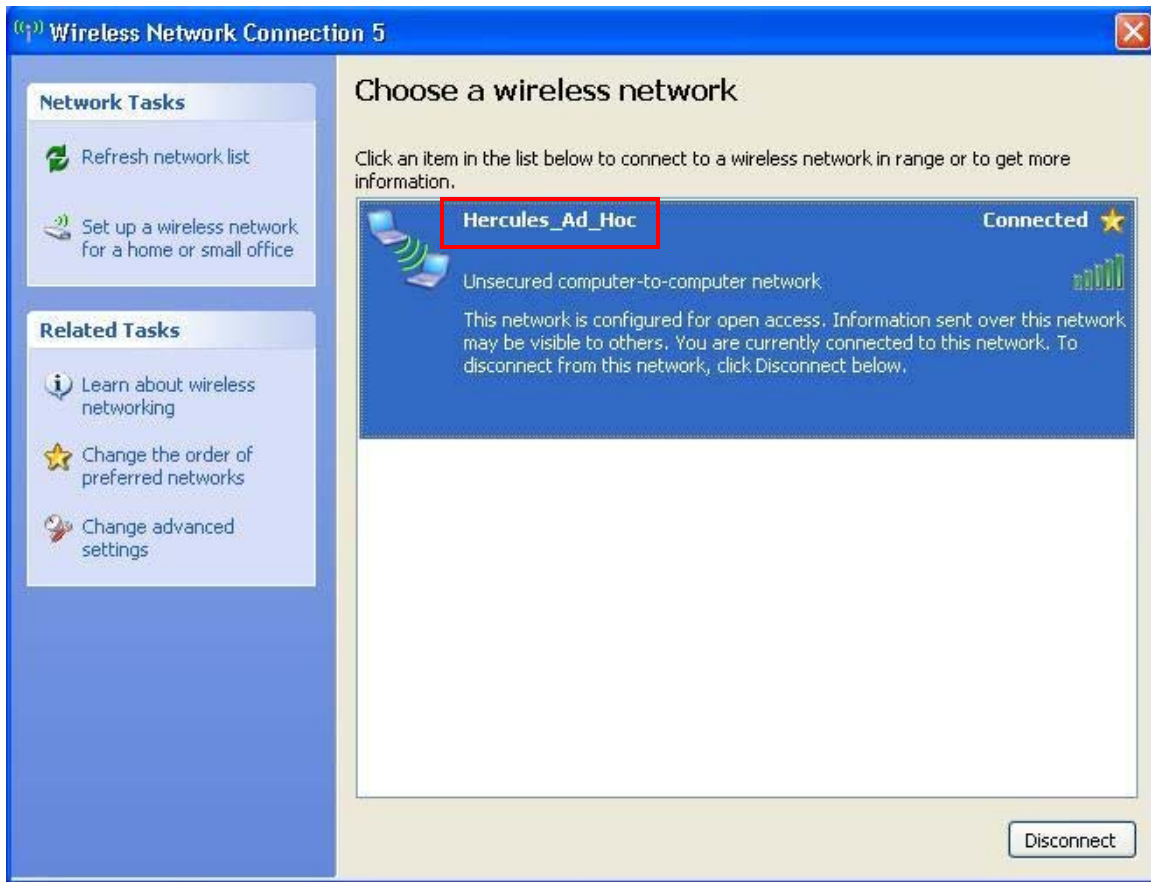
If you are unable to access the Internet on one of the computers in your Ad hoc network, please verify the following points:

1. Ensure that all computers in the network are connected to the same Ad hoc network. To do so, verify the network name (or SSID) as well as the network type of all computers.

If you are using WiFi Station, you will find the network name indicated in the first tab ("Scanning & Status").



If you are using the Windows utility, you will find the network name indicated in bold as in the following image:



2. Verify that you have properly followed the instructions in the manual regarding sharing an Internet connection, corresponding to your operating system (chapter 6, *"Welcome to the Wireless Attitude"*).
3. Verify the workgroup name for each computer in the network: the name must be identical for all computers. To find out how to verify the workgroup name, please refer to the FAQ *"How can I find and change the name of my computer and the name of my workgroup?"* corresponding to your operating system.
4. Verify the IP addresses assigned to your computers and carry out a Ping test. To verify the IP addresses, please refer to the FAQ *"How can I find out my computer's IP address?"* and for the Ping test, please refer to the FAQ *"How can I carry out a 'Ping' test?"*.

Attention:

The computer directly connected to the Internet should not have any address in the *"Default gateway"* section, while on the computer receiving access, the IP address of the directly connected computer should appear in the *"Default gateway"* section.

5. On a system running Windows XP, you should also disable the Windows Firewall. To do so, click *"Start/Settings/Control Panel"*. Double-click the *"Security Center"* icon and select to turn off the Windows Firewall. If you are using other firewalls, please refer to their documentation for details on how to turn them off as well.

