

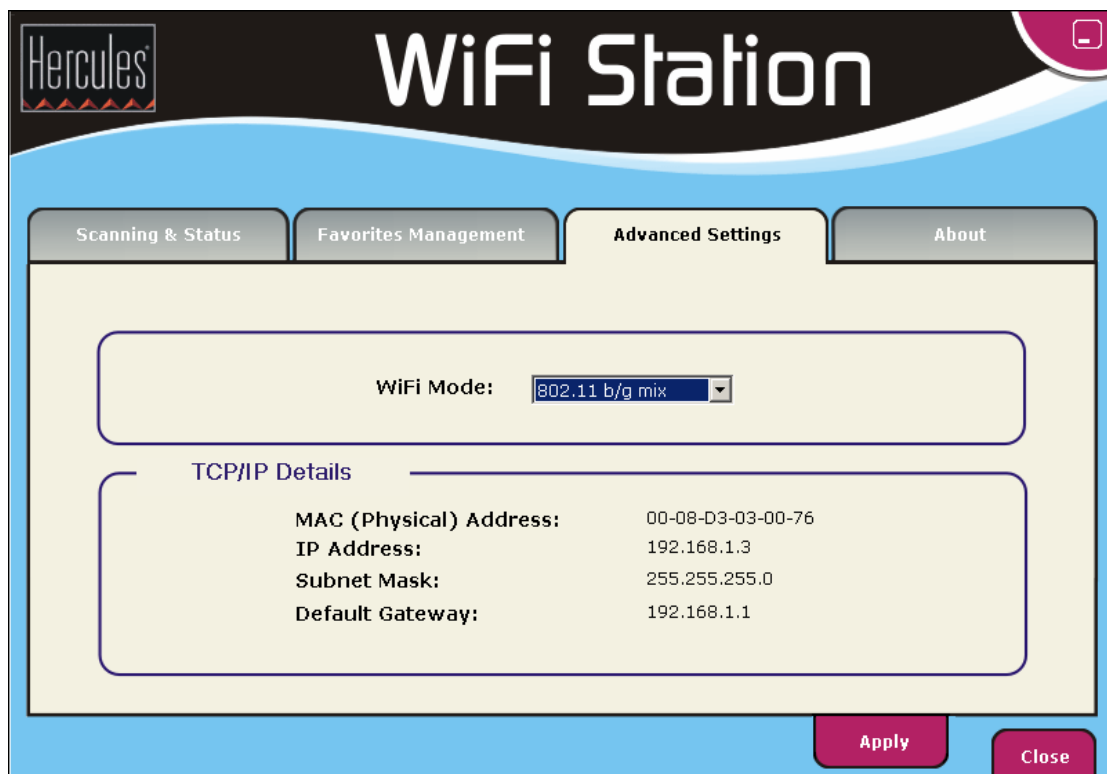
## How can I find out my computer's IP address on a system running Windows Millennium?

There are two ways to find out the IP address assigned to your computer:



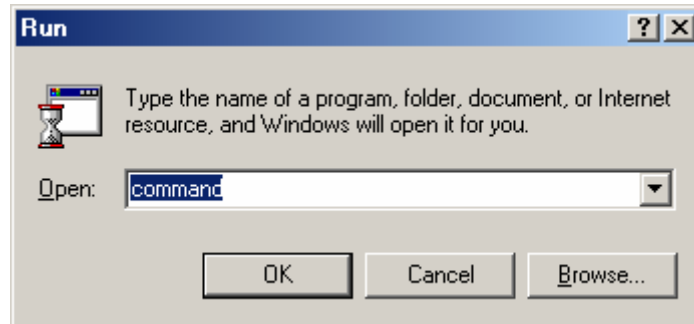
These operations require that you be connected to a WiFi network. Moreover, if you are connected to an Ad hoc network, it is possible that you have no default gateway.

1. In WiFi Station, your Hercules WiFi adapter's utility application, select the third tab ("*Advanced Settings*"). Here you will find your IP address and default gateway listed.

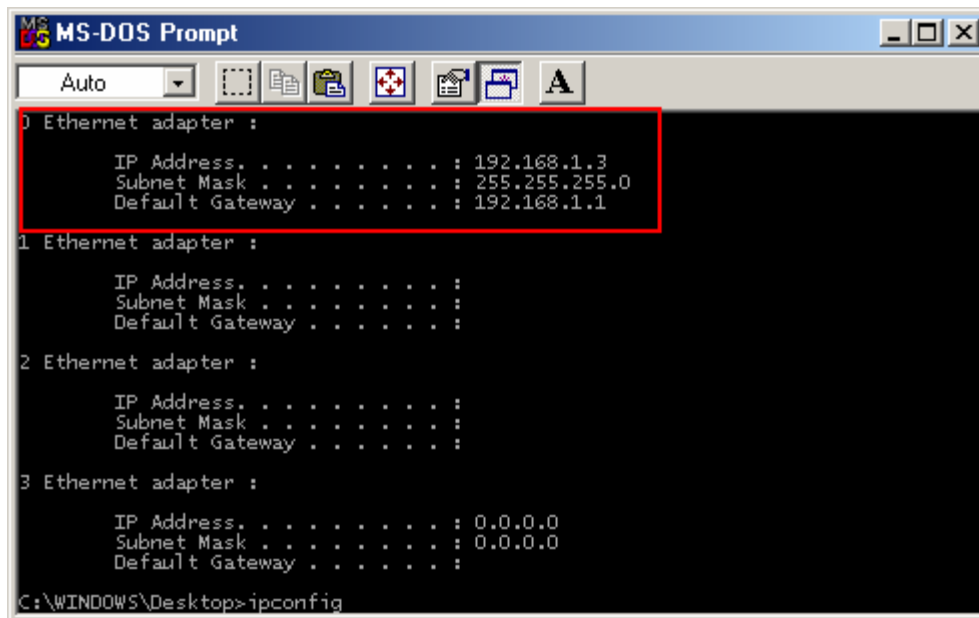


2. Another way to verify the IP address assigned to your computer is to use the Windows Run command.

Click "Start/Run", enter "command" and then click "OK".



In the window that is displayed, enter the command "ipconfig" and then press the "Enter" key.



You will then see details of your IP address for your wireless network, as well as the default gateway assigned.



Please be sure to distinguish between the types of network displayed. For your WiFi connection you must refer to the network with the default gateway: "192.168.1.1".