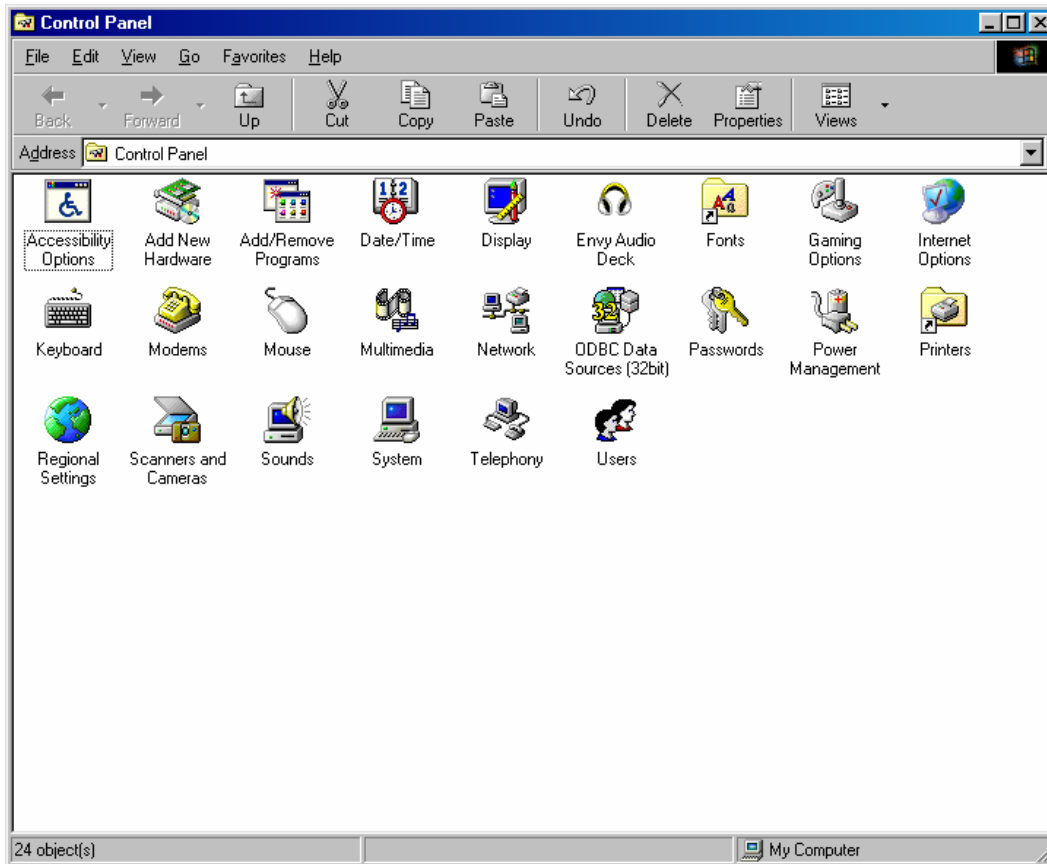


## How can I manually assign an IP address to my computer on a system running Windows 98SE?

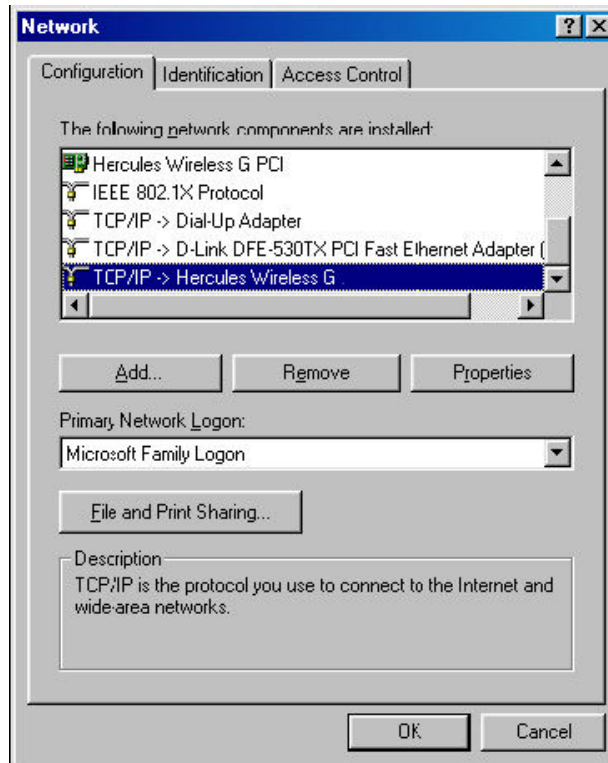
To change the configuration of your IP address on a system running Windows 98SE, go to your system's "Control Panel". To do so, click "Start/Settings/Control Panel". Double-click the "Network" icon.



In the "Network" window, select the "Configuration" tab. Select the "TCP/IP -> Hercules Wireless G" network component and then click "Properties".

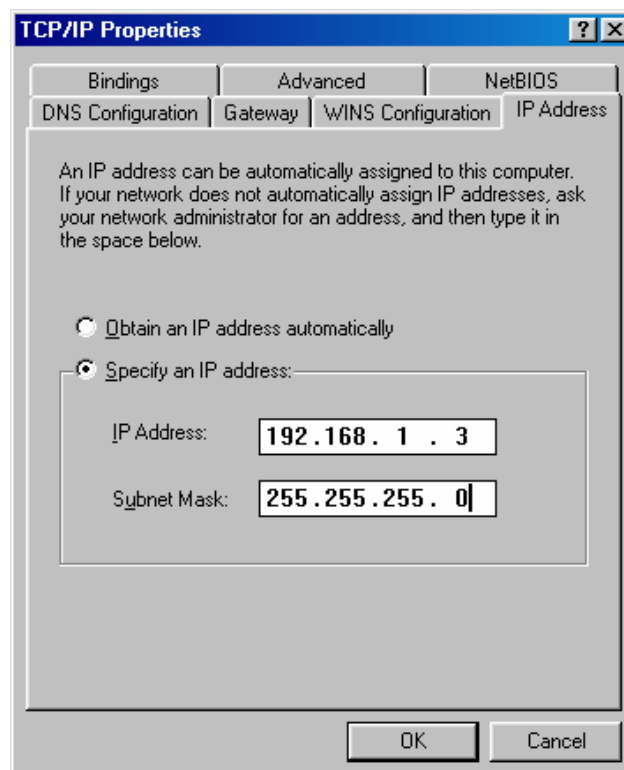


The "TCP/IP -> Hercules Wireless G" option may appear differently, depending on the Hercules product installed on your system. For a PCI card, the option will appear as "TCP/IP -> Hercules Wireless G PCI", for a PCMCIA card it will appear as "TCP/IP -> Hercules Wireless G PCMCIA" and for a USB adapter it will appear as "TCP/IP -> Hercules Wireless G USB2".

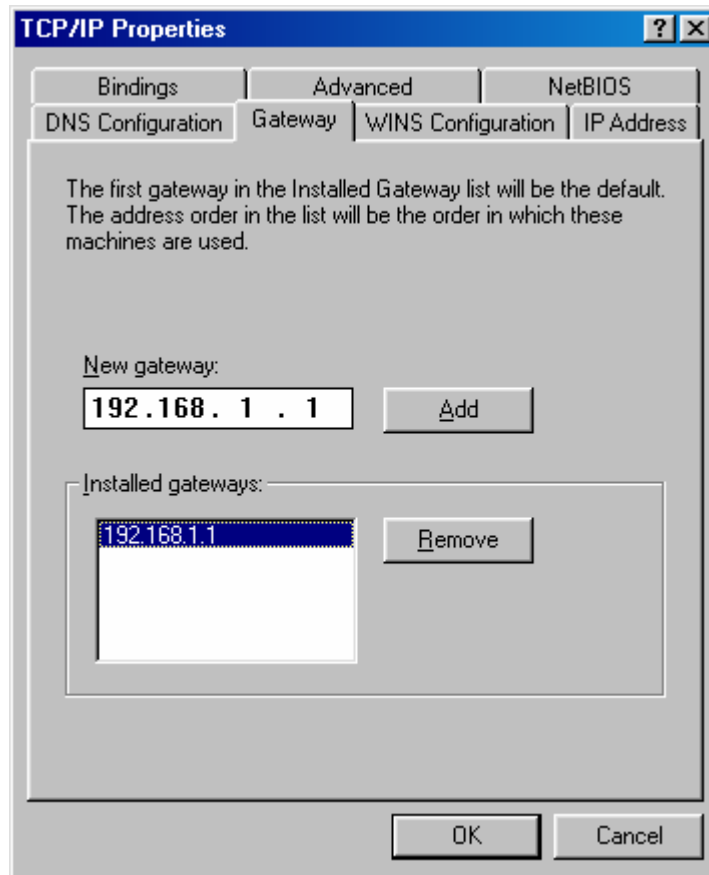


In the "IP Address" tab, select the "Specify an IP address" option.

We recommend that you select "192.168.1.x" for your IP address (replace the "x" with a number between 2 and 254) and "255.255.255.0" for your Subnet mask.



In the "Gateway" tab, enter "192.168.1.1" (the Hercules Modem router's default address) and click "Add".



Validate the changes by clicking "OK" and then restart your computer.