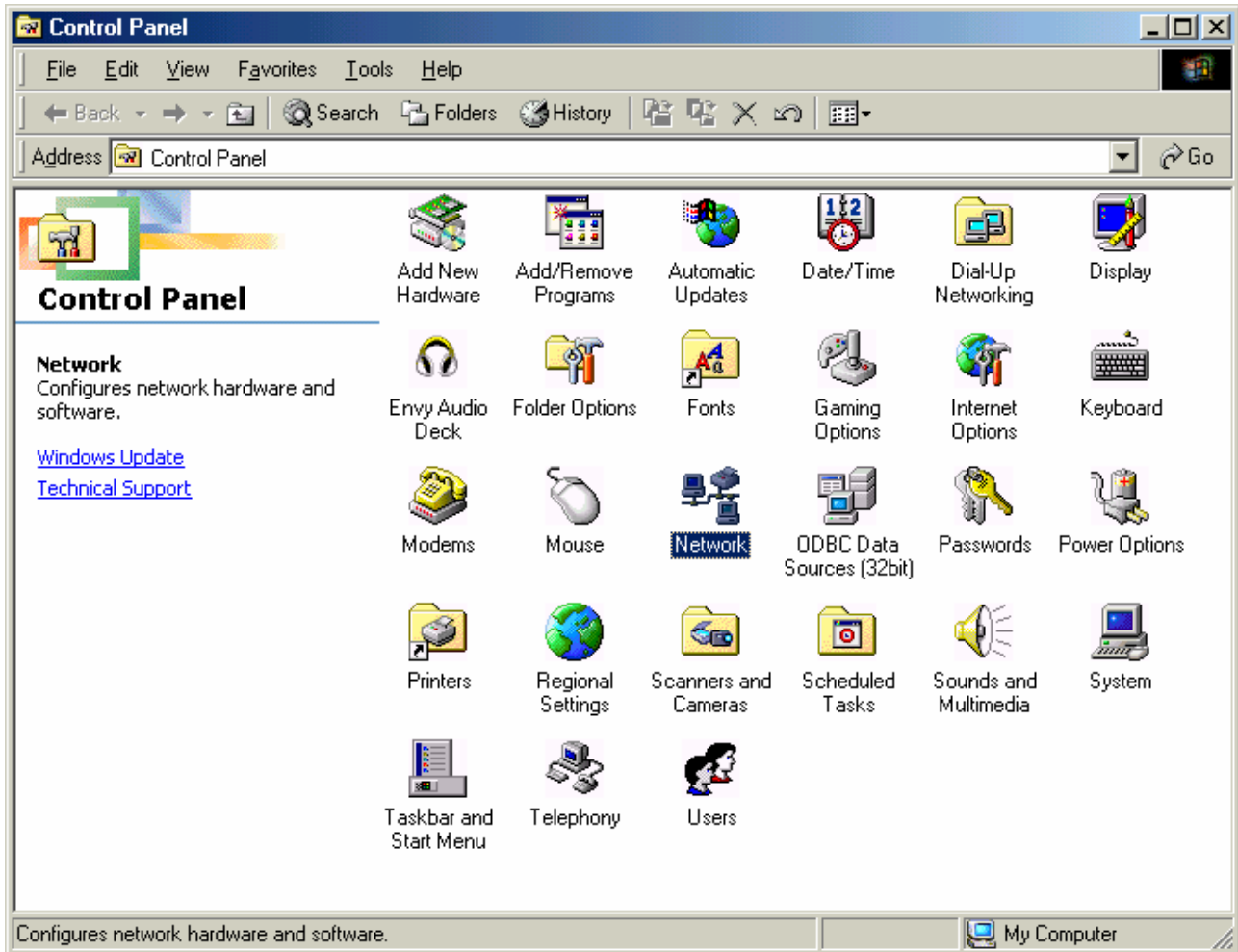


How can I manually assign an IP address to my computer on a system running Windows Millennium?

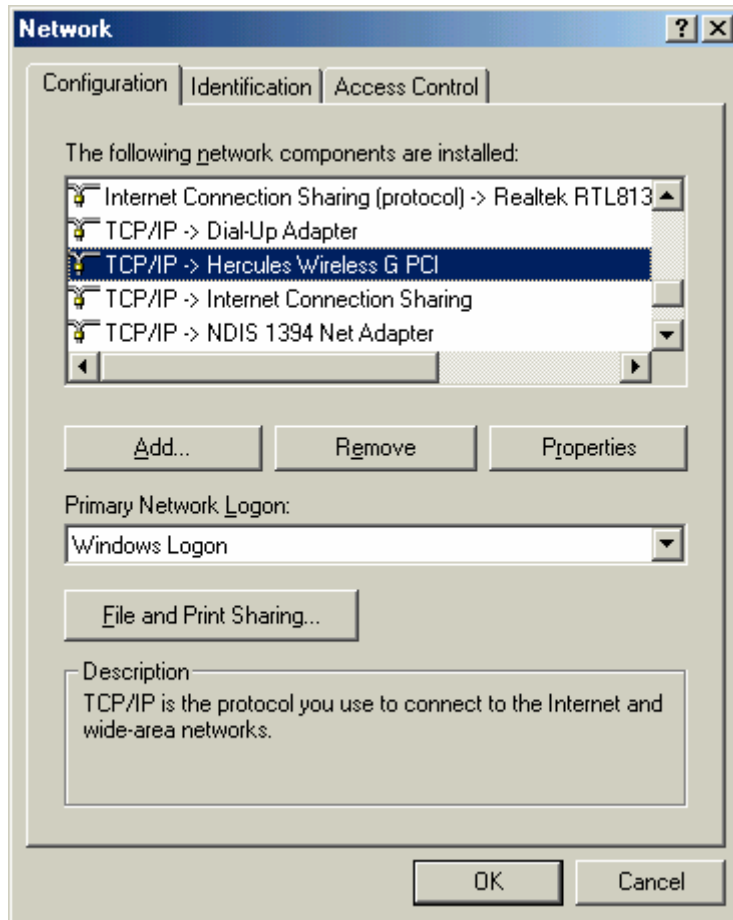
To change the configuration of your IP address, go to your system's "Control Panel". To do so, click "Start/Settings/Control Panel". Double-click the "Network" icon.



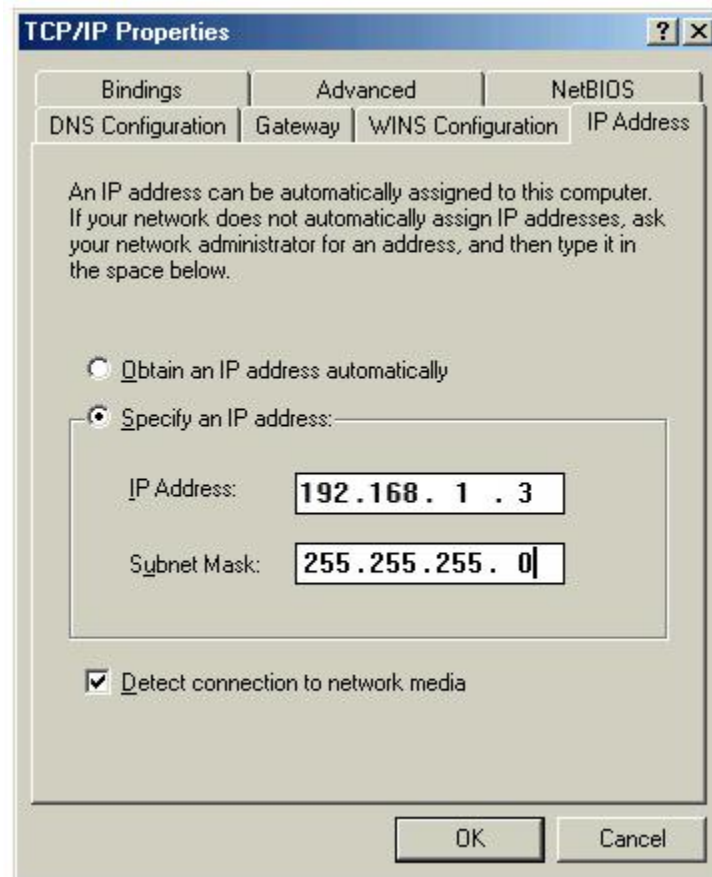
In the "Network" window, select the "Configuration" tab. Select the "TCP/IP -> Hercules Wireless G" network component and then click "Properties".



The "TCP/IP -> Hercules Wireless G" option may appear differently, depending on the Hercules product installed on your system. For a PCI card, the option will appear as "TCP/IP -> Hercules Wireless G PCI", for a PCMCIA card it will appear as "TCP/IP -> Hercules Wireless G PCMCIA" and for a USB key it will appear as "TCP/IP -> Hercules Wireless G USB2".

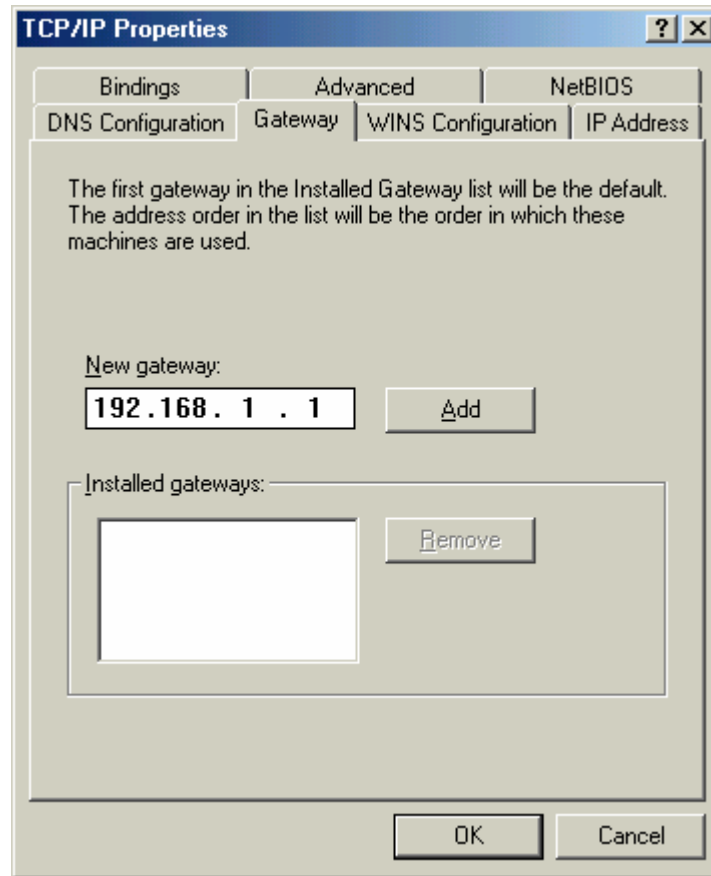


In the "IP Address" tab, select the "Specify an IP address" option.



We recommend that you select "192.168.1.x" for your IP address (replace the "x" with a number between 2 and 254) and "255.255.255.0" for your Subnet mask.

In the "Gateway" tab, enter "192.168.1.1" (the Hercules Modem router's default address) and click "Add".



Validate the changes by clicking "OK" and then restart your computer.