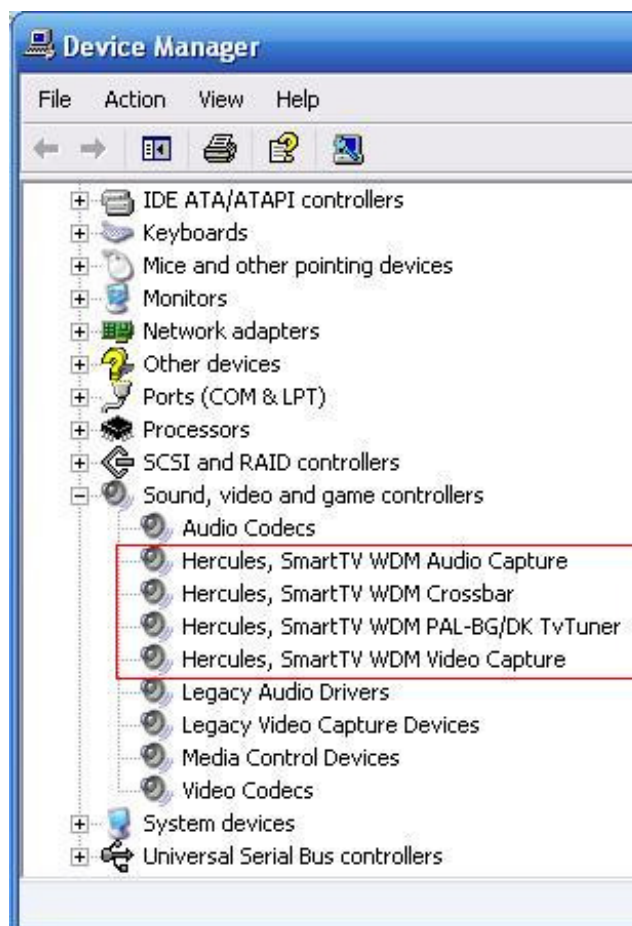


## How can I verify that the Smart TV/Smart TV 2 card has been installed correctly on my computer?

You can check that it is the case from Windows Device Manager:

- Right click on **MY COMPUTER** icon on your desktop and select **Properties**
- If you are using Win 98 or ME: Select the **Device Manager** tab
- If you are using Win 2000 or XP: Select the **Hardware** tab, then click on the **Device Manager** button

Under **SOUND VIDEO AND GAME CONTROLLERS**, you should normally get the following:



NOTE: The "TvTuner" denomination may vary according to your card model.