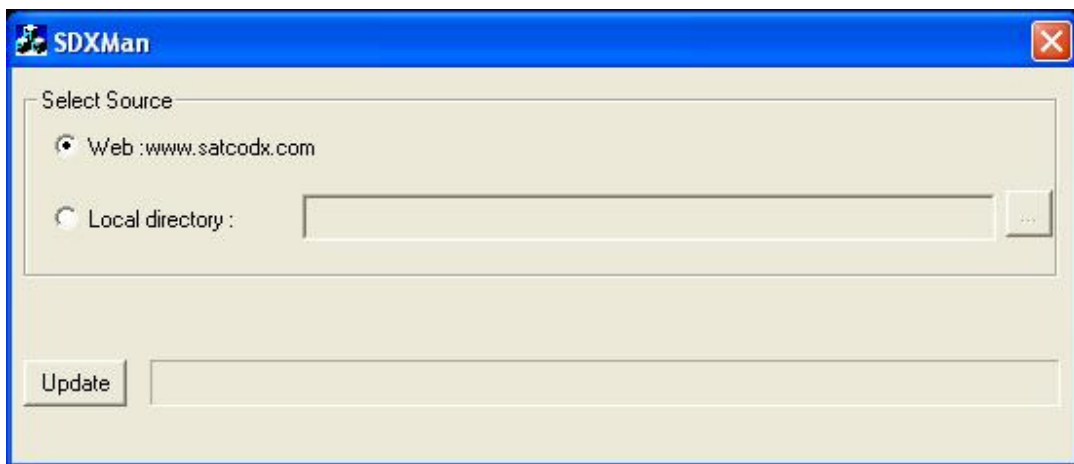


How can I update the information related to the Satellite?

First, make sure to apply the latest updates for your card (V2.0, then v3.0), available from our support site.

Once done, run the **SDXman** (Program menu > Smart TV Satellite) in order to update the satellite information (an internet connection is required).



You can either proceed directly via Internet (recommended), or manually select a local directory where the files are located (if your computer is not connected to a network for example).