

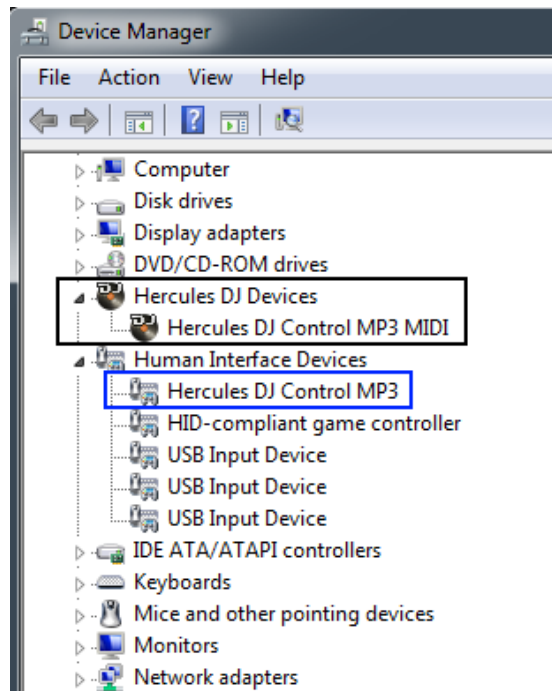
How can I verify that my DJ Control MP3 is correctly installed on my PC?

First, we recommend that you use the latest driver version available from our web site to proceed to the installation.

Once connected and installed, the DJ Console should normally be enumerated under Device Manager:

- Right click on **COMPUTER** icon on your desktop and select **Manage**
- From the left column, click on **Device Manager**

The different elements of the DJ Console should normally appear in the following categories:



NOTE: If **Hercules DJ Control MP3** (here in blue) is rather recognized as another **USB Human Interface Device**, you will not be able to use the DJ Control as a MIDI controller.

Be sure to always connect your DJ Control to the same USB port. Otherwise, you will need to reinstall the driver.



The **DJ Console Control Panel** should appear in the notification area (near the clock). It can also be accessed from Windows **Control Panel**.



It provides information about the drivers currently installed. If you ever need to contact our technical support, be sure to have this information at hand.

