

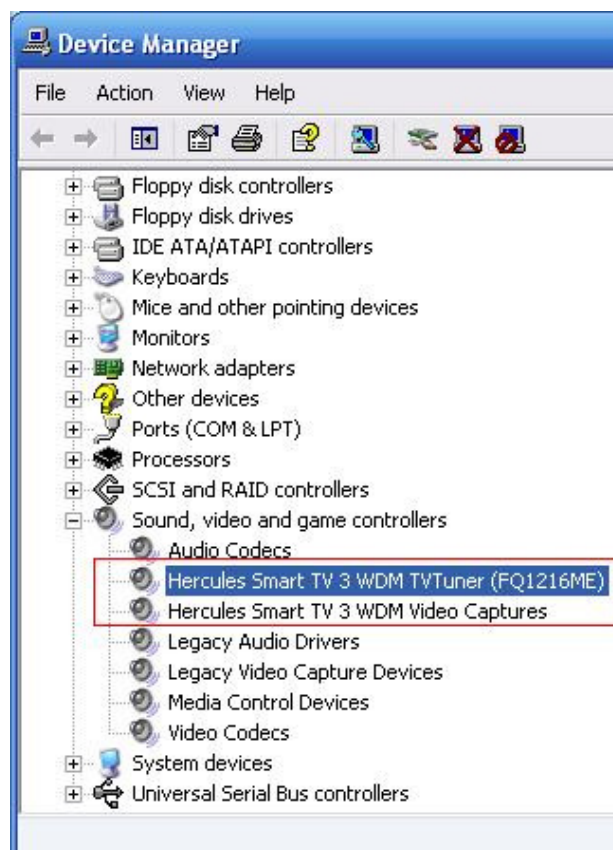
Where can I find the serial number for Win DVR?

If you are asked to enter a serial number during the installation of Win DVR, it means that your card has not been installed correctly.

Please reinstall your **Smart TV** card, making sure it is correctly recognized afterward in Windows **Device Manager**:

- Right click on **MY COMPUTER** icon on your desktop and select **Properties**
- If you are using Win 98 or ME: Select the **Device Manager** tab
- If you are using Win 2000 or XP: Select the **Hardware** tab, then click on the **Device Manager** button

Under **SOUND VIDEO AND GAME CONTROLLERS**, you should normally get the following:



NOTE: The "TvTuner" denomination may vary according to your card model.

Once done, proceed to installing Win DVR again.