

Hercules Muse Pocket / Muse Pocket Lt in Windows® Vista™ 32-bit

Hercules Muse Pocket and Muse Pocket LT are compatible with Windows® Vista™ 32-bit since they use Windows Vista standard USB Audio drivers.

To use Hercules Muse Pocket or Hercules Muse Pocket Lt in Windows Vista 32-bit, you only have to plug your Muse Pocket on your PC in Windows Vista 32-bit, and it works.

a) Enable the line input

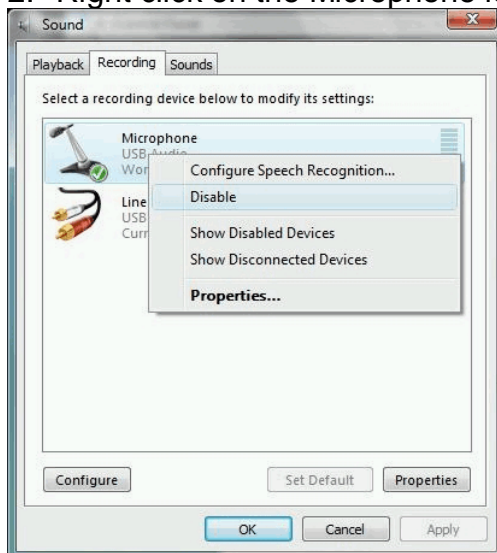
By default, the microphone input is enabled and the line input is disabled.

To enable the line input, you must disable the Microphone input.

1. Click on Windows Button > Settings > Control Panel > Sound > Recording



2. Right click on the Microphone logo to call the menu and choose « Disable »



3. The Line input is enabled as soon as the microphone input is disabled.

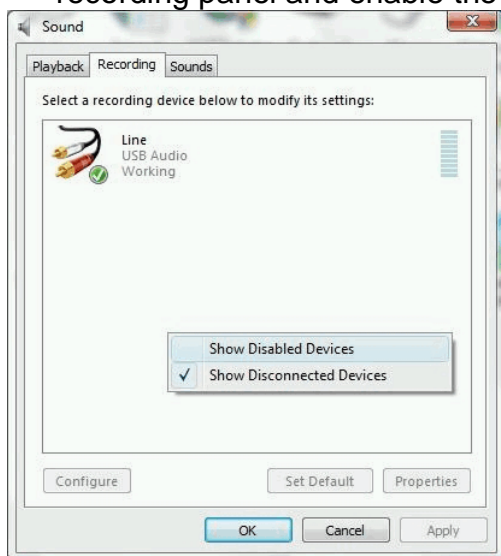


4. You can now use the line input.

Remark: while the line input works as an audio source, you will not hear the line input monitoring, so while you will record, you won't hear the recorded source via the line input.

b) Enable the microphone input

1. If you don't see the microphone input on the recording panel, right click on the recording panel and enable the option "Show Disabled Devices".



2. Once you see the microphone device, right click on it and choose the option "Enable".



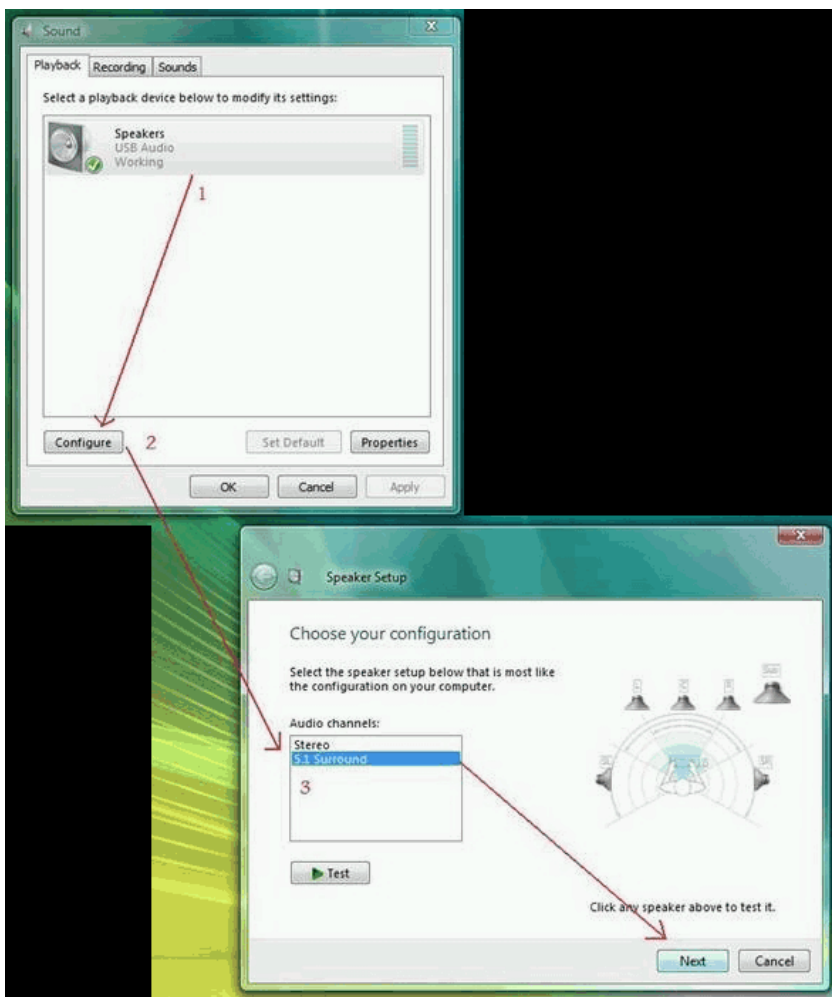
3. The microphone input is now ready for use.



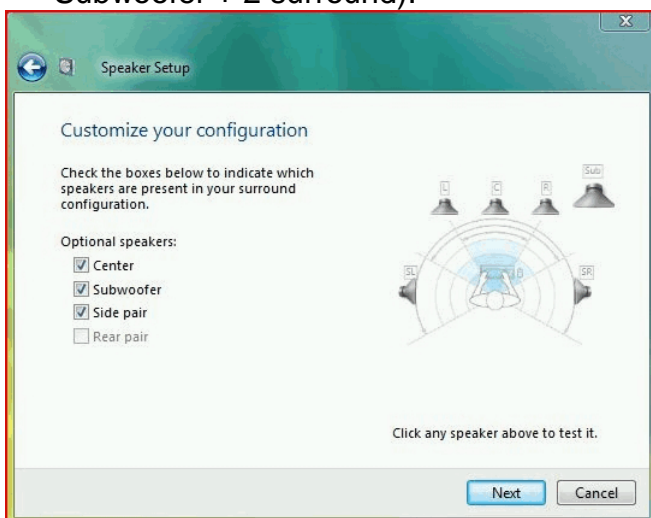
c) Set the surround mode

The default mode of Muse Pocket and Muse Pocket Lt is stereo, so if you want to use it in multiple channel (surround) mode, you must change its playback mode.

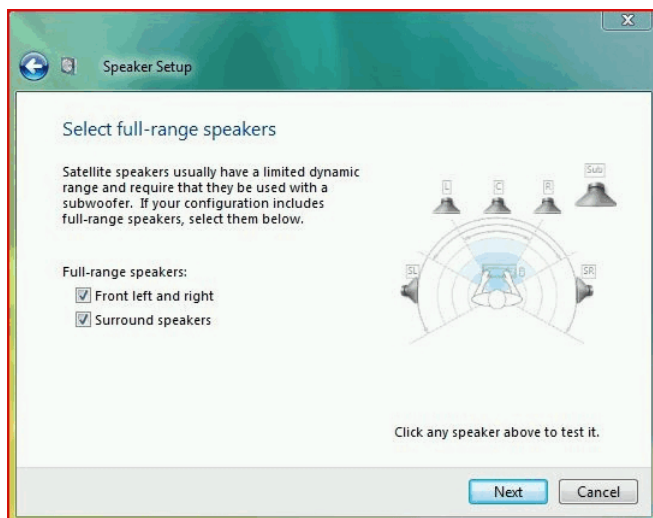
1. Click on Windows Button > Settings > Control Panel > Sound > Playback. The USB sound card outputs are listed as Speakers / USB Audio
2. Click on the Configure button
3. In the following screen, Speaker Setup, choose the configuration as 5.1 Surround.



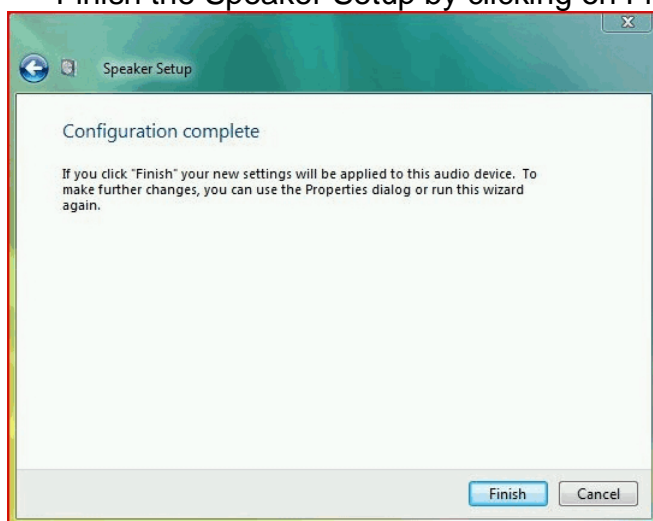
4. Click on the button Next for the following menu
5. You can then customize your configuration to set how many speakers you have (4 speakers = 2 Front + 2 surround / 5.1 = 2 Front + 1 Center + 1 Subwoofer + 2 surround).



6. You cannot set rear speakers as it would have requested a 7.1 sound card instead of a 5.1 sound card.
7. If you have only a 4-channel system, you can disable the Center and Subwoofer option.



8. Once you have settled your speaker positions, you click on Next and you Finish the Speaker Setup by clicking on Finish.



The Speaker Setup is complete: your speaker configuration is set.

d) Questions

i) **Are Hercules Muse Pocket Lt Volume + and Volume – buttons active in Windows Vista 32-bit?**

Yes.

ii) **Is Hercules Muse Pocket Volume and Mute rotary button active in Windows Vista 32-bit?**

Yes.