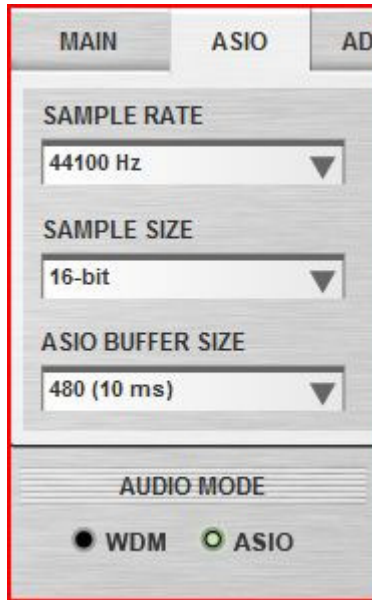


Configuring Traktor 2.5 for the DJ Console Rmx (Windows version)

1- Configuration of the ASIO driver/ MIDI channel



a) From the DJ Console control panel, set the audio mode to **ASIO**

b) Click the **ASIO** tab and configure the various driver settings to be used by Traktor.

NOTE: These settings cannot be modified once Traktor has been launched.

c) Next, go to the **ADVANCED** tab, and make sure that MIDI channel is set to **1**.

This is very important as the TKS file provided is configured for the DJ Console Rmx to work on this channel.

If you have multiple MIDI controllers, or would like to use the DJ Console on a different MIDI channel, you will need to modify the TKS file accordingly. Consult Traktor's user manual for more details.



2- Audio configuration in Traktor

a) To access Traktor's configuration menu, click **SETUP**

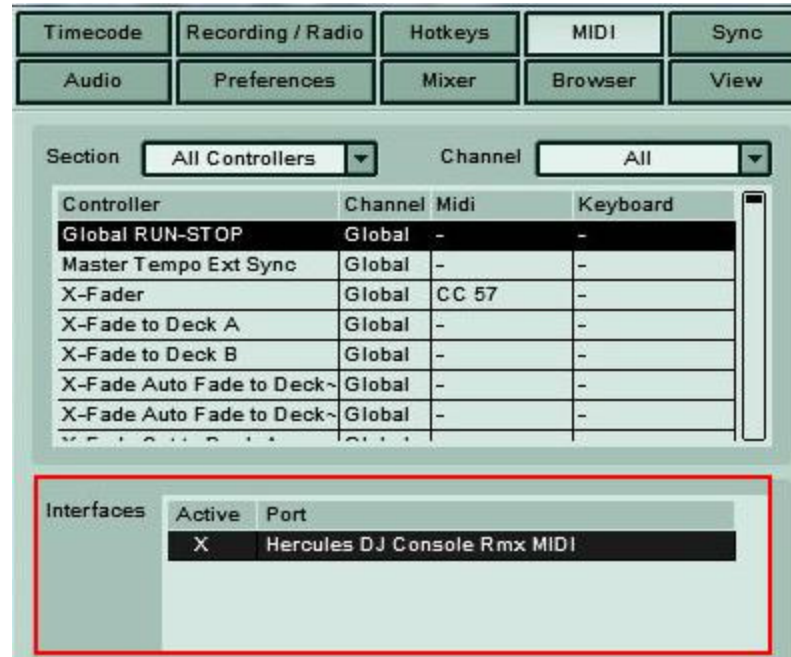
b) In **AUDIO**, select **Hercules DJ Console Rmx ASIO** as **Audio Device**. Notice that the **SAMPLE RATE** and **AUDIO LATENCY** should reflect the configuration previously made in the Control panel



c) Under **Output Channel Routing**, set Output 3 & 4 for **Headphone** and Output 1 & 2 for **Master**

3- Configuration of the Midi controllers in Traktor

- a. Then, select the **MIDI** menu. Make sure **Hercules DJ Console Rmx MIDI** is marked with an **X** in the ACTIVE column in **Interfaces**.



- b. Once done, click the **Load** button. Locate and select the TKS file, then press OK



- c. Traktor is now configured to use the DJ Console Rmx.

MIDI Layout for the DJ Console Rmx and Traktor 2.5

NOTE: The terms used are those employed in Traktor

Main Configuration:

A- Deck Gain

B- EQ (Bass/ Mid/ Treble) and EQ Kill

C- Master Balance

D- Deck Tempo - Reset

E- Deck Key Lock

F- Loop:

Buttons 1 / 4: Loop Set/In, Loop Active/Out

Buttons 2 / 5: Loop Length Increase/Decrease

Buttons 3 / 6: Loop Move Backward / Forward

G- Deck Tempo

H- Deck Tempo Bend Down/Up

I- Monitor Cue Deck

J- Deck Load Track

K- Browser List Select Up/Down

L- Deck Tempo - Sync

M- Deck Seek Position

N- Deck Volume

O- Master Volume

P- Deck Cue Set

Q- Deck Cue Play

R- Deck Play/Pause

S- X-Fader



Midi controllers map

