

# Configuring Traktor 3 for the DJ Control MP3 (Windows version)

## 1- Audio configuration in Traktor

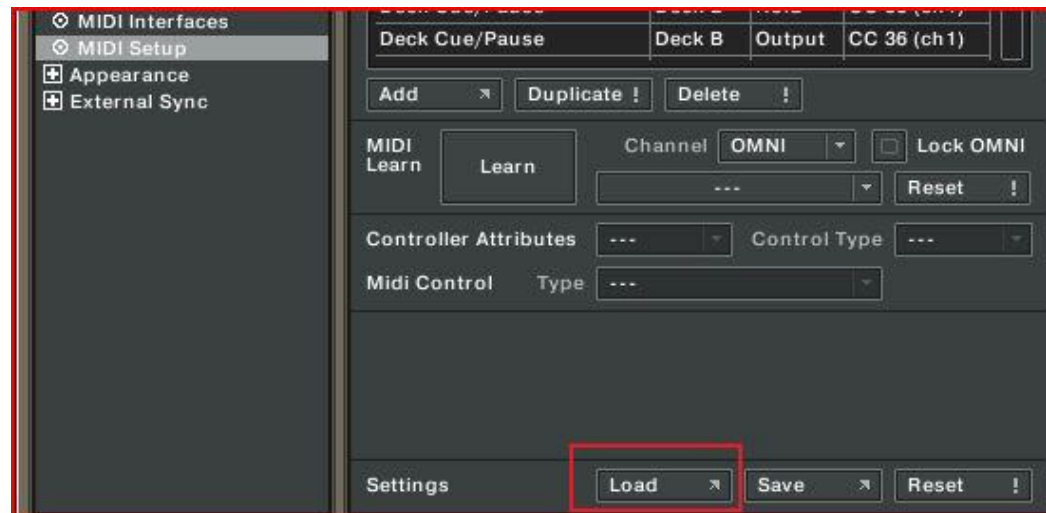
As the DJ Control MP3 is only a MIDI controller, you will need to configure Traktor's audio setup window in order to use your sound card for playback and monitoring on separate stereo channels (Consult the user manual for more details).

## 2- Configuration of the Midi controllers in Traktor

- a. Expand **Hotkey and MIDI setup** and select **MIDI Interface**. Make sure **Hercules DJ Control MP3 MIDI** is marked with an **X** in the ACTIVE column for MIDI IN.



- b. From **MIDI Setup**, click the **Load** button. Locate and select the TKS file, then press OK



- c. Traktor is now configured to use the DJ Control MP3.

## **MIDI Layout for the DJ Control MP3 and Traktor3**

**NOTE:** The terms used are those employed in Traktor

### Main Configuration:

- A- EQ (Bass/ Mid/ Treble)
- B- Deck Tempo
- C- **Secondary Functions (See below)**
- D- Deck Loop – Loop Active/Out
- E- Deck Monitor Cue
- F- Deck Volume
- G- Deck Time Stretch ON
- H- Browser List Select Up/Down
- I- Deck Pitch Bend
- J- Deck Load Selected
- K- Deck load Previous / Next
- L- Deck Seek Position
- M- Deck Tempo - Sync
- N- Deck Cue/Pause
- O- Deck Play/Pause
- P- X-Fader



Secondary functions:

Press and hold the button "1" to access the effects (FX) functions:



A- Master Effect Knob 1

B- Master Effect Knob 3

C- Master Effect button 1

D- Master Effect button 4

E- Master Effect Previous /Next

F- Master Effect Knob 4

Press and hold the button "2" to access additional controls:



A- Deck Gain (A)

B- Deck Gain (B)

C- Browser Tree Select  
Up/Down/Expand/Collapse

D- Monitor Mix

E- Monitor Volume

F- Deck Cue Set (A)

G- Deck Cue Set (B)

Press and hold the button "3" to enable the Scratch function on the jog wheel.



## Midi controllers map

