

Configuring Traktor 3 for the DJ Console (Windows version)

1- Configuration of the Console

- a) From the DJ Console control panel, set the audio mode to **DJ**
- b) Check the box **Enable ASIO Mode**
- c) For **MIDI Input**, select **DJ Console buttons**. This is very important to allow Traktor to use the DJ console as a controller.

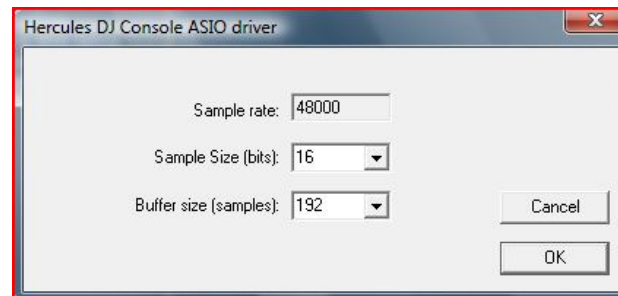


2- Audio configuration in Traktor

- a) From the **FILE** menu, select **AUDIO SETUP**
- b) In **Soundcard**, select **Hercules DJ Console ASIO** as **Audio Device**.



Click on **Control Panel** if you wish to modify the various settings of the ASIO driver.



- c) Under **Output Routing**, set Output 3 & 4 for **Monitor** and Output 1 & 2 for **Master**

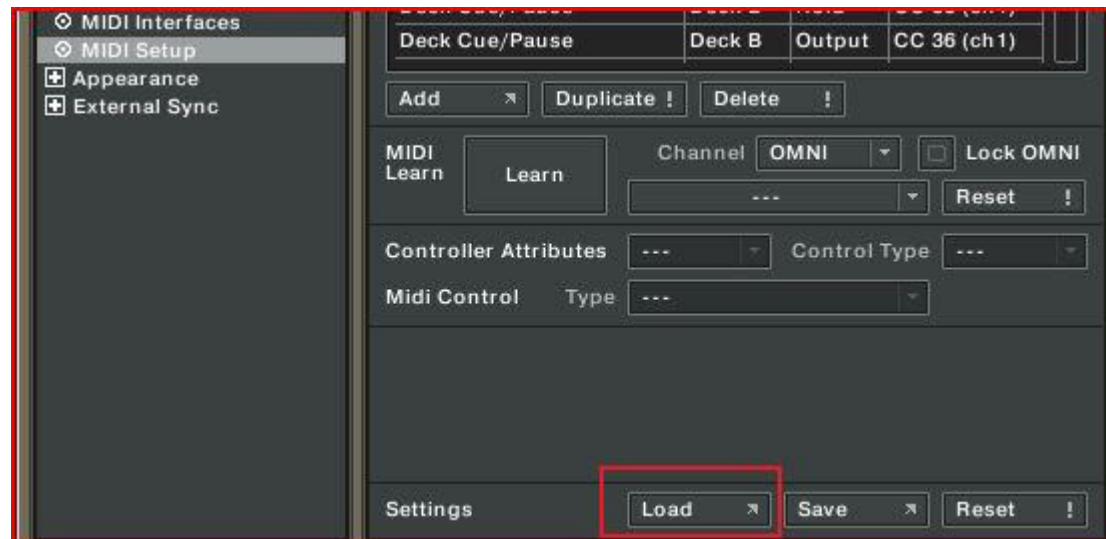


3- Configuration of the Midi controllers in Traktor

- a. Expand **Hotkey and MIDI setup** and select **MIDI Interface**. Make sure **Hercules DJ Console MIDI** is marked with an **X** in the ACTIVE column for both MIDI IN and OUT.



- b. From **MIDI Setup**, click the **Load** button. Locate and select the TKS file, then press OK



- c. Traktor is now configured to use the DJ Console Rmx.

MIDI Layout for the DJ Console and Traktor3

NOTE: The terms used are those employed in Traktor

Main Configuration:

- A- EQ (Bass/ Mid/ Treble)
- B- Deck Tempo
- C- **Secondary Functions (See below)**
- D- Deck Loop – Loop Active/Out
- E- Deck Monitor Cue
- F- Deck Volume
- G- Deck Time Stretch ON
- H- Browser List Select Up/Down
- I- Deck Pitch Bend
- J- Deck Load Selected
- K- Deck load Previous / Next
- L- Deck Seek Position
- M- Deck Tempo - Sync
- N- Deck Cue/Pause
- O- Deck Play/Pause
- P- X-Fader



Secondary functions:

Press and hold the button "1" to access the effects (FX) functions:



A- Master Effect Knob 1

B- Master Effect Knob 3

C- Master Effect button 1

D- Master Effect button 4

E- Master Effect Previous /Next

F- Master Effect Knob 4

Press and hold the button "2" to access additional controls:



A- Deck Gain (A)

B- Deck Gain (B)

C- Browser Tree Select
Up/Down/Expand/Collapse

D- Monitor Mix

E- Monitor Volume

F- Deck Cue Set (A)

G- Deck Cue Set (B)

Press and hold the button "3" to enable the Scratch function on the jog wheel.



Midi controllers map

