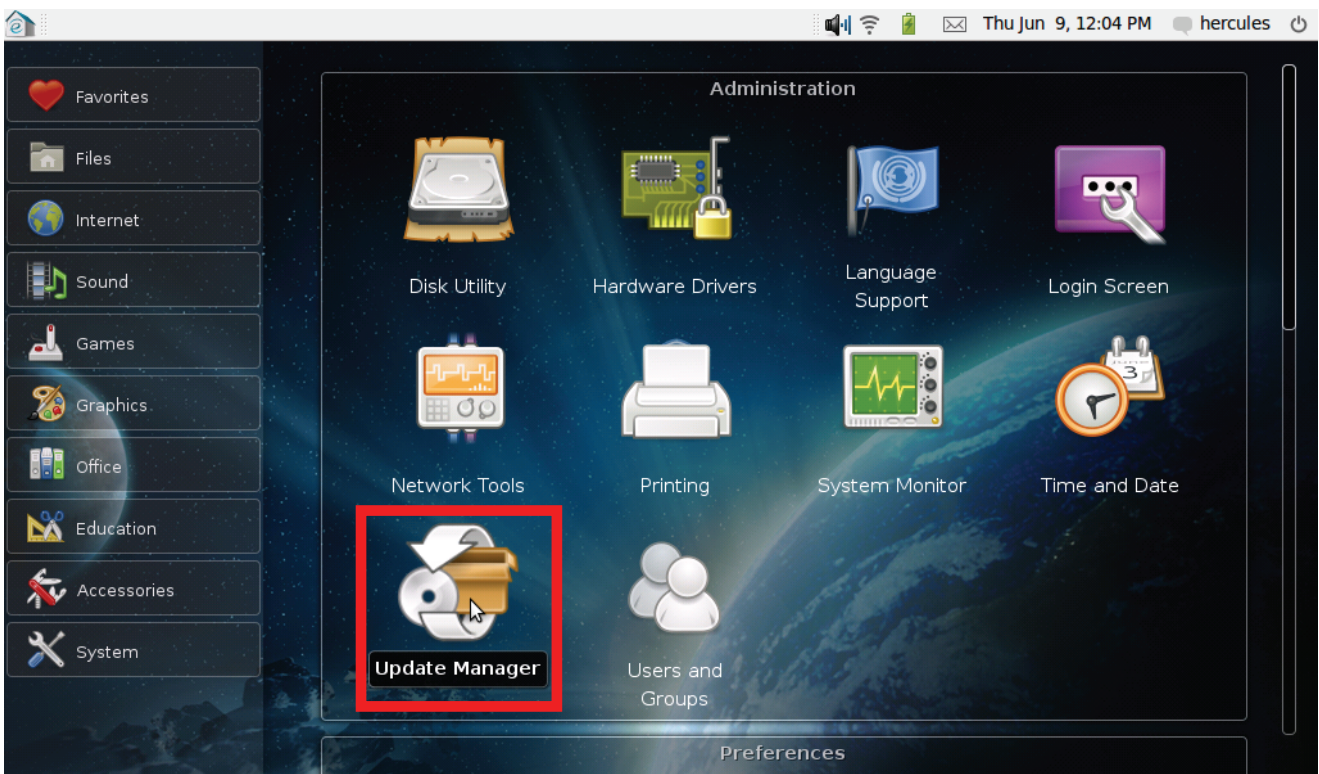


## How to update your system

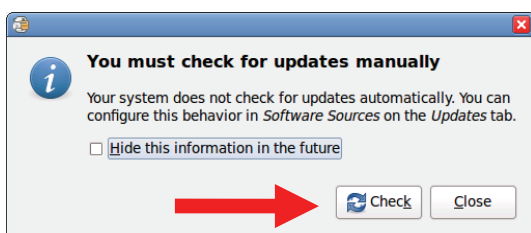
How can I update my eCAFÉ™ Slim HD / eCAFÉ™ EX HD system?

### Solution

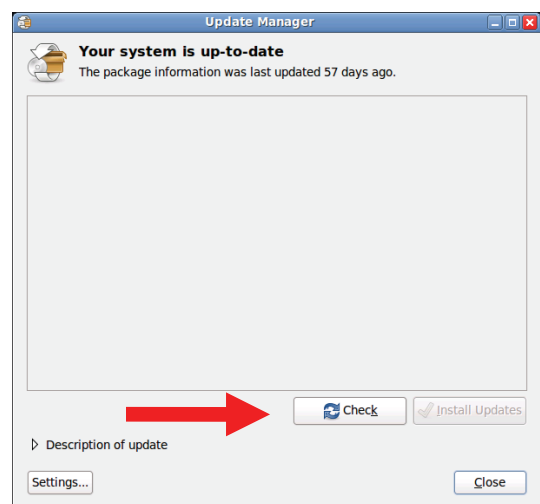
1. Make sure that your eCAFÉ is connected to the Internet (via WiFi or using an Ethernet cable) and plugged into an electrical outlet.
2. Access the “System” section and launch the “Update Manager” application.



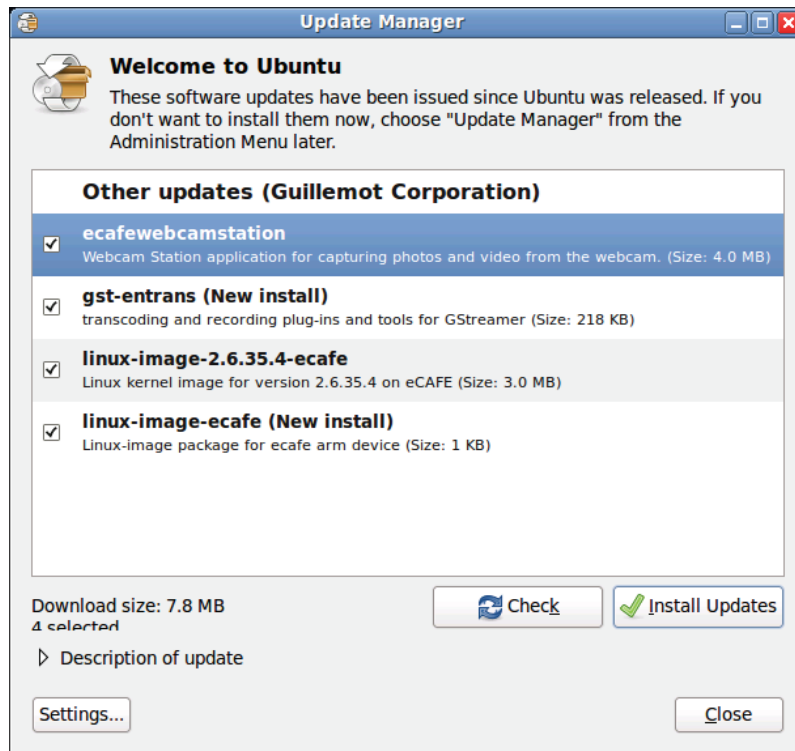
3. Click the “Check” button (in a dialog box or in the main application window):



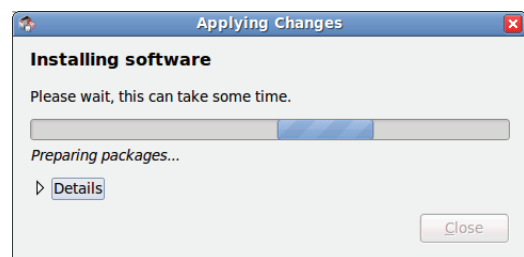
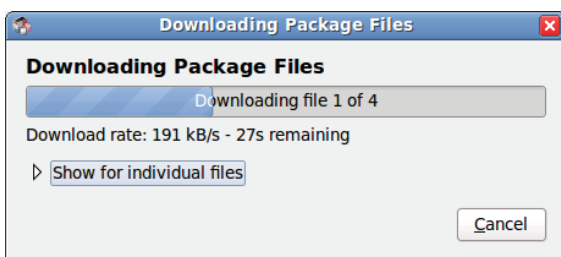
or



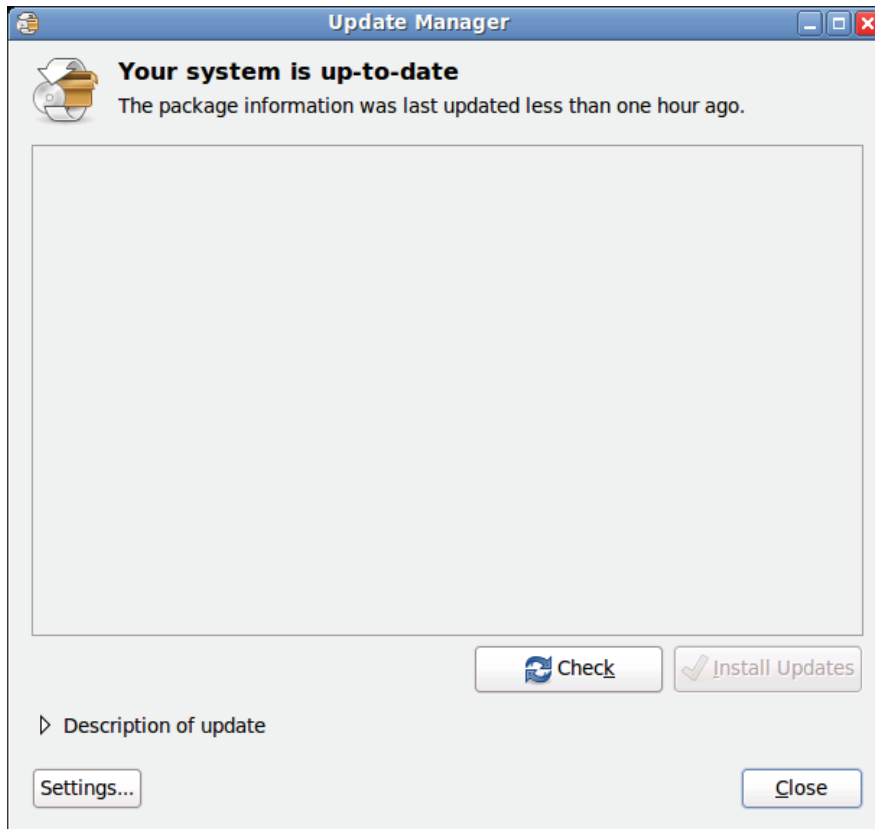
- You will be prompted to enter your password. This is the password that you chose when you started up your eCAFÉ™ for the first time.
- Once you have checked for updates, any available updates will be listed in the Update Manager window:



- Click the "Install updates" button to launch the update installation process (we recommend that you plug your eCAFÉ's power supply into an electrical outlet during this procedure).
- Wait for the updates to download and install:



8. Once the installation is complete, or if no updates are available, the Update Manager application will inform you that your system is up-to-date.



9. After applying the updates, restart your eCAFÉ if prompted to do so by the system.

