

Hercules Muse Pocket configuration for DJUCED (OS X).

This document will explain how to configure your Hercules Muse Pocket USB soundcard so that it can perform properly with DJUCED 18° et 40°.

The following subjects will be covered:

- [Installation](#)
- [OS X configuration](#)
- [Speakers and headphone connections](#)
- [DJUCED 18° & 40° configuration](#)

Before we start, we need to identify your model:



Muse Pocket LT



Muse XL Pocket LT3

INSTALLATION

The **Hercules Muse Pocket LT** and **Hercules Muse XL Pocket LT3** do not require the installation of any specific drivers. Simply connect it to a USB port of your computer, and OS X will automatically recognize and install standard USB Audio drivers that will allow you to use the Muse Pocket with any multimedia applications.

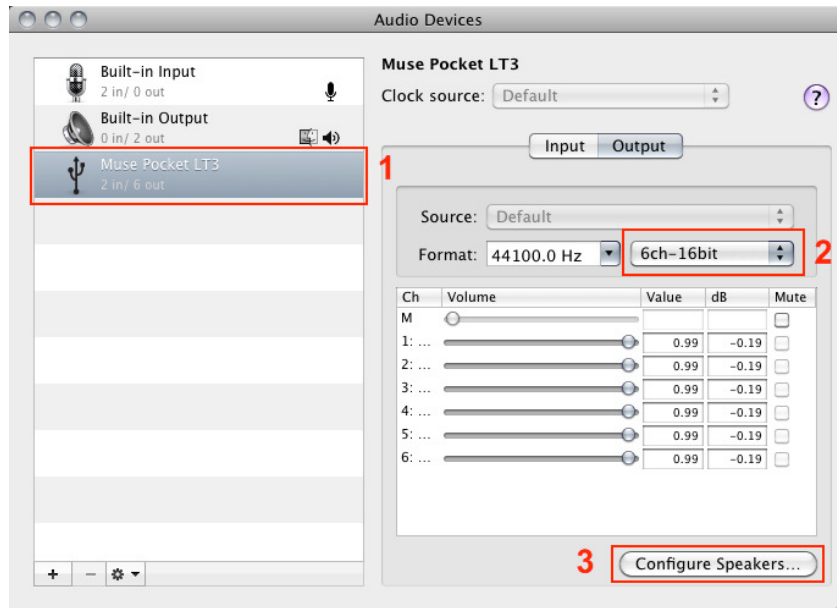
Once your soundcard is correctly installed, it needs to be configured so that all outputs will be accessible in DJUCED. You can do this from **Audio/MIDI Setup**, which can be found in **Applications > Utilities**



OS X configuration

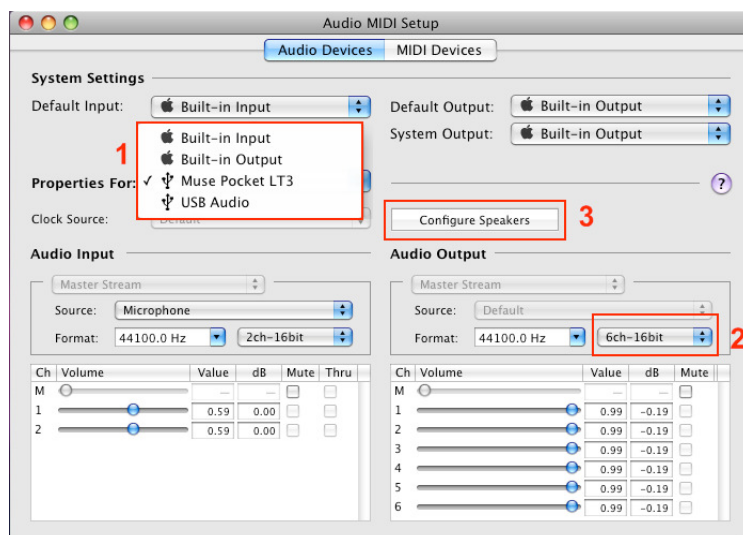
Many devices may be available. The **Muse Pocket LT** will appear as **USB Audio**, while the **Muse Pocket LT3** will appear by name.

OS X 10.10 / 10.9 / 10.8 / 10.7 / 10.6

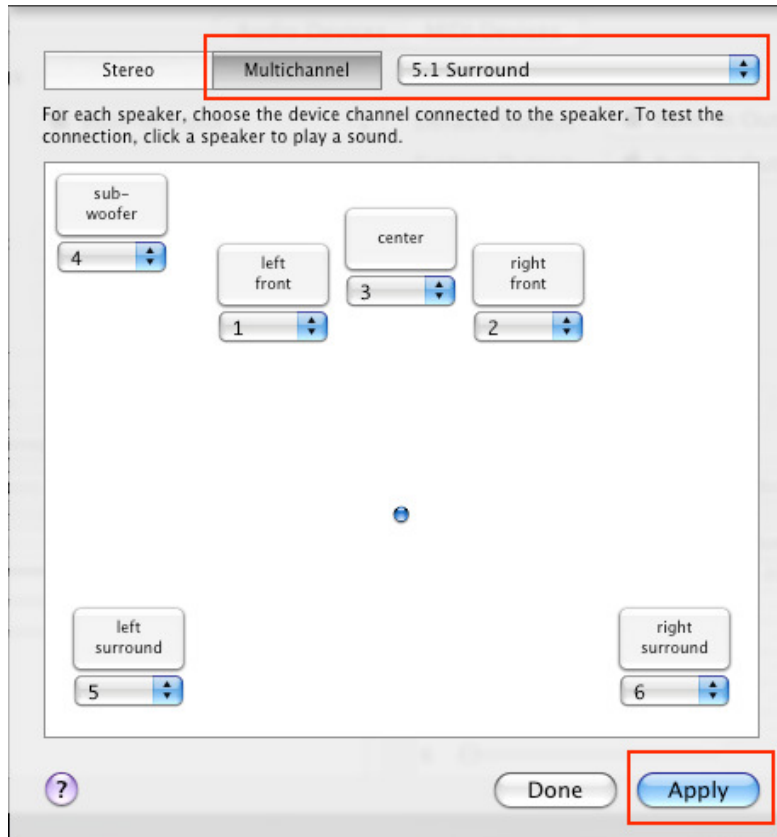


- 1) First, select the soundcard you want to configure.
- 2) Next, under **Audio Output**, insure that **6ch** is selected.
- 3) Then, click **Configure Speakers** to launch the **Speaker Setup** wizard.

OS X 10.5.8



Select **Multichannel**, then **5.1 Surround**.



Finally, click **Apply**.

You can also use this interface to test your speakers by clicking on any of the boxes representing the speakers,



Speakers and headphone connections

Next, proceed to connecting your speakers and headphone to the Muse Pocket.



Muse Pocket LT:

- Connect your speakers to the **Center/Sub** audio output.
- Connect your headphone to the **FRONT** audio Output.

Muse XL Pocket LT3:

- Connect your speakers to the **Center/Sub** audio output.
- Connect your headphone to the **FRONT** audio Output.



Important: DO NOT connect your headphone to the dedicated headphone output, as this will prevent all other outputs from working.

A note regarding 5.1 speakers systems:

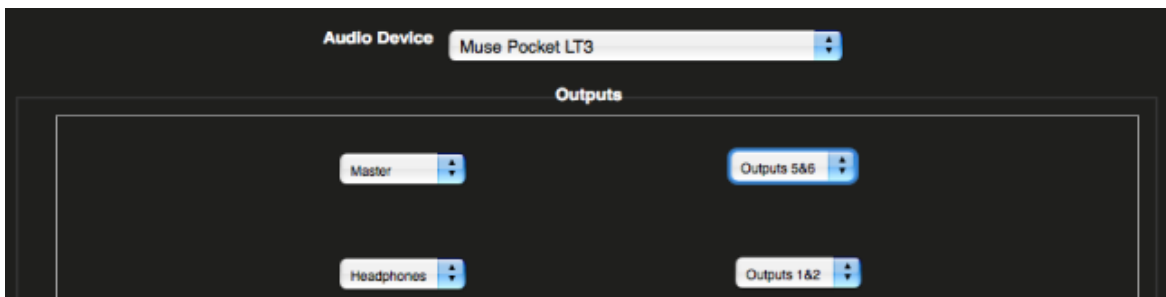
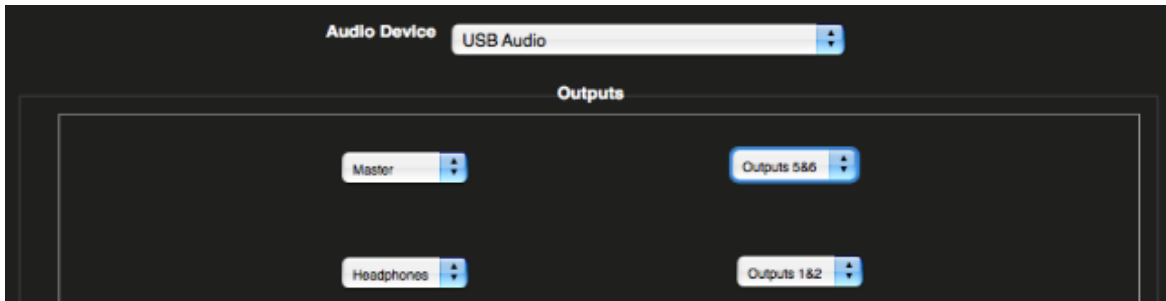
- Only connect the FRONT (often coloured green) connector to the soundcard.
- Your system will probably need to be configured in **SURROUND** mode so that the sound can be heard on all speakers (Consult the speaker's user manual for more details).



DJUCED 18° & 40° configuration

The last remaining step is to configure DJUCED to use your soundcard.

For **DJUCED 18°**, in the **Settings > Audio** menu, the configuration should look like this:



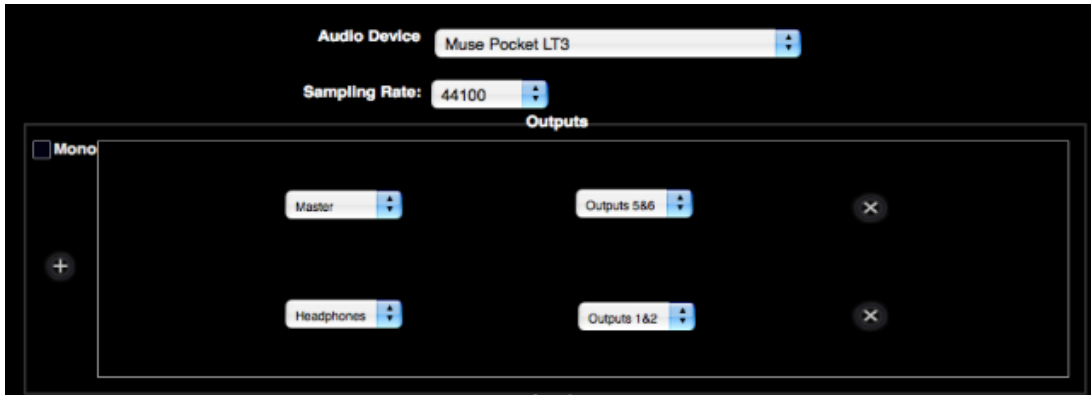
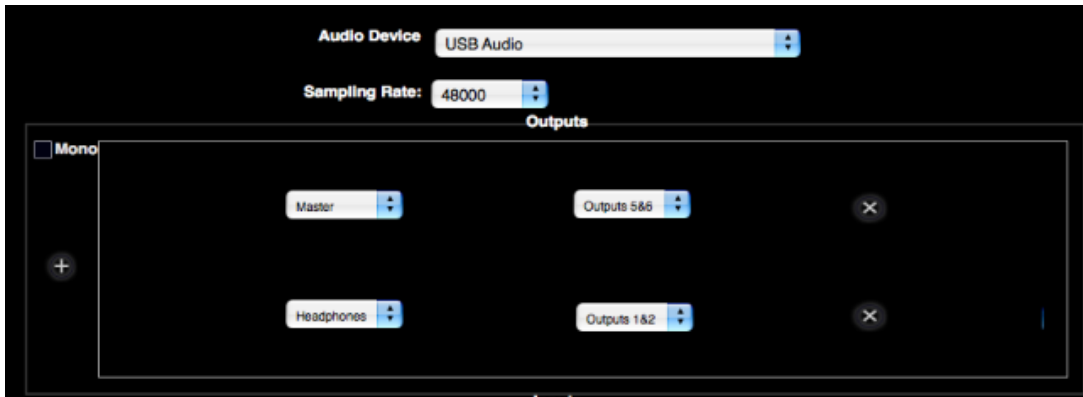
Audio Device: **USB audio** or **Muse Pocket LT3**

Master: **Output 5&6**

Headphone: **Output 1&2**



The process is the same when using **DJUCED 40°**, and the configuration should look like this:



The configuration is now complete. The Hercules Muse Pocket USB soundcard is now ready to be used with DJUCED.

