

How can I verify that the DJControlWAVE is working correctly as a MIDI controller (PC)?

Although it is possible to test the **DJControlWAVE** from within most applications that can use MIDI controller, we'll use a MIDI test program available from the following website:

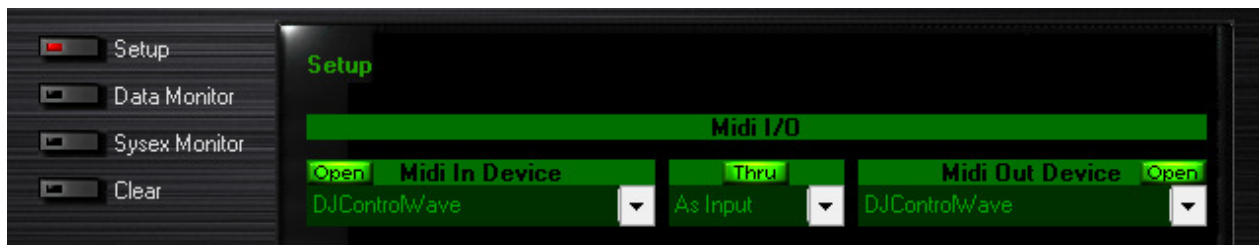
MIDI Monitor

<http://obds.free.fr/midimon/>

NOTE: When used under Windows 8/7/Vista, be sure to run the software as Administrator.

The first thing to do upon launching **MIDI Monitor** is to configure it so the **DJControlWAVE** is used as **MIDI Device**:

- From the Left column, click **SETUP**
- Using the drop down menu for **MIDI In & MIDI Out Device**, select the **DJControlWave**.



By default, the Input and Output should be **Open**. This is necessary for the software to be able to read the incoming data from the DJ Console.

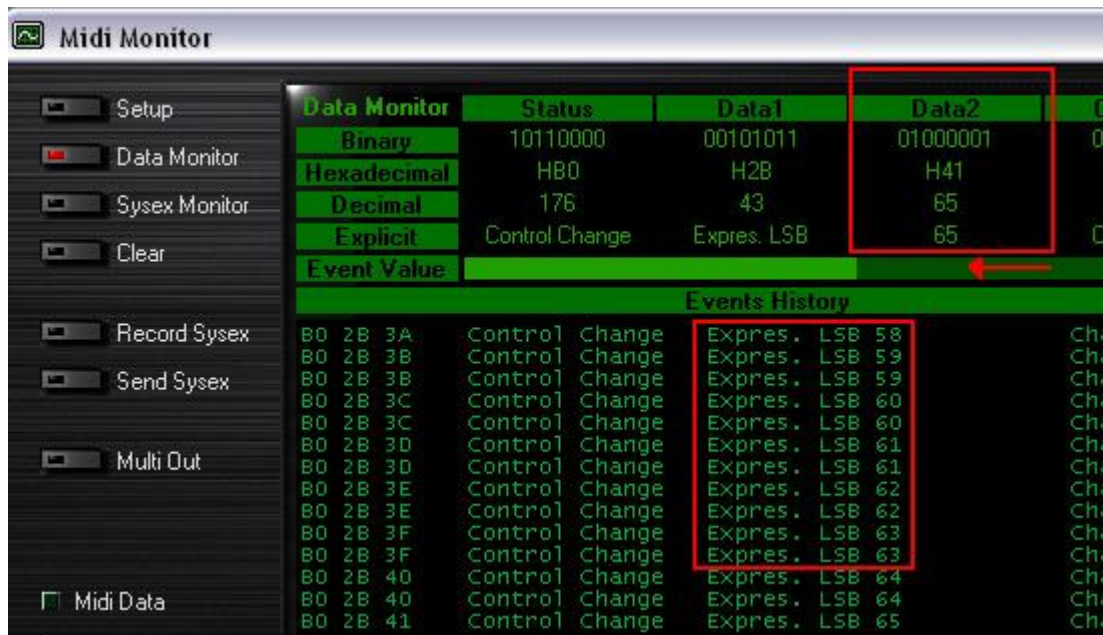
Once done. Click on **Data Monitor**, which will bring you to the test page.



Start by pressing a button on the DJ Control. Under column **Data2**, you will notice a value of **127** (when pressing the button) and **0** (when releasing the button). This is also displayed under **Event History**.



For incremental controls, such as knobs and sliders, you should normally get values **between 0 and 127**, depending on the position of the controller. The **Event Value** should also display the relative position of the control being used according to the value.



This test can also help determine if some of the controls of the DJ Control are not working correctly. For example, if the crossfader is only halfway to his course but already displays its maximum value of 127.